

Claim of Beneficial Use Map

SECTION 28 , 29, T5S, R4W, WM
 YAMHILL COUNTY, OREGON
 WILLAMETTE RIVER BASIN

Transfer T-10977

PREPARED FOR:
 DeRaeve Family, LLC
 Tract known as "Robison Farm"



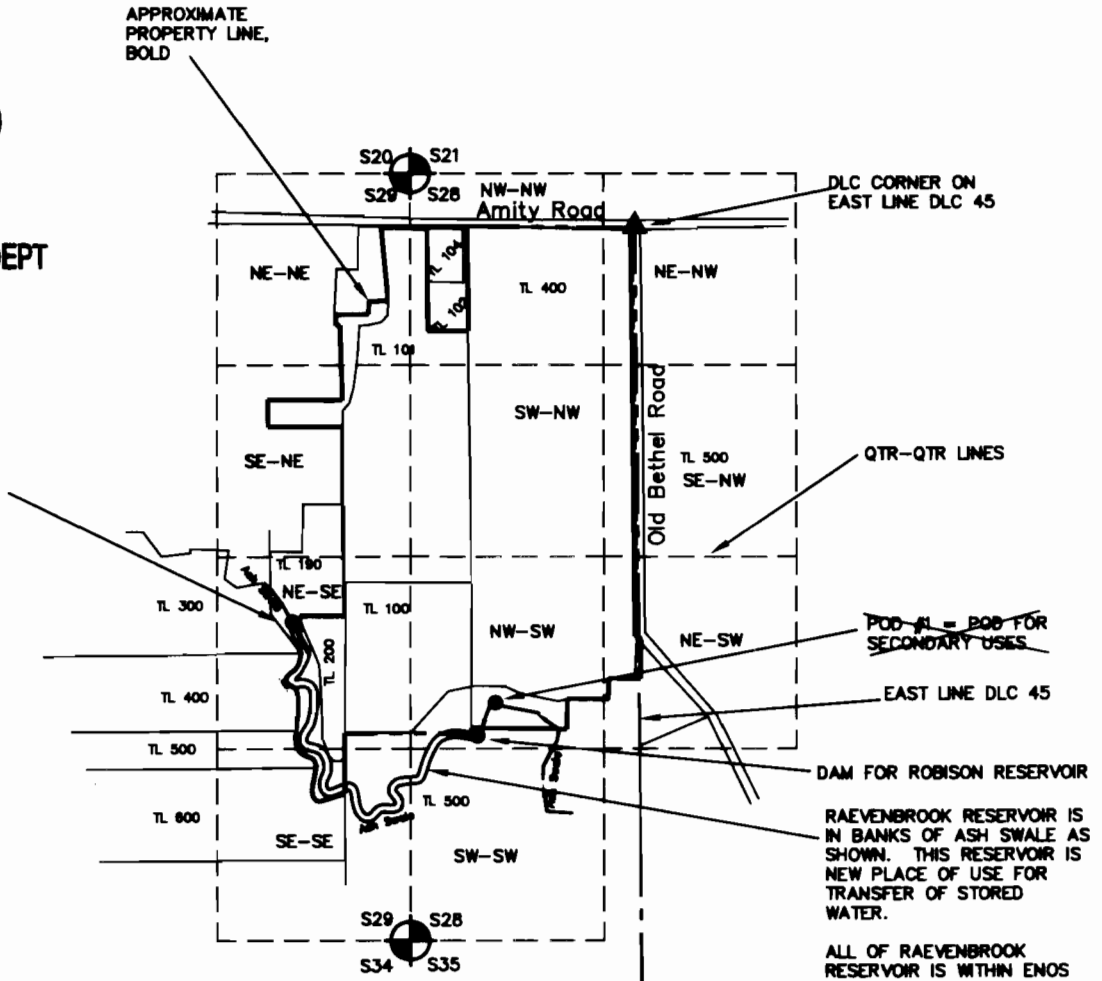
RECEIVED

MAR 19 2012

WATER RESOURCES DEPT
 SALEM, OREGON

POD #2 = DAM FOR
 RAEVENBROOK RESERVOIR. AND
 ADDITIONAL POD FOR
 SECONDARY USES.

THE STAFF GAUGE IS MOUNTED
 ON THE WEST SIDE OF THE
 BRACKET FOR THE VALVE BEING
 EAST OF THE FLASH BOARDS
 ON THE DAM.



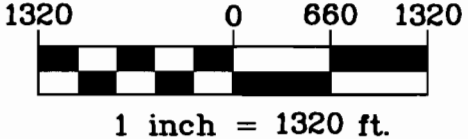
SECTION CORNER AND MAP SCALE POINT
 DLC CORNER

 POD; COORDINATES AS FOLLOWS:
~~POD #1 1846' N, 580' E.~~
 DAM/POD #2 2190 N, 810 W;
 OF THE SW CORNER OF S28

NOTE: POD COORDINATES AND IRRIGATION ACRES VARY FROM PRIOR MAPS. THIS IS BECAUSE OF BETTER AERIAL PHOTOS, MAPPING ACCURACY, AND CHANGES IN OWNERSHIP.



Project: 306-2-022
 Drawing: 3062022J.dwg
 By: EAU
 Checked by: EAU
 Date: 15MAR2012



MAP BASE:
 YAMHILL COUNTY TAX MAPS 28&29 T5S,
 R4W AND AUG 2004 GOOGLE AERIAL
 PHOTO

THIS MAP WAS PREPARED FOR THE PURPOSE OF IDENTIFYING THE LOCATION OF A WATER RIGHT ONLY AND IS NOT INTENDED TO PROVIDE LEGAL DIMENSIONS OR LOCATION OF PROPERTY OWNERSHIP LINES.