

RECEIVED

SEP 10 1991

RECEIVED

FEB - 1 1991

WATER RESOURCES DEPT.
SALEM, OREGON

SECTIONS 9 AND 16
Twp. 24 S., R. 37 E., W.M.
Malheur County, Oregon
Tax Lot 700

DISCLAIMER

I, ALBERT GASCHLER, HEREBY CERTIFY: THAT THIS MAP WAS MADE TO BE A PART OF THE APPLICATION FOR A PERMIT TO TRANSFER SURFACE WATER. SECTIONAL LINES SHOWN ARE APPROXIMATE AND THIS MAP IS NOT INTENDED FOR ANY OTHER USE AND DOES NOT GUARANTEE LAND OWNERSHIP.

T-6427

NOTES :

LANDS IRRIGABLE UNDER EXISTING PERMITS :
In Twp. 24 S., R. 37 E., W.M.

Sec. 9 :

- 1). NE1/4NW1/4: 1.2AC.: EXIST. 3.5, TRANS. 2.3
- 2). SE1/4NW1/4: 22.5AC.: EXIST. 22.5, TRANS. NONE
- 3). NE1/4SW1/4: 34.0AC.: EXIST. 37.3, TRANS. 3.3
- 4). NW1/4SW1/4: 14.0AC.: EXIST. 15.4, TRANS. 1.4
- 5). SE1/4SW1/4: 14.8AC.: EXIST. 32.7, TRANS. 17.9
- 6). SW1/4SW1/4: 0.0AC.: EXIST. 5.6, TRANS. 5.6
- 7). NW1/4SE1/4: 9.0AC.: EXIST. 9.0, TRANS. NONE
- 8). SW1/4SE1/4: 9.7AC.: EXIST. 22.5, TRANS. 12.8

Sec. 16 :

- 1). NE1/4NW1/4: 5.5AC.: EXIST. 5.5, TRANS. NONE
- 2). NW1/4NE1/4: 21.0AC.: EXIST. 21.0, TRANS. NONE
- 3). SE1/4NW1/4: 19.0AC.: EXIST. 19.0, TRANS. NONE
- 4). NE1/4SW1/4: 1.5AC.: EXIST. 1.5, TRANS. NONE

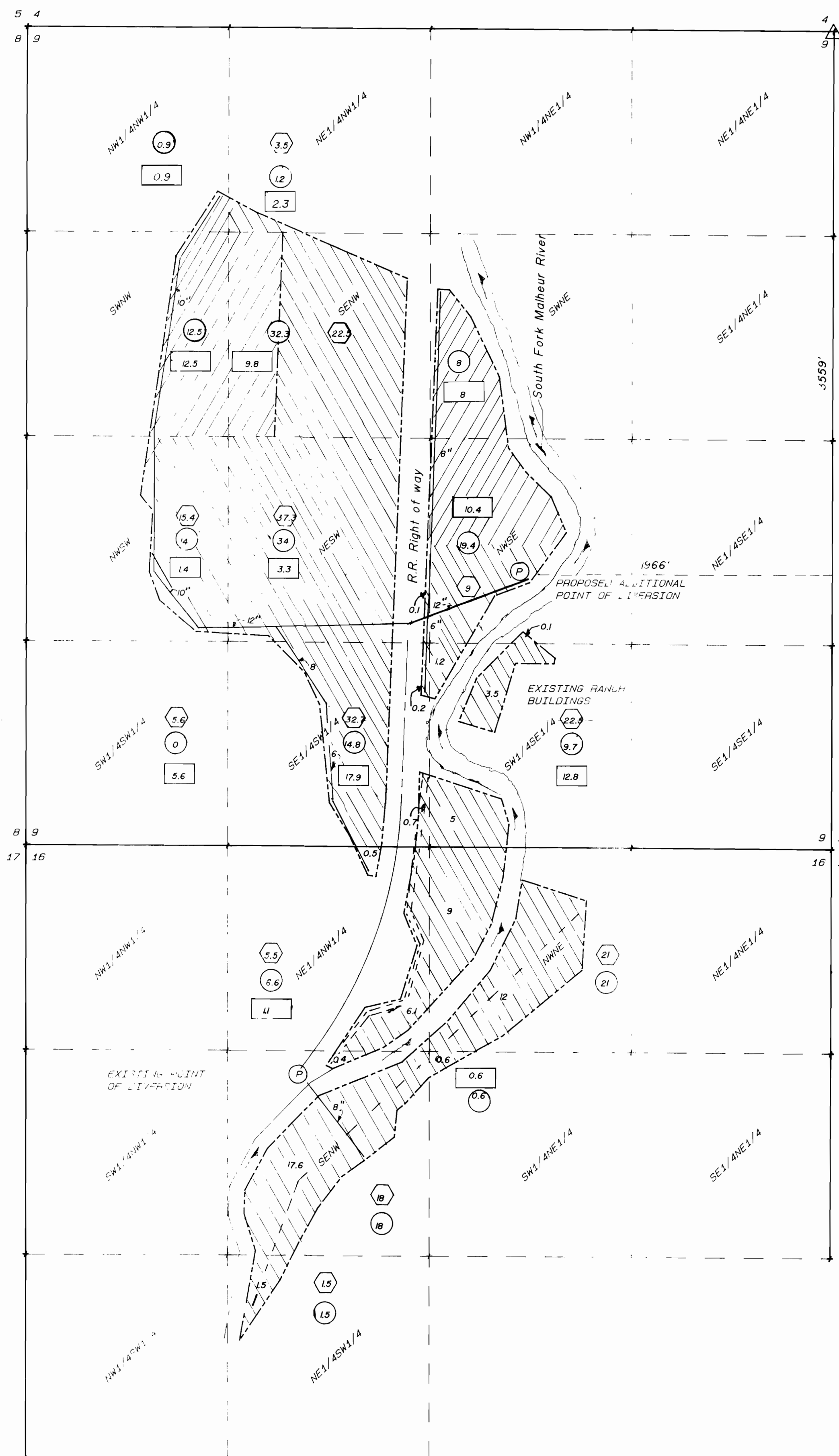
LANDS IRRIGABLE UNDER TRANSFERRED RIGHTS :

Sec. 9 :

- 1). NW1/4NW1/4: 0.9 ACRES
- 2). SE1/4NW1/4: 9.8 ACRES
- 3). SW1/4NW1/4: 12.5 ACRES
- 4). SW1/4NE1/4: 8.0 ACRES
- 5). NW1/4SE1/4: 10.4 ACRES

Sec. 16 :

- 1). NE1/4NW1/4: 1.1 ACRES
- 2). SW1/4NE1/4: 0.6 ACRES



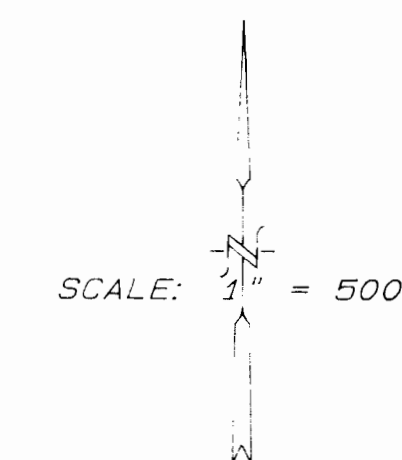
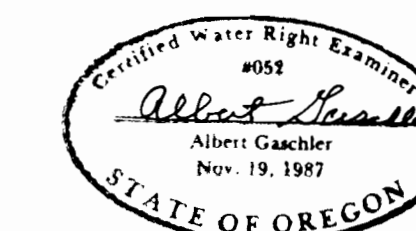
APPLICATION No.:

PERMIT No.:

EXISTING PERMITS : Vol. 8, Pg. 228 & Vol. 7, Pg. 6973

LEGEND

- GOVERNMENT CORNER
- EXISTING WATER RIGHT
- SUPPLEMENTAL RIGHT
- CONC. LINED DITCH
- EARTH DITCH
- PIPE LINE
- SPRINKLER LINE
- PUMP
- WEIR BOX
- NEW PRIMARY RIGHT
- TRANSFERRED EXIST. RIGHT
- EXIST. WATER RIGHTS ACRES.
- PROPOSED ACRES TOTAL
- EXIST. ACRES TRANSFERRED OUT
- EXIST. ACERS TRANSFERRED IN



WATER RIGHTS EXAMINERS MAP
FOR : J.B. RANCHES

GASCHLER & CUMMINGS
P. O. BOX 412 / 786 SUNSET DR., 889-2101, ONTARIO, OREGON

CHECKED BY: AG	DRAWN BY: DKC	APPROVED BY: AG
DATE: 7/90	DRAWING No.: C-557	REVISED:
SHEET: 1 OF 1	JOB No.: WD-2690	BK. 0-3 PG. 12