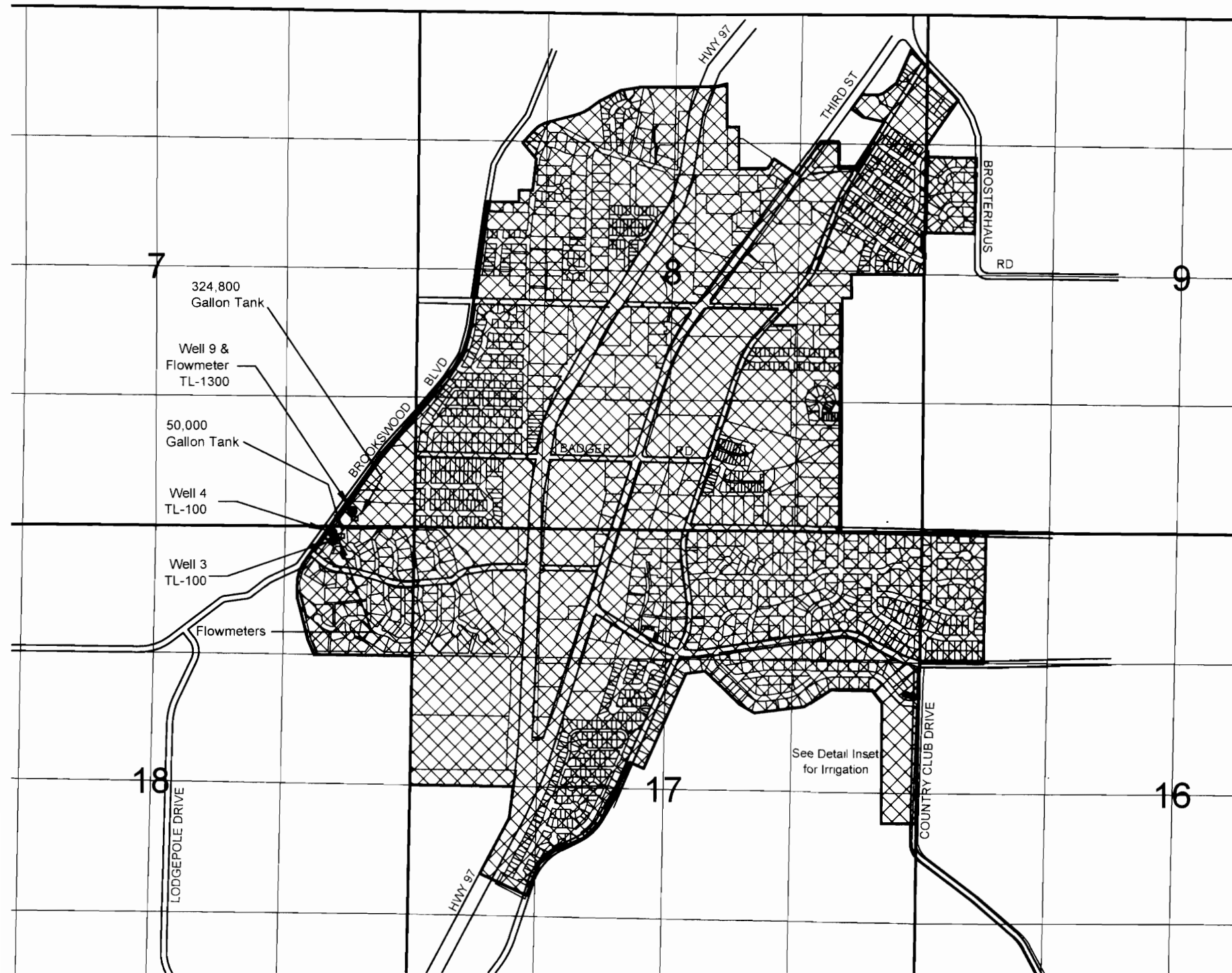


T18S, R12E, W.M.  
 Transfer T-10979  
 Roats Water System, Inc.  
 Deschutes County, OR  
 Claim of Beneficial Use Map



Scale: 1 inch = 1320 feet  
 0 660' 1320' 1980' 2640'

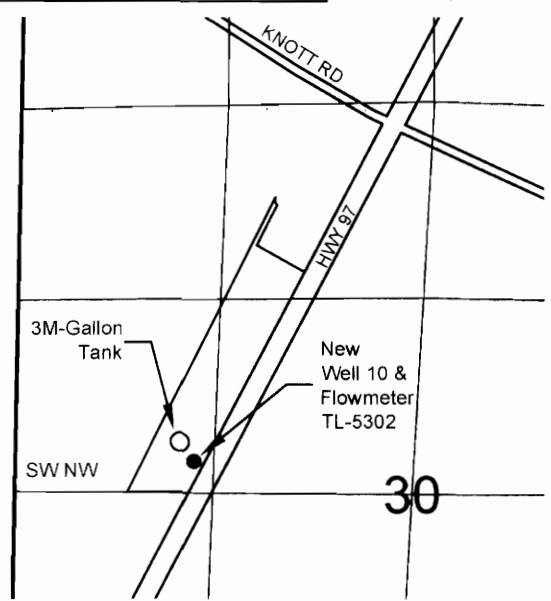
Explanation

- Cancelled Certificates
- Certificate 86042  
Priority Date: March 23, 1961  
Group Domestic
- Supplemental Irrigation (13.0 Acres)  
See Detail Inset
- Certificate 86043  
Priority Date: December 22, 1965  
Group Domestic
- Primary Irrigation (5.60 Acres)  
See Detail Inset
- - Point of Appropriation (POA)

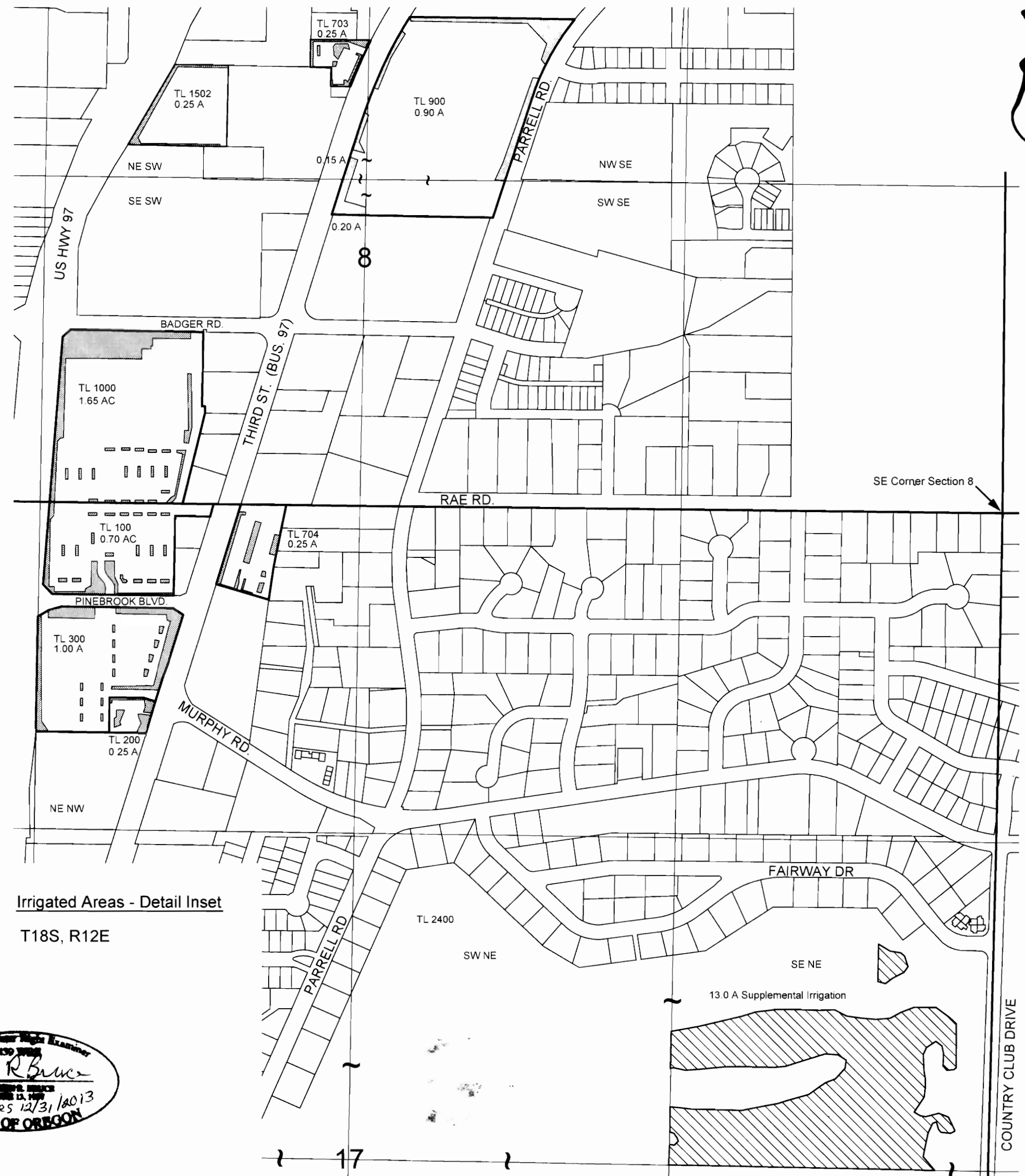
Well 3 located 140 feet south and 820 feet west from the NW corner of Section 17.  
 Well 4 located 55 feet south and 835 feet west from the NW corner of Section 17  
 Well 9 located 160 feet north and 630 west from the NW corner of Section 17  
 New Well 10 located 2445 feet south and 1200 feet east from the NW corner of Section 30  
 Site inspection conducted July 19 & 20 and November 21 & 22, 2011



New Well 10 Location Inset T18S, R12E

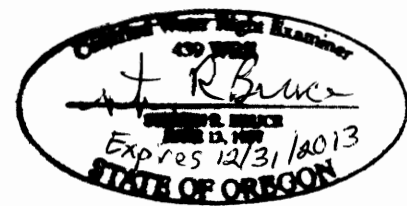


Scale: 1 inch = 1320 feet  
 0 660' 1320' 1980' 2640'



Irrigated Areas - Detail Inset  
 T18S, R12E

Scale: 1 inch = 400 feet  
 0 200' 400' 600' 800'



COBU MAP # 0662

December 13, 2011

THIS MAP IS NOT INTENDED TO  
 PROVIDE LEGAL DIMENSIONS OR  
 LOCATIONS OF PROPERTY  
 OWNERSHIP LINES.

**SKOOKUM**  
 WATER ASSOCIATES INC  
 P.O. Box 80174  
 Portland, OR 97280  
 (503) 319-8926

Figure 1

0662