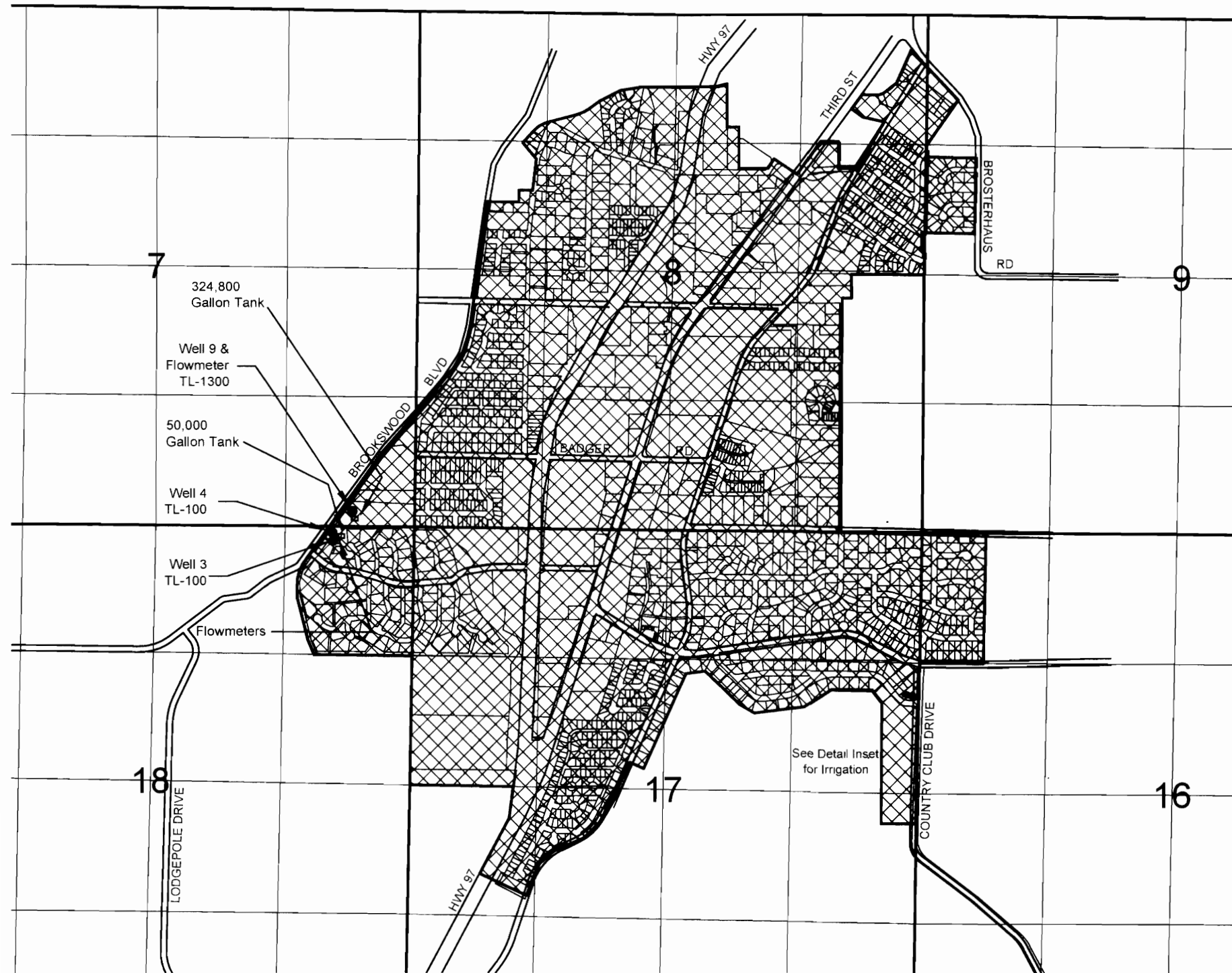


T18S, R12E, W.M.
 Transfer T-10979
 Roats Water System, Inc.
 Deschutes County, OR
 Claim of Beneficial Use Map



0 660' 1320' 1980' 2640'
 Scale: 1 inch = 1320 feet
Group Domestic Use

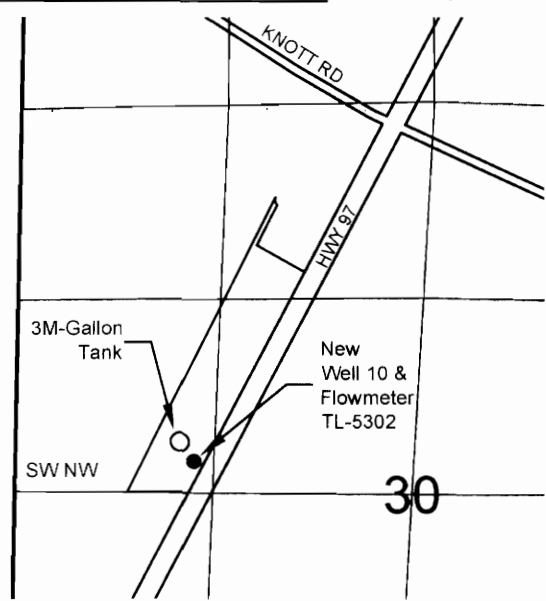
Explanation:

- Cancelled Certificates
- Certificate 86042
 Priority Date: March 23, 1961
 Group Domestic
- Supplemental Irrigation (13.0 Acres)
 See Detail Inset
- Certificate 86043
 Priority Date: December 22, 1965
 Group Domestic
- Primary Irrigation (5.60 Acres)
 See Detail Inset

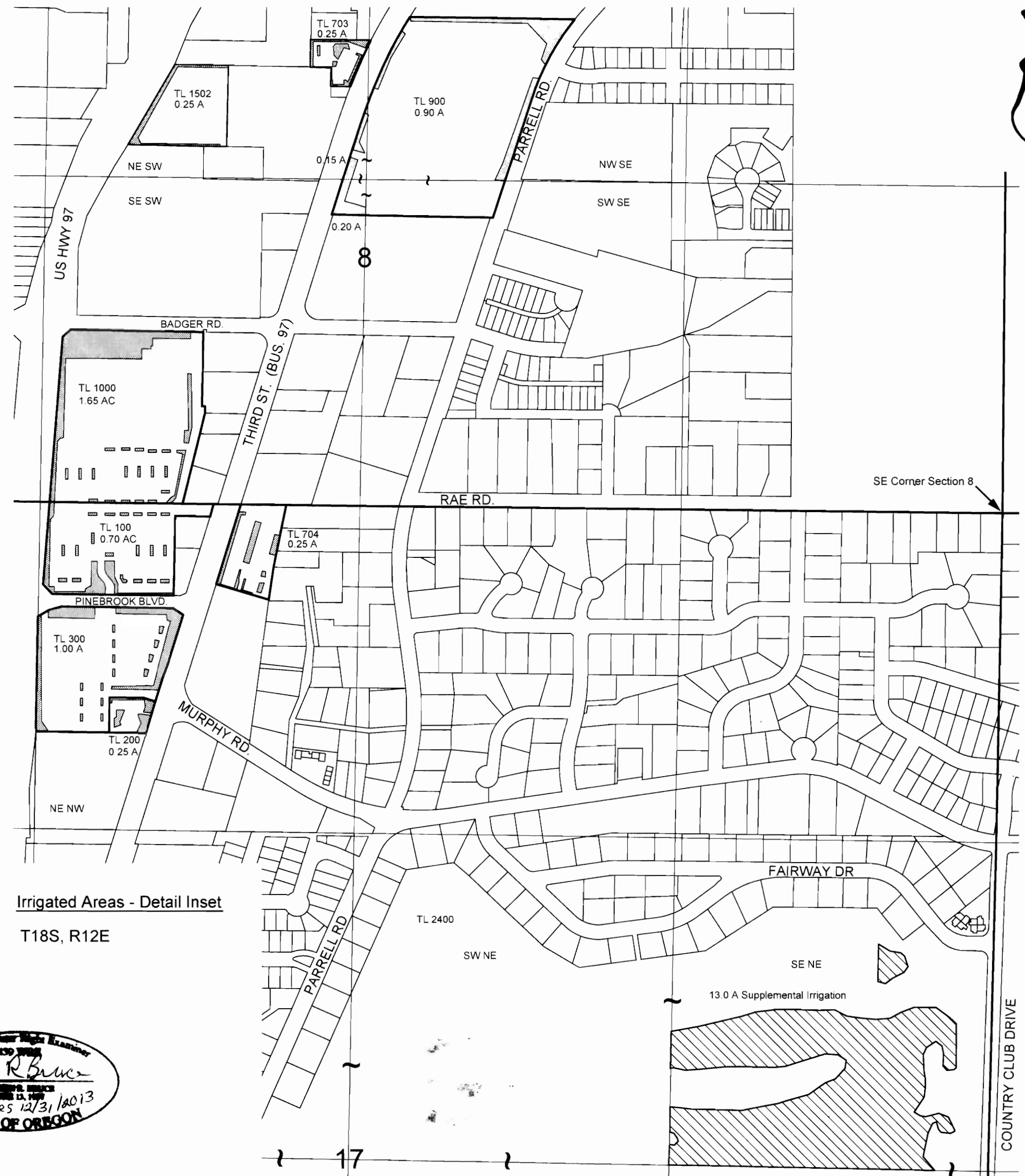
- - Point of Appropriation (POA)
- Well 3 located 140 feet south and 820 feet west from the NW corner of Section 17.
- Well 4 located 55 feet south and 835 feet west from the NW corner of Section 17
- Well 9 located 160 feet north and 630 west from the NW corner of Section 17
- New Well 10 located 2445 feet south and 1200 feet east from the NW corner of Section 30
- Site inspection conducted July 19 & 20 and November 21 & 22, 2011



New Well 10 Location Inset T18S, R12E

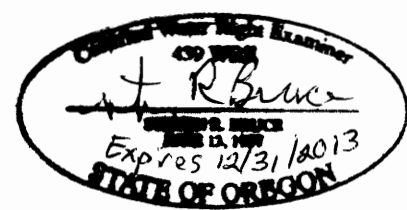


0 660' 1320' 1980' 2640'
 Scale: 1 inch = 1320 feet



Irrigated Areas - Detail Inset T18S, R12E

0 200' 400' 600' 800'
 Scale: 1 inch = 400 feet



COBU MAP # 0662

December 13, 2011
 THIS MAP IS NOT INTENDED TO
 PROVIDE LEGAL DIMENSIONS OR
 LOCATIONS OF PROPERTY
 OWNERSHIP LINES.

SKOOKUM
 WATER ASSOCIATES INC
 P.O. Box 80174
 Portland, OR 97280
 (503) 319-8926

Figure 1

0662