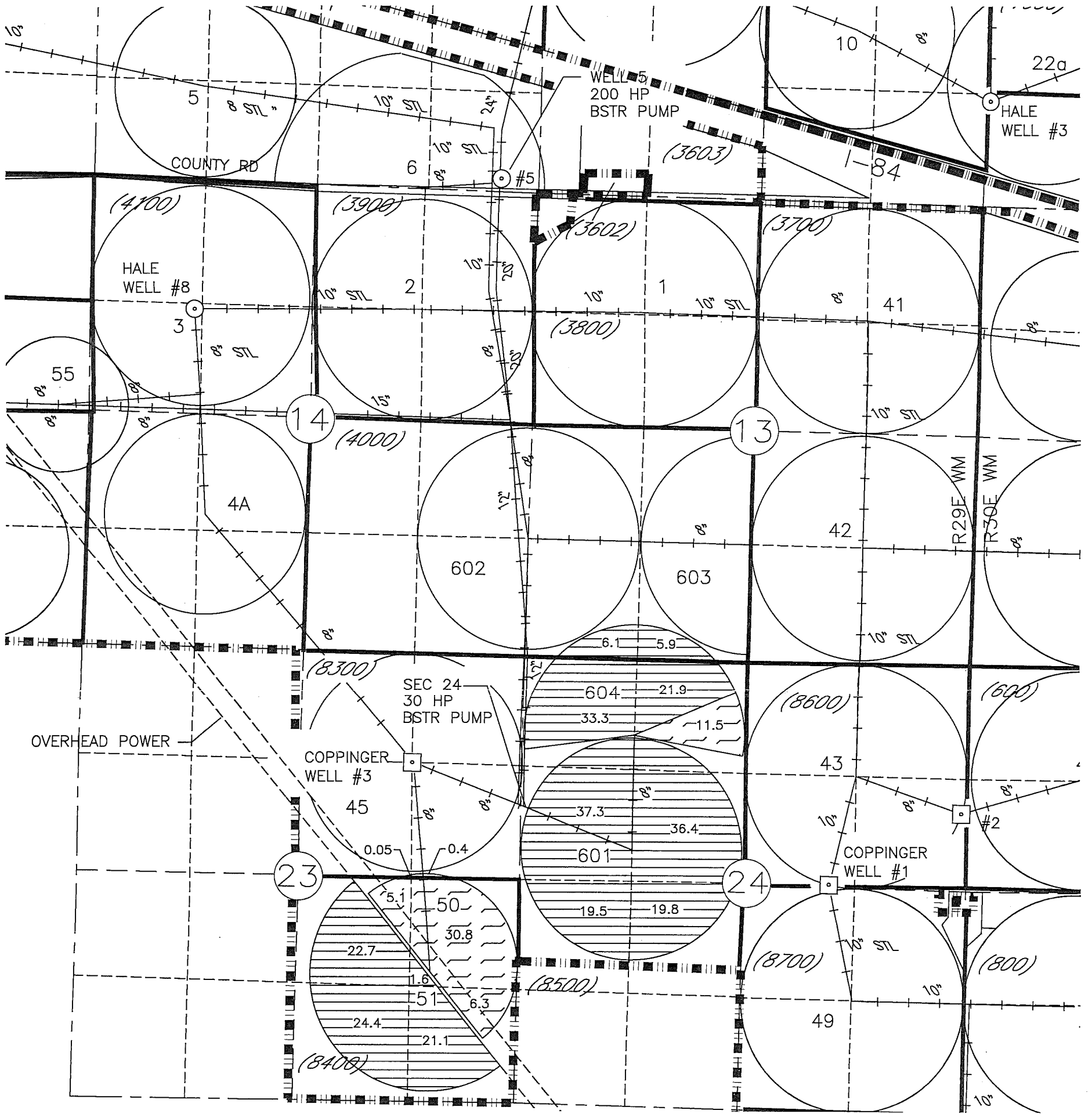


RECEIVED

APR 04 2012

WATER RESOURCES DEPT  
SALEM, OREGON

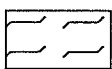
COBU MAP FOR TRANSFER T-11149  
IN THE NAME OF HALE FARMS, LLC  
SEC 13, 23, & 24, T3N, R29E, W.M.  
AND SEC 6, T3N, R30E, W.M.  
UMATILLA COUNTY  
SHEET 1 OF 2



LEGEND - IRRIGATED ACREAGE



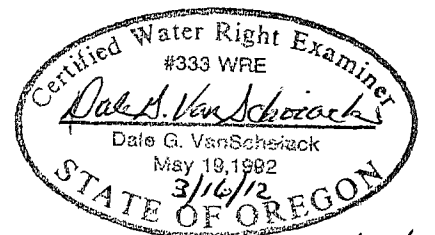
250.0 AC FORMER RCL 6/29/12  
CERT 86679



120.45 AC FORMER RCL 6/29/12  
CERT 86680

POINTS OF APPROPRIATION and LOCATION OF FLOW METERS

- HALE WELL #3 1420'S + 40'E FROM W1/4 COR, SEC 7, T3N, R30E, W.M.
- HALE WELL #8 1350'S + 50'W FROM NE COR NW 1/4 NW 1/4  
SEC 14, T3N, R29E, W.M.
- COPPINGER WELL #1 20'N + 1490'W FROM E1/4 COR, SEC 24, T3N, R29E, W.M.
- COPPINGER WELL #3 3960'N + 1320'W FROM SE COR, SEC 23, T3N, R29E, W.M.



Renewal 6/30/12



SCALE IN FEET

NOTE:  
THE PURPOSE OF THIS MAP IS TO IDENTIFY THE APPROXIMATE LOCATION OF THE WATER RIGHT. IT IS NOT INTENDED TO PROVIDE INFORMATION RELATIVE TO THE LOCATION OF PROPERTY OWNERSHIP BOUNDARY LINES. PIPE LOCATIONS AND SIZES WHERE SHOWN WERE PROVIDED BY FARM OPERATIONAL PERSONNEL AND ARE APPROXIMATE LOCATIONS AND SIZES.



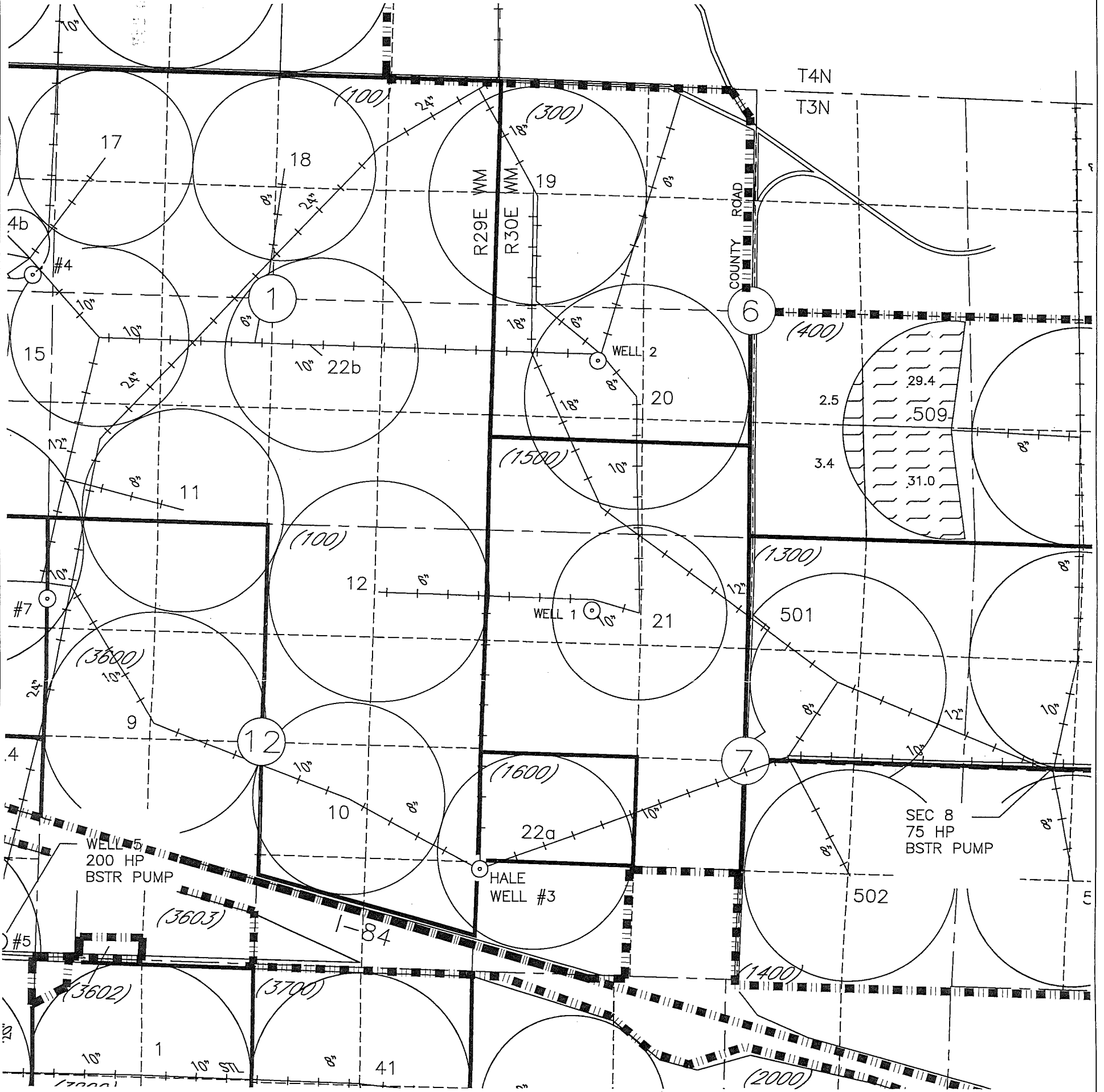
Engineers • Surveyors • Planners  
2319 W. CLEARWATER AVE., STE. 231  
KENNEWICK, WA 98526 (509) 783-2144

RECEIVED

APR 04 2012

WATER RESOURCES DEPT  
SALEM, OREGON

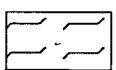
COBU MAP FOR TRANSFER T-11149  
IN THE NAME OF HALE FARMS, LLC  
SEC 13, 23, & 24, T3N, R29E, W.M.  
AND SEC 6, T3N, R30E, W.M.  
UMATILLA COUNTY  
SHEET 2 OF 2



LEGEND - IRRIGATED ACREAGE



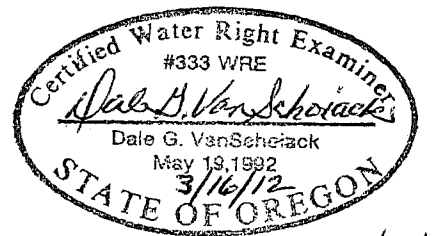
250.0 AC FORMER RCK 6/29/12  
CERT 86679



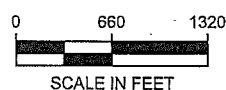
120.45 AC FORMER RCK 6/29/12  
CERT 86680

POINTS OF APPROPRIATION and LOCATION OF FLOW METERS

- HALE WELL #3 ○ 1420'S + 40'E FROM W1/4 COR, SEC 7, T3N, R30E, W.M.
- HALE WELL #8 ○ 1350'S + 50'W FROM NE COR NW 1/4 NW 1/4  
SEC 14, T3N, R29E, W.M.
- COPPINGER WELL #1 ■ 20'N + 1490'W FROM E1/4 COR, SEC 24, T3N, R29E, W.M.
- COPPINGER WELL #3 ■ 3960'N + 1320'W FROM SE COR, SEC 23, T3N, R29E, W.M.



Renew 6/30/12



SCALE IN FEET

NOTE:  
THE PURPOSE OF THIS MAP IS TO IDENTIFY THE APPROXIMATE LOCATION OF THE WATER RIGHT. IT IS NOT INTENDED TO PROVIDE INFORMATION RELATIVE TO THE LOCATION OF PROPERTY OWNERSHIP BOUNDARY LINES. PIPE LOCATIONS AND SIZES WHERE SHOWN WERE PROVIDED BY FARM OPERATIONAL PERSONNEL AND ARE APPROXIMATE LOCATIONS AND SIZES.



2819 W. CLEARWATER AVE., STE. 201  
KENNEWICK, WA 98566 (509) 783-2144