

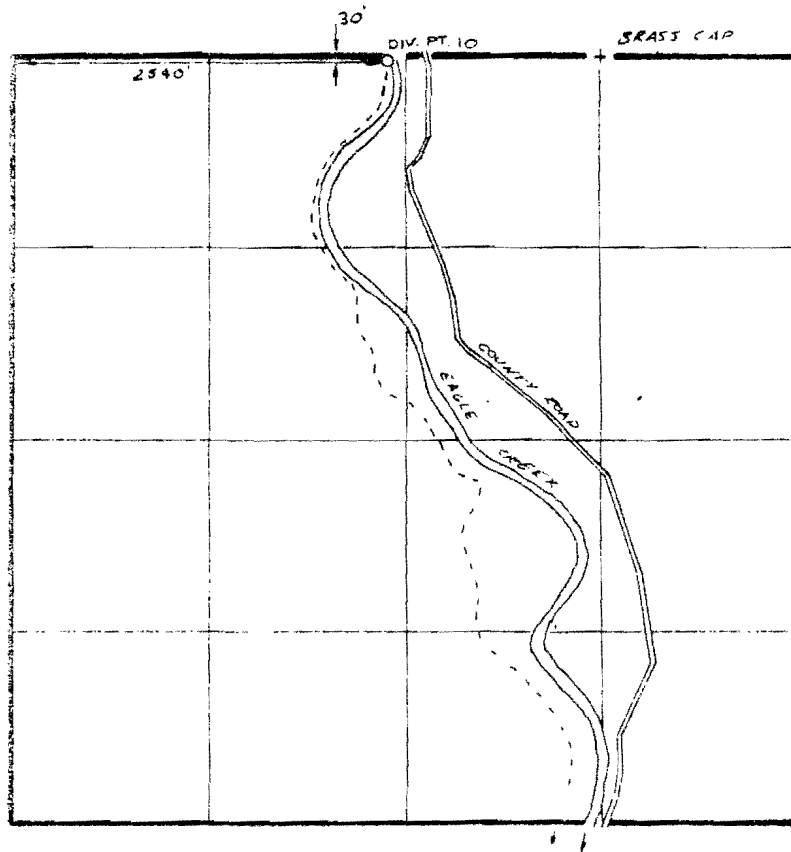
RECEIVED
JUL 23 1980
WATER RESOURCES DEPT
SALEM, OREGON

RECEIVED
JUN 13 1980
WATER RESOURCES DEPT
SALEM, OREGON

JAN 26 1983
WATER RESOURCES DEPT
SALEM, OREGON

T 8S R 45E W.M.

SECTION 20



DRY GULCH DITCH