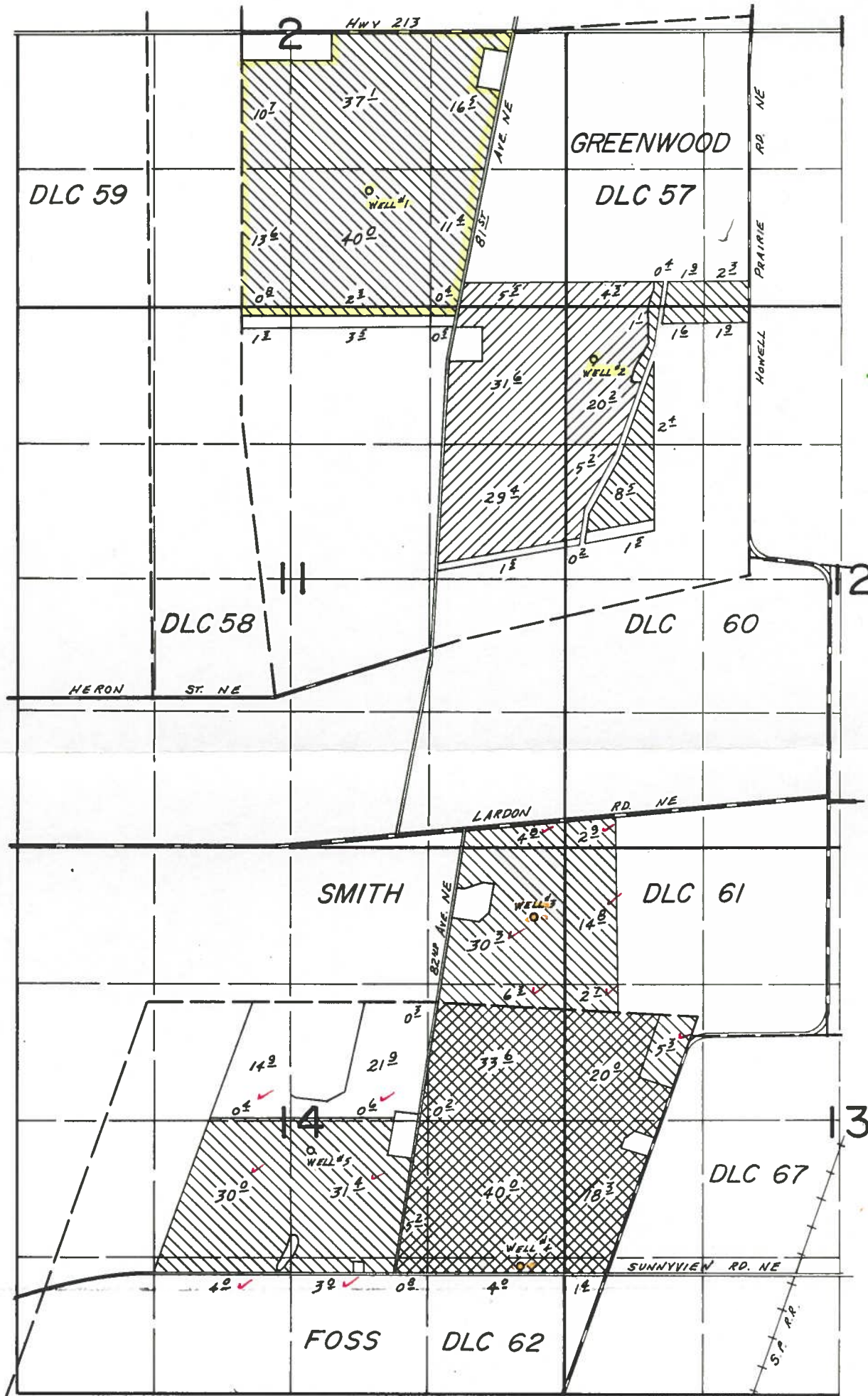





T. 7S., R. 2W., W.M.



WELLS LOCATED: No.1, 1540'S. & 1230'E. FROM NW CORNER OF GREENWOOD DLC 57.
 No.2, 2110'N. & 1480'W. FROM SE CORNER OF GREENWOOD DLC 57.
 No.3, 1170'S. & 2840'W. FROM NE CORNER OF SMITH DLC 61.
 No.4, 2420'S. & 1700'W. FROM NE CORNER OF FOSS DLC 62.

FINAL PROOF SURVEY
 UNDER

-  PRIMARY
-  SUPPLEMENTAL FROM WELL No. 2
-  SUPPLEMENTAL FROM WELLS No. 3 & 4

Application No. G-8007 Permit No. G-7720
 IN NAME OF

GERALD E. ROTH

Surveyed JUNE 26 1980, by C.L. HUGHES