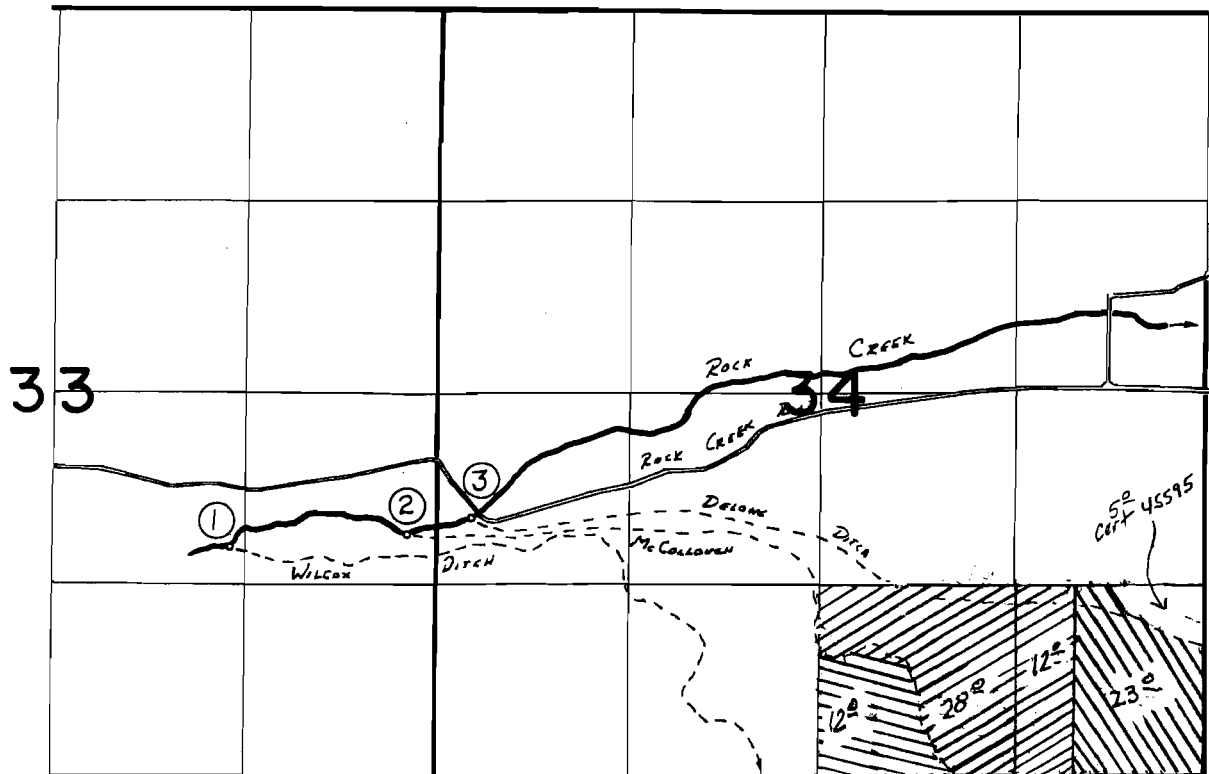


T. 7S., R. 38E., W.M.



1. WILCOX DITCH Div. Pt. Loc: 1580'N. & 1430'W. FROM SE CORNER SECTION 33
2. McCOLLOUGH DITCH Div. Pt. Loc: 1670'N. & 200'W. FROM SE CORNER SECTION 33
3. DELONG DITCH Div. Pt. Loc: 1790'N. & 230'E. FROM SW CORNER SECTION 34




FINAL PROOF SURVEY
UNDER

TRANSFER 3688

IN NAME OF

.....**BILL & MARY**.....**DETHLOFF**.....

Surveyed *8-5*..... 19*83*., by *V.L. Church*.....

-  1882
-  1868
-  1904



SCALE 1" = 1320'