

T6S, R5W, WM

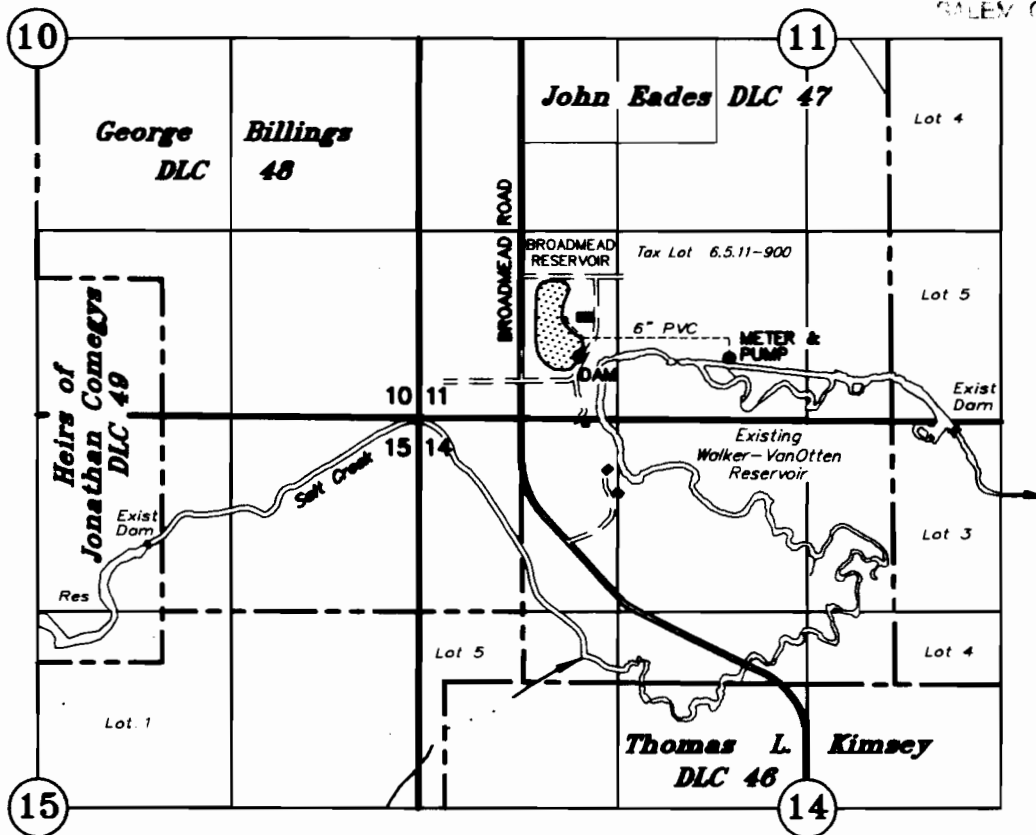
POLK COUNTY

RECEIVED

SEP 24 2010

WATER RESOURCES DIVISION
SALEM, OREGON

TAX LOT:
6.5.11 900



POD 1: 2228' North and 1405' East of the SW Corner John Eades DLC 47,
with approved fish screen on end of foot valve and meter at pump.

DAM: 2237' North and 380' East of the SW Corner John Eades DLC 47

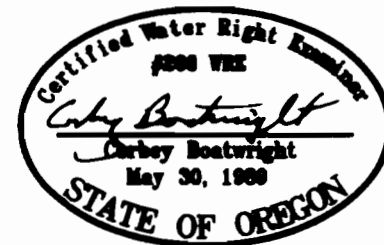
CLAIM OF BENEFICIAL USE

UNDER

Application No. R-81521 Permit No. R-12635

BROADMEAD, LLC

AUGUST 27, 2010
SCALE: 1" = 1320'



NOTE: This map is for the purpose of identifying the location of water rights and has no intent to dimension or locate property ownership lines.

EXPIRES 12-31-13