

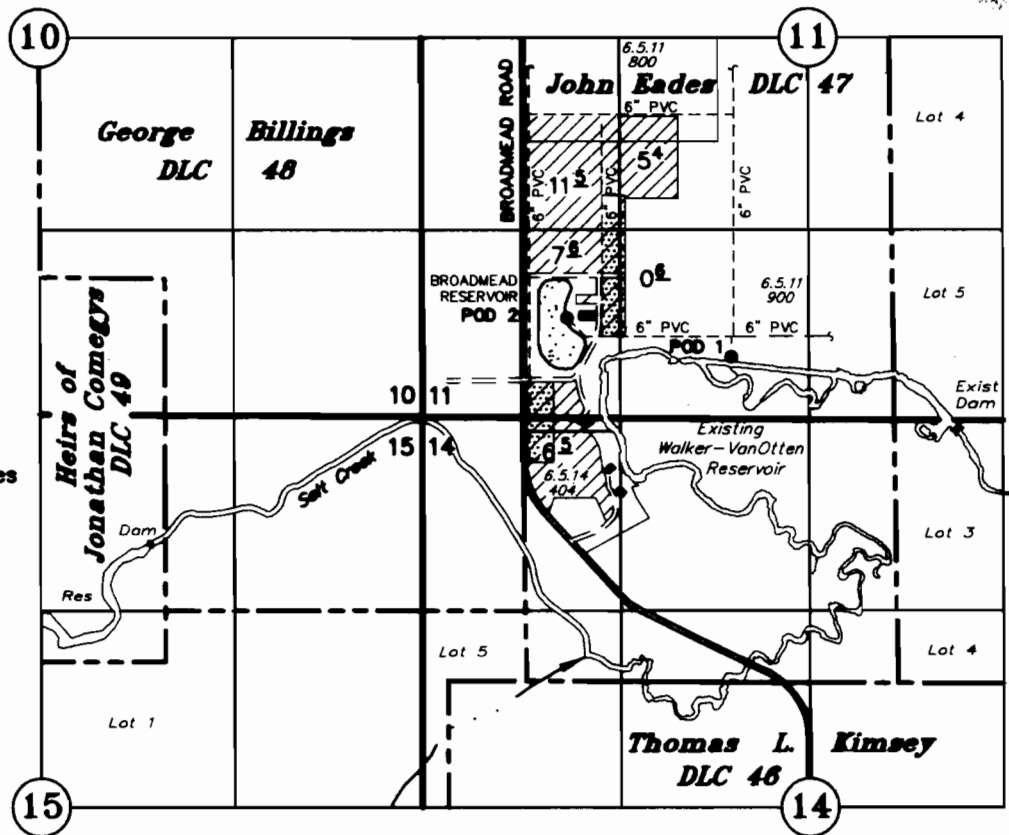
T6S, R5W, WM

POLK COUNTY

WATER RIGHTS DEPT
MAY 30 2009

TAX LOTS:
6.5.11 800
6.5.11 900
6.5.14 404

 Greenhouses



- POD 1: 2228' North and 1405' East of the SW Corner John Eades DLC 47, with approved fish screen on end of foot valve and meter at pump.
- POD 2: 2495' North and 283' East of the SW Corner John Eades DLC 47 with screened intake.
Meter: 2480' North and 303' East of the SW Corner John Eades DLC 47 (in pump house)

CLAIM OF BENEFICIAL USE

UNDER

Application No. S-81522 Permit No. S-53555

BROADMEAD, LLC

AUGUST 27, 2010
SCALE: 1" = 1320'



EXPIRES 12-31-13

NOTE: This map is for the purpose of identifying the location of water rights and has no intent to dimension or locate property ownership lines.