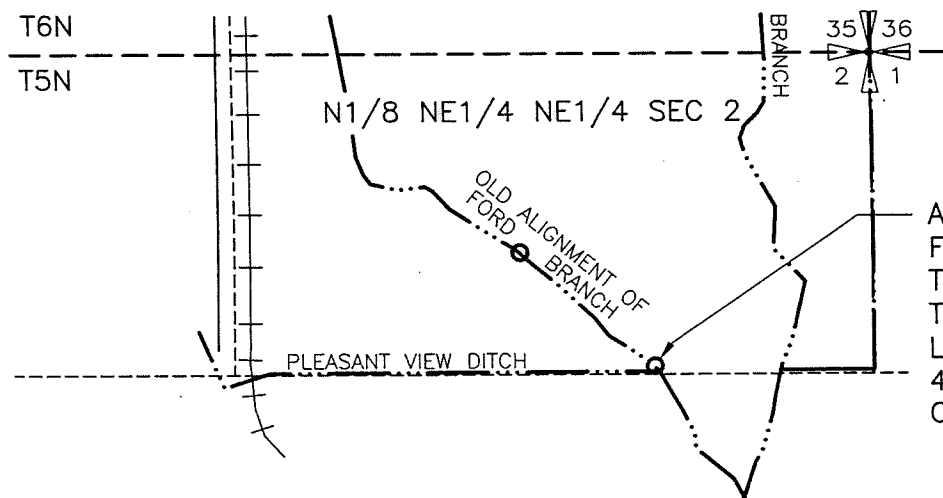


**FINAL PROOF MAP
FOR
T-7640, T-7641, T-7642,
T-7643 AND T-7644
T5N AND 6N, R35E WM
UMATILLA CO, OREGON
JULY 2001**

RECEIVED
OCT 01 2001
WATER RESOURCES DEPT.
SALEM, OREGON

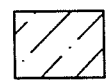
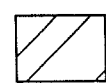


AUTHORIZED P.O.D.
FOR T-7640
T-7641, T-7642,
T-7643 AND T-7644
LOCATED 650' SOUTH AND
450' WEST OF THE NE
COR. SECTION 2


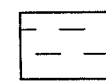

LEGEND

PRIORITY DATE ACREAGE

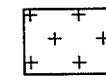
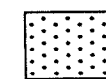
T-7640

	1890	6.0
	1904	1.5

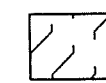
T-7641

	1890	2.0
	1891	2.75
	1895	5.25

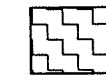
T-7642

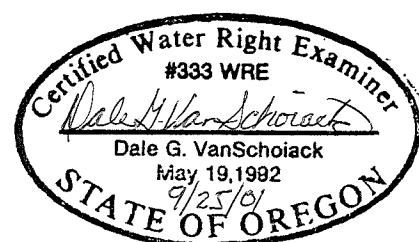
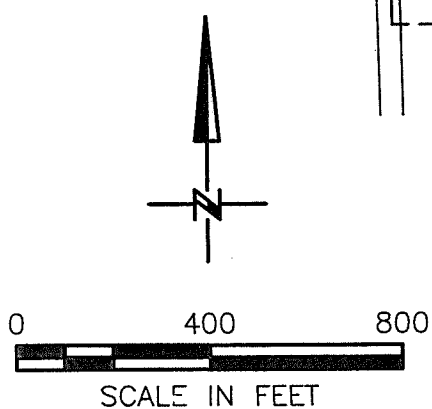
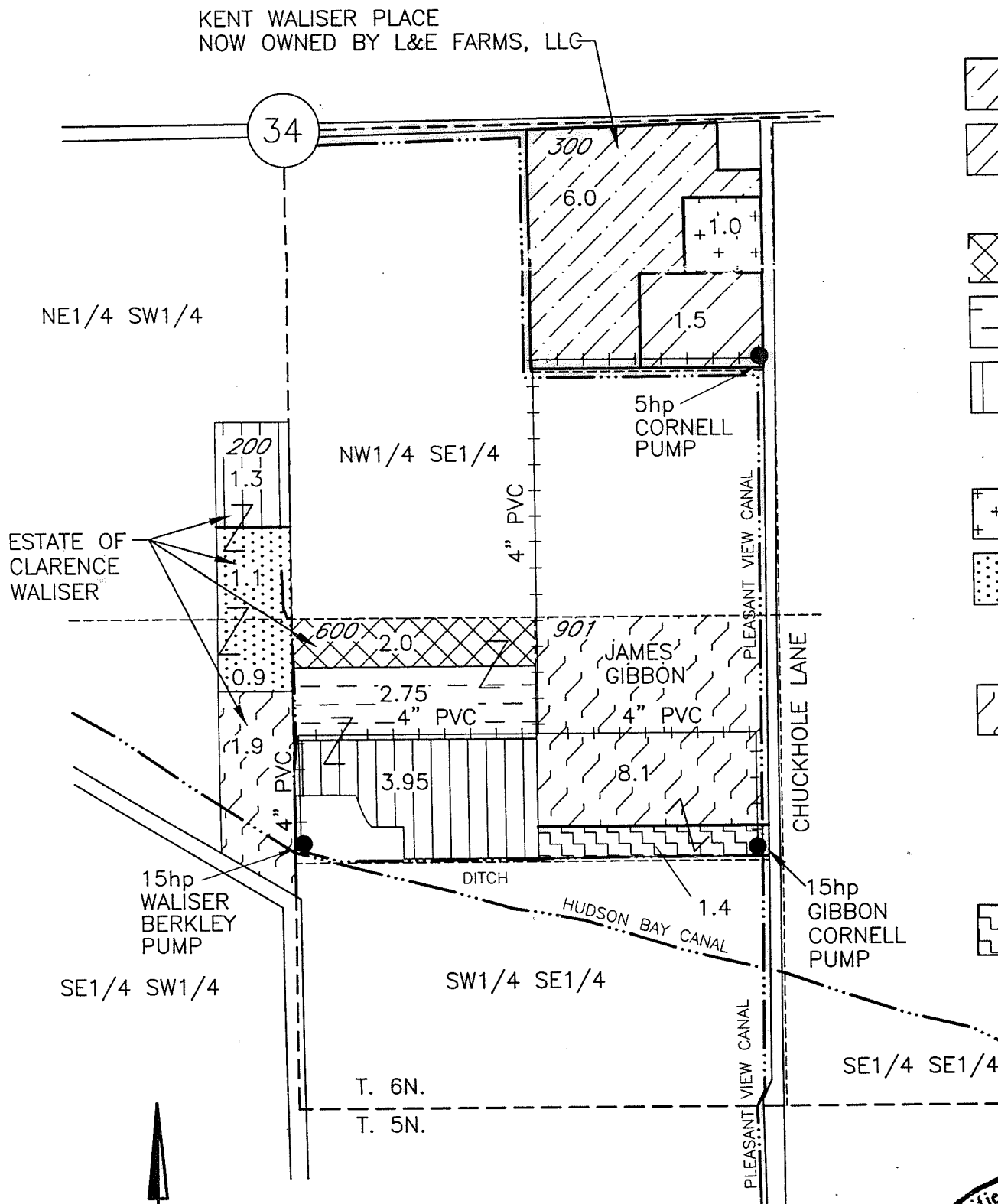
	1871	1.0
	1890	2.0

T-7643

	PRIMARY PERMIT 1216 3/25/1912 SUPPLEMENTAL PERMIT 26001 1/16/1959	10.0
---	---	------

**GIBBON'S PORTION
OF T-7644**

	PRIMARY PERMIT 8193 10/5/1927 SUPPLEMENTAL PERMIT 26001 1/16/1959	1.4
---	---	-----



9/18/01
3522.034
3522WAL3.DWG