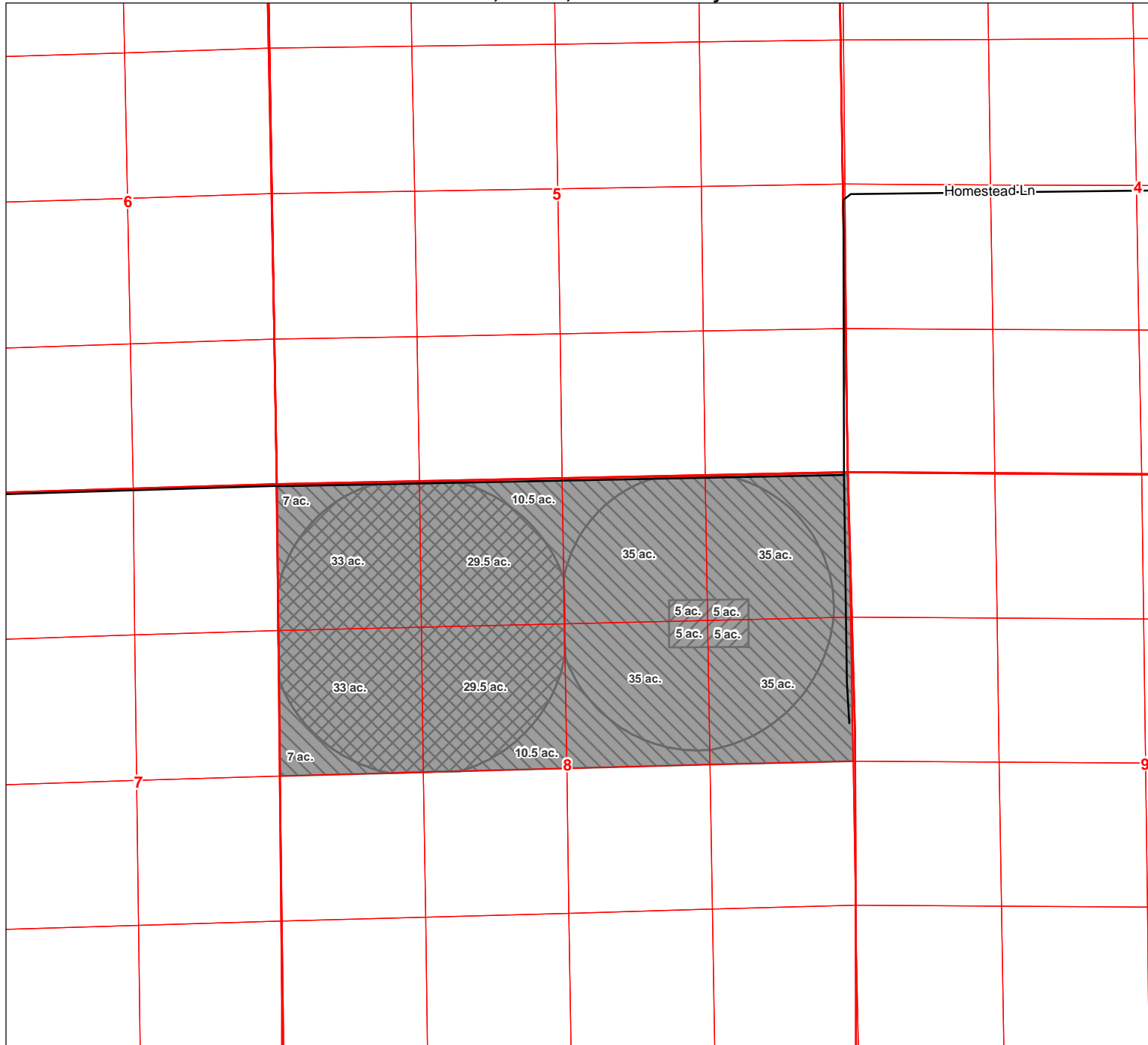


# C.88115 (87893 diminished by CW-68)

T. 3N, R. 27E, Morrow County



## EXHIBIT B

Homestead Farms, Inc.  
Map of Groundwater Rights  
to be Diminished

### LEGEND

- 88115 Primary
- 31097 Primary
- 88115 Supplemental
- Irrigated Land
- Roads



0 330 660 990 1,320  
Feet

MAP NOTES:  
Date: February 8, 2011  
Data Sources: ESRI, OWRD

