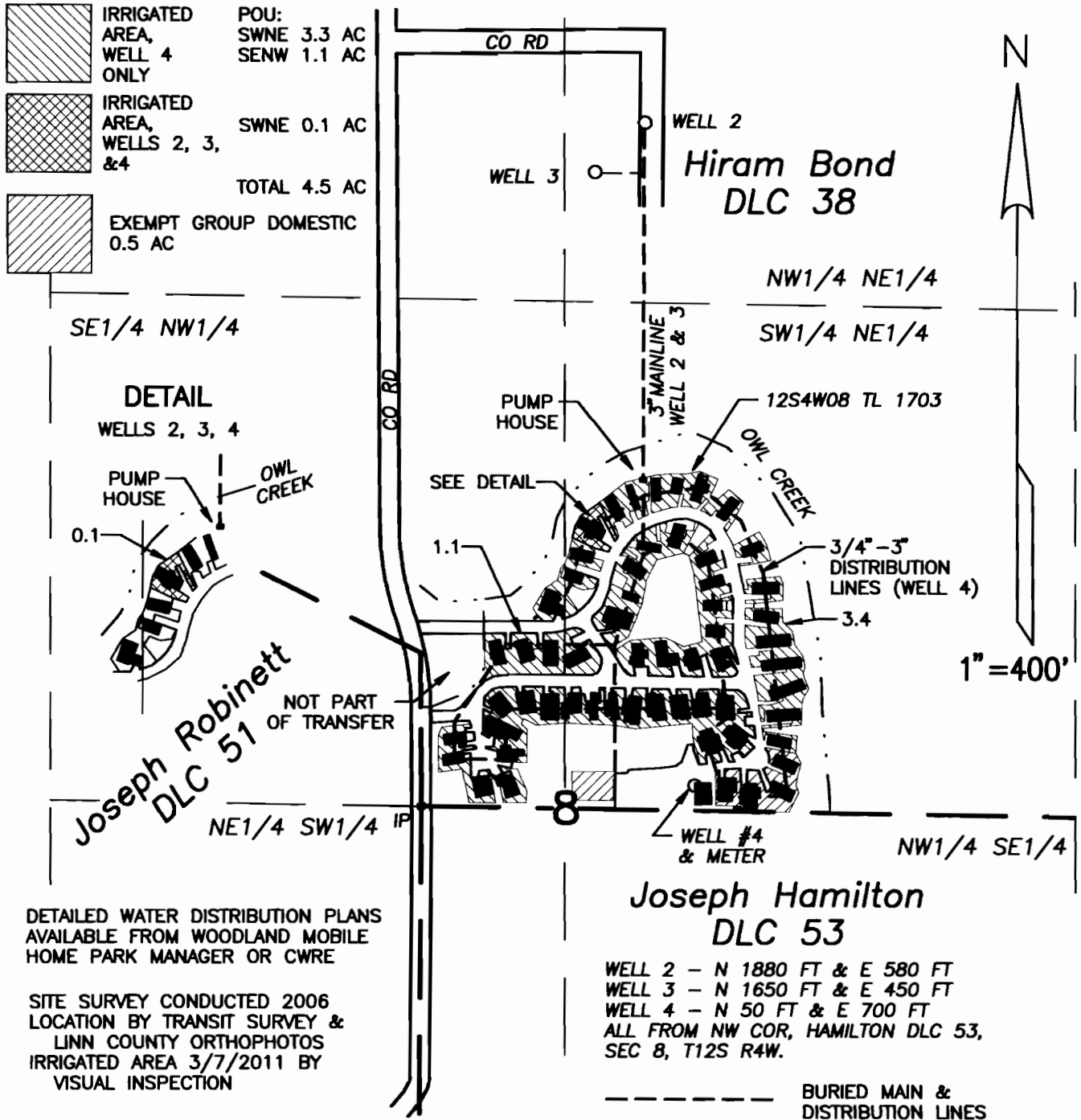


# T12S, R4W, SEC 8, W.M.



DETAILED WATER DISTRIBUTION PLANS AVAILABLE FROM WOODLAND MOBILE HOME PARK MANAGER OR CWRE

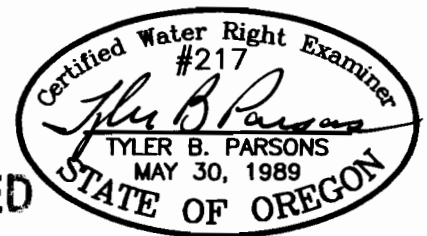
SITE SURVEY CONDUCTED 2006  
 LOCATION BY TRANSIT SURVEY &  
 LINN COUNTY ORTHOPHOTOS  
 IRRIGATED AREA 3/7/2011 BY  
 VISUAL INSPECTION

## CLAIM OF BENEFICIAL USE MAP

IN THE NAME OF

**G B Enterprises LLC**  
 Transfer T-10400

Prepared: 4/7/2011  
 PARSONS SURVEYING  
 1915 S.E. Stone St.  
 Corvallis, OR 97333  
 541-752-7515  
 Project No. 1026



**RECEIVED**

JUN 13 2011

EXP: 12/31/2012

THIS MAP IS NOT INTENDED TO PROVIDE LEGAL DIMENSIONS OR LOCATIONS OF PROPERTY OWNERSHIP LINES

WATER RESOURCES DEPT  
 SALEM, OREGON