

SE 1/4 SECTION 13, T29S, R5W, WM

13

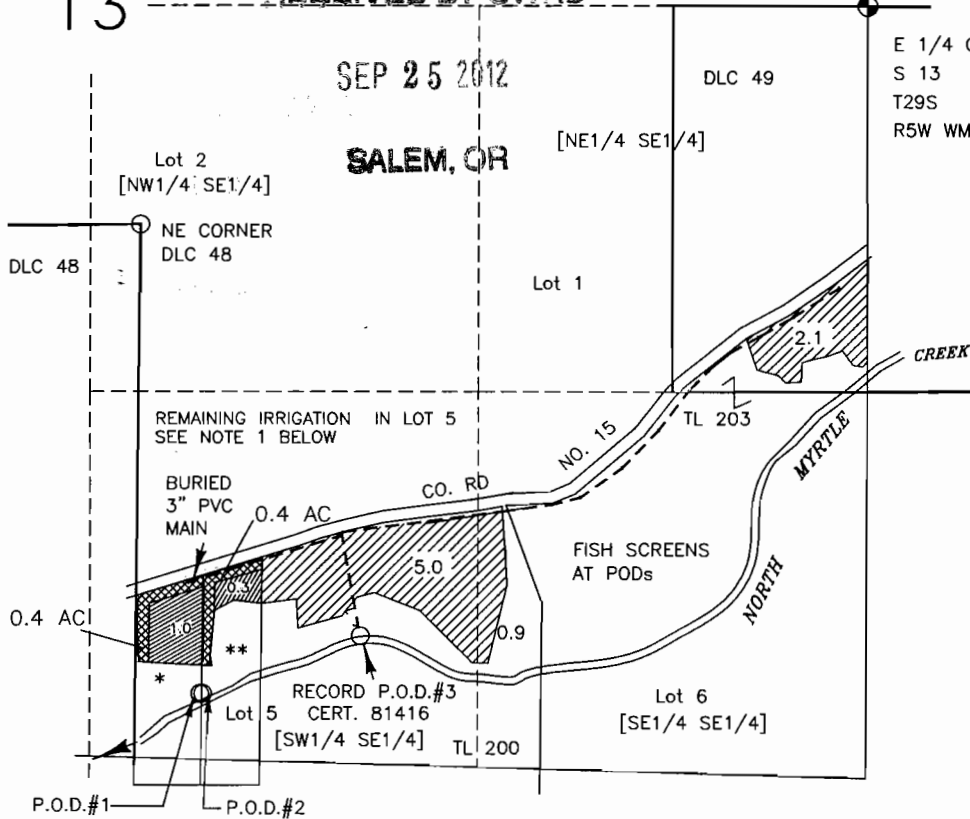
RECEIVED BY OWRD

SEP 25 2012

SALEM, OR

E 1/4 COR.
S 13
T29S
R5W WM.

AREA TO TRANSFER FROM IRRIGATION TO DOMESTIC USE FOR 2 HOUSES
PARCELS TWO AND THREE TO EACH TRANSFER 0.4 ACRES TO DOMESTIC USE
AREA REMAINING UNDER IRRIGATION (NOT INCLUDED IN TRANSFER)



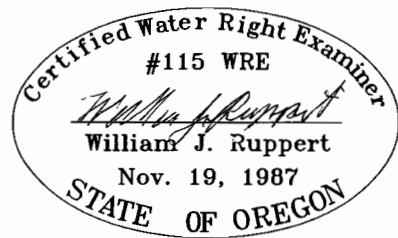
THIS MAP IS TO BE USED FOR WATER RIGHT PURPOSES ONLY

POD #1 1600' SOUTH & 215' EAST FROM THE NE CORNER DLC 48
POD #2 1600' SOUTH & 225' EAST FROM THE NE CORNER DLC 48
POD #3 2160' SOUTH & 1715' WEST FROM THE E1/4 CORNER SEC. 13

- * PARCEL 2 OF LAND PARTITION 2006-24, TAX LOT 201
ASSESSOR PAGE 29 05 13 (1.0 ACRES IRRIGATION REMAINING)
- ** PARCEL 3 OF LAND PARTITION 2006-24, TAX LOT 202
ASSESSOR PAGE 29 05 13 (0.3 ACRES IRRIGATION REMAINING)

POD 1 AND 2 ARE FOR DOMESTIC USE AND ADDITIONAL PODs FOR IRRIGATION.

HOUSES ARE NOT CONSTRUCTED AS OF SEPT. 2012.
DOMESTIC USE CLAIM FOR TRAVEL TRAILER.



EXPIRES 12/31/2012

MAP TO ACCOMPANY CLAIM OF BENEFICIAL USE TRANSFER NUMBER T-10312

IN NAME OF

Stanley E. Tenold

BY: WILLIAM J. RUPPERT
P.O. BOX 1564
MYRTLE CREEK, OR 97457
SEPT. 24, 2012



0 330 660 1320

SCALE

SCALE 8"=1MILE

NOTE 1
1.0 ACRES IN TAXLOT 201
0.3 ACRES IN TAXLOT 202
5.0 ACRES NOT IN TRANSFER
6.3 ACRES IN GOV. LOT 5

TRANSFER NUMBER T-10312

13

RECEIVED BY OWRD

SEP 25 2012

SALEM, OR

E 1/4 COR.
S 13
T29S
R5W WM.

DLC 49

Lot 2
[NW1/4 SE1/4]

[NE1/4 SE1/4]

Lot 1

NE CORNER
DLC 48

REMAINING IRRIGATION IN LOT 5
SEE NOTE 1 BELOW

BURIED
3" PVC
MAIN

0.4 AC

CO. RD

NO. 15

TL 203

NORTH MYRTLE CREEK

FISH SCREENS
AT PODs

0.4 AC

1.0

**

Lot 5
[SW1/4 SE1/4]
TL 200

RECORD P.O.D.#3
CERT. 81416

Lot 6

[SE1/4 SE1/4]

5.0

0.9

P.O.D.#1

P.O.D.#2

- POD #1 1600' SOUTH & 215' EAST FROM THE NE CORNER DLC 48
- POD #2 1600' SOUTH & 225' EAST FROM THE NE CORNER DLC 48
- POD #3 2160' SOUTH & 1715' WEST FROM THE E1/4 CORNER SEC. 13