

RECEIVED

AUG 17 2000

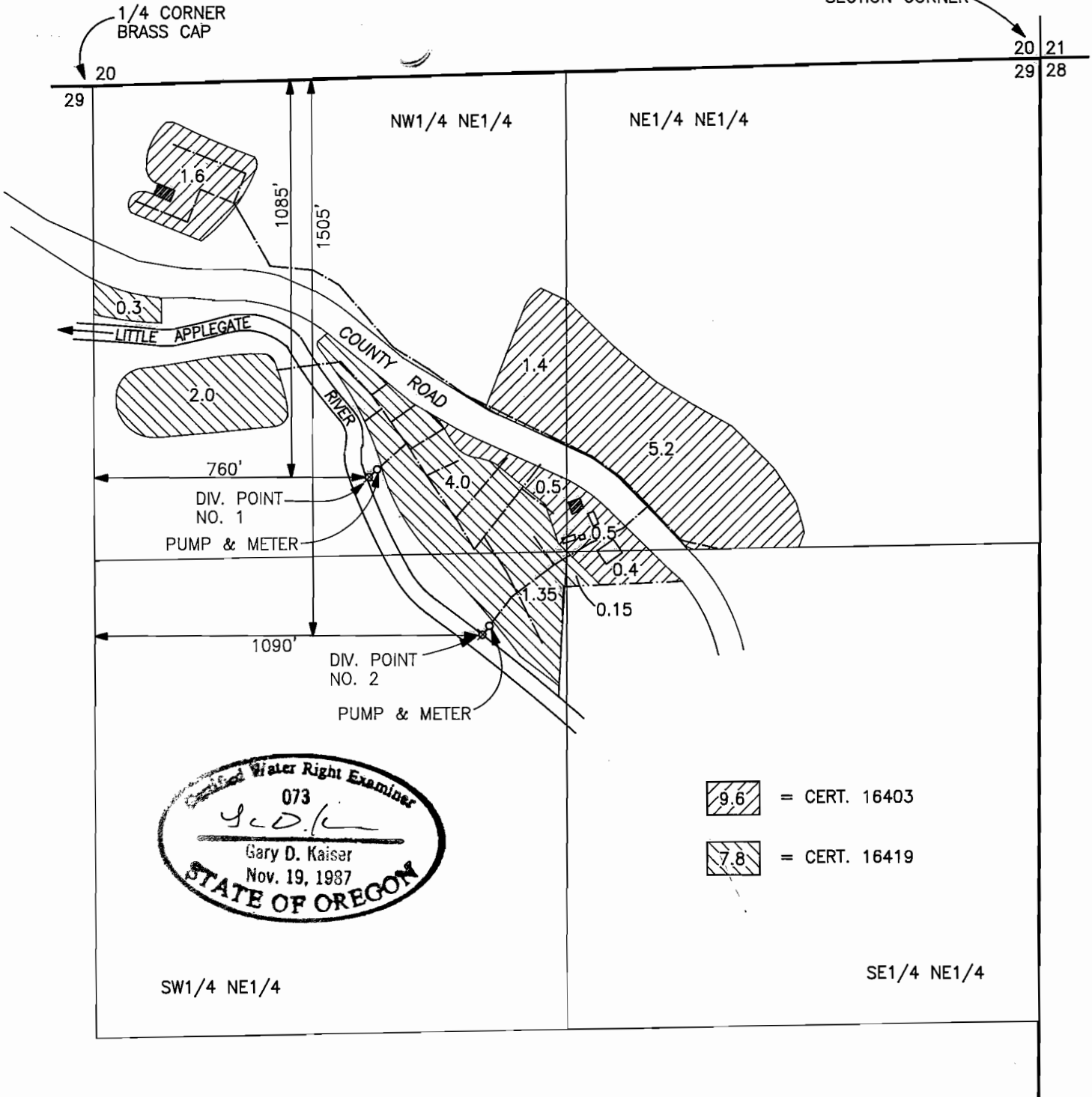
**WATER RESOURCES DEPT.
SALEM, OREGON**

T.39S.,R.2W.,W.M.

SECTION CORNER

1/4 CORNER
BRASS CAP

20 21
29 28



FINAL PROOF MAP
APPLICATION No. T-6738

IN THE NAME OF
STEVEN WEAVER

MAP PREPARED AUGUST 12, 2000 BY GARY D. KAISER

NOTE: MAP PREPARED FOR
WATER RIGHT PURPOSES ONLY,
NOT FOR PROPERTY BOUNDARY
LOCATIONS.



SCALE 1" = 400'