

**RECEIVED**

**AUG 17 2000**

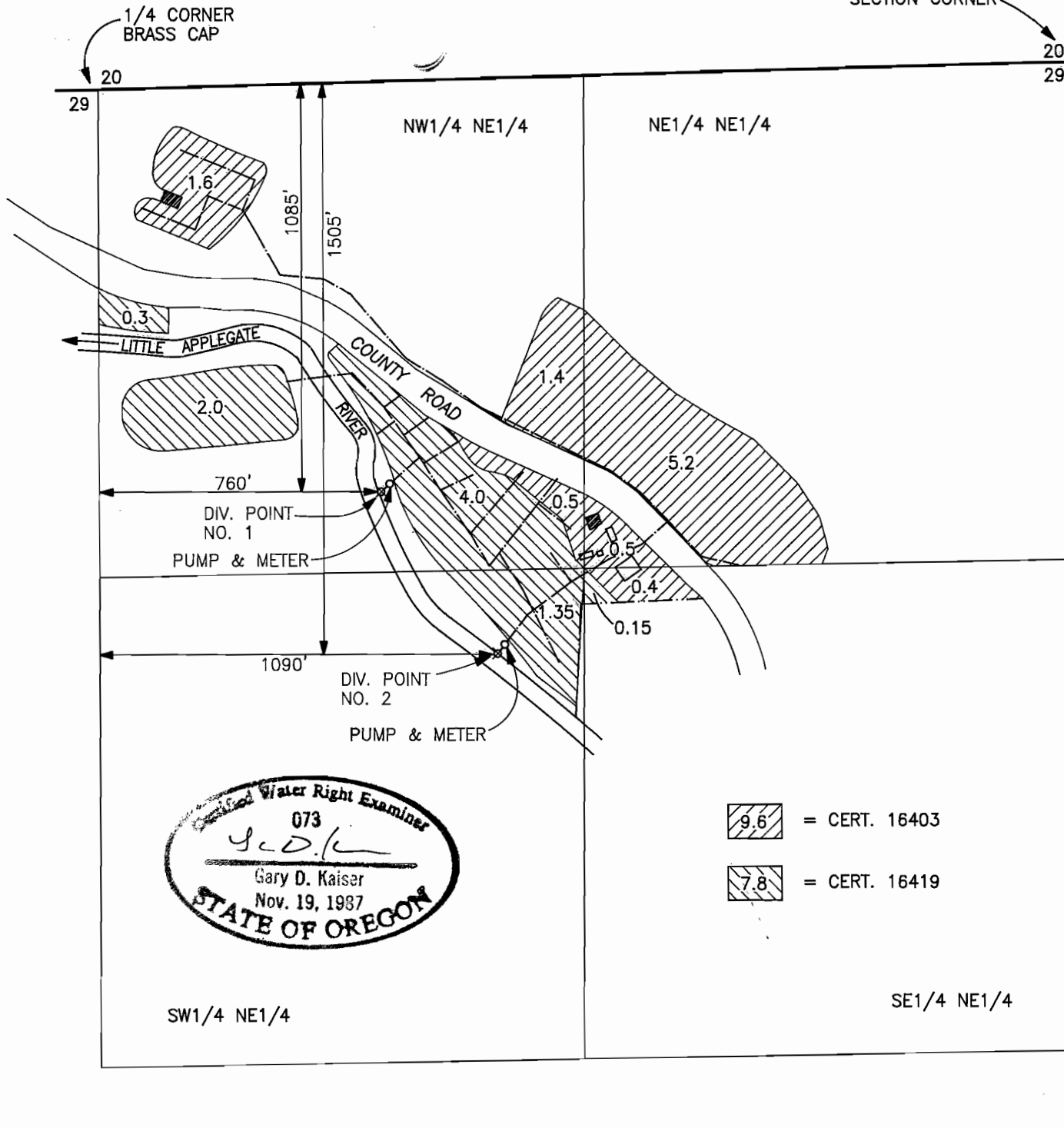
**WATER RESOURCES DEPT.  
SALEM, OREGON**

**T.39S.,R.2W.,W.M.**

SECTION CORNER

1/4 CORNER  
BRASS CAP

20 21  
29 28



**FINAL PROOF MAP**  
APPLICATION No. T-6738

IN THE NAME OF  
STEVEN WEAVER

MAP PREPARED AUGUST 12, 2000 BY GARY D. KAISER

NOTE: MAP PREPARED FOR  
WATER RIGHT PURPOSES ONLY,  
NOT FOR PROPERTY BOUNDARY  
LOCATIONS.

