

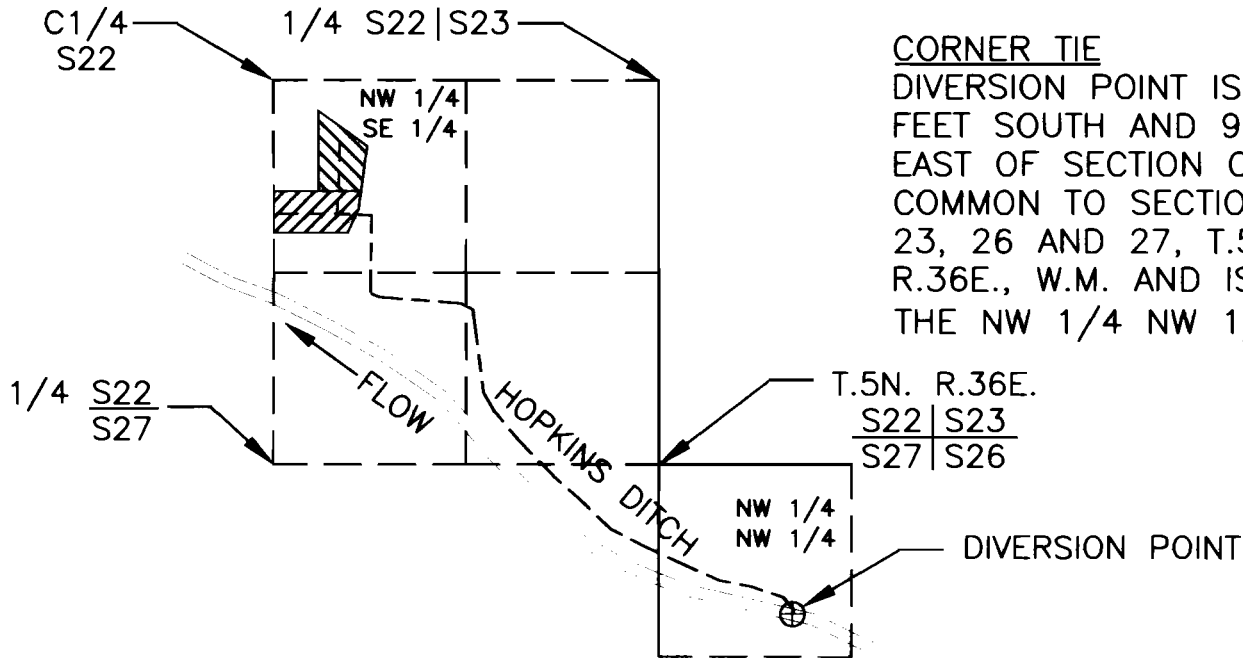
FINAL PROOF SURVEY
AND
CLAIM OF BENEFICIAL USE

LOCATED WITHIN
NW 1/4, SE 1/4, SECTION 22, T.5N., R.36E., W.M.,
UMATILLA COUNTY, OREGON

APPLICANTS: WALT AND HELEN C. ROLOFF



TRANSFER 8822

SPECIAL ORDER VOLUME 57, PAGE 115



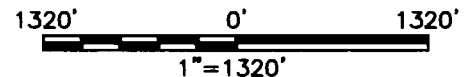
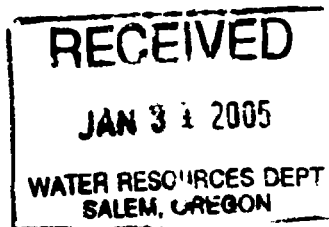
CORNER TIE
DIVERSION POINT IS 1,027 FEET SOUTH AND 915 FEET EAST OF SECTION CORNER COMMON TO SECTIONS 22, 23, 26 AND 27, T.5N., R.36E., W.M. AND IS WITHIN THE NW 1/4 NW 1/4, S26.

LEGEND

- ⊕ DIVERSION POINT
- - - HOPKINS DITCH
-  AREA IRRIGATED FROM CERT. 13280, 3.05 ACRES. 1884 PRIORITY DATE
-  AREA IRRIGATED FROM CERT. 12713, 3.55 ACRES. 1885 PRIORITY DATE

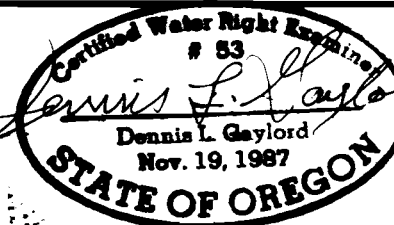
AREA IRRIGATED

PRIORITY 1884:	3.05 ACRES
PRIORITY 1885:	3.55 ACRES
TOTAL	6.60 ACRES



THIS MAP IS PREPARED FOR THE EXPRESS PURPOSE TO SHOW WATER APPROPRIATION AND USE. IT IS NOT INTENDED TO SHOW OR LOCATE PROPERTY OWNERSHIP LINES.

©



Renews 6/30/2005

DENNIS L. GAYLORD,
CWRE
71614 S.W. LAKE DRIVE
PENDLETON, OR 97801
(541)-276-6260
NOVEMBER, 2004

Mill Creek Drafting