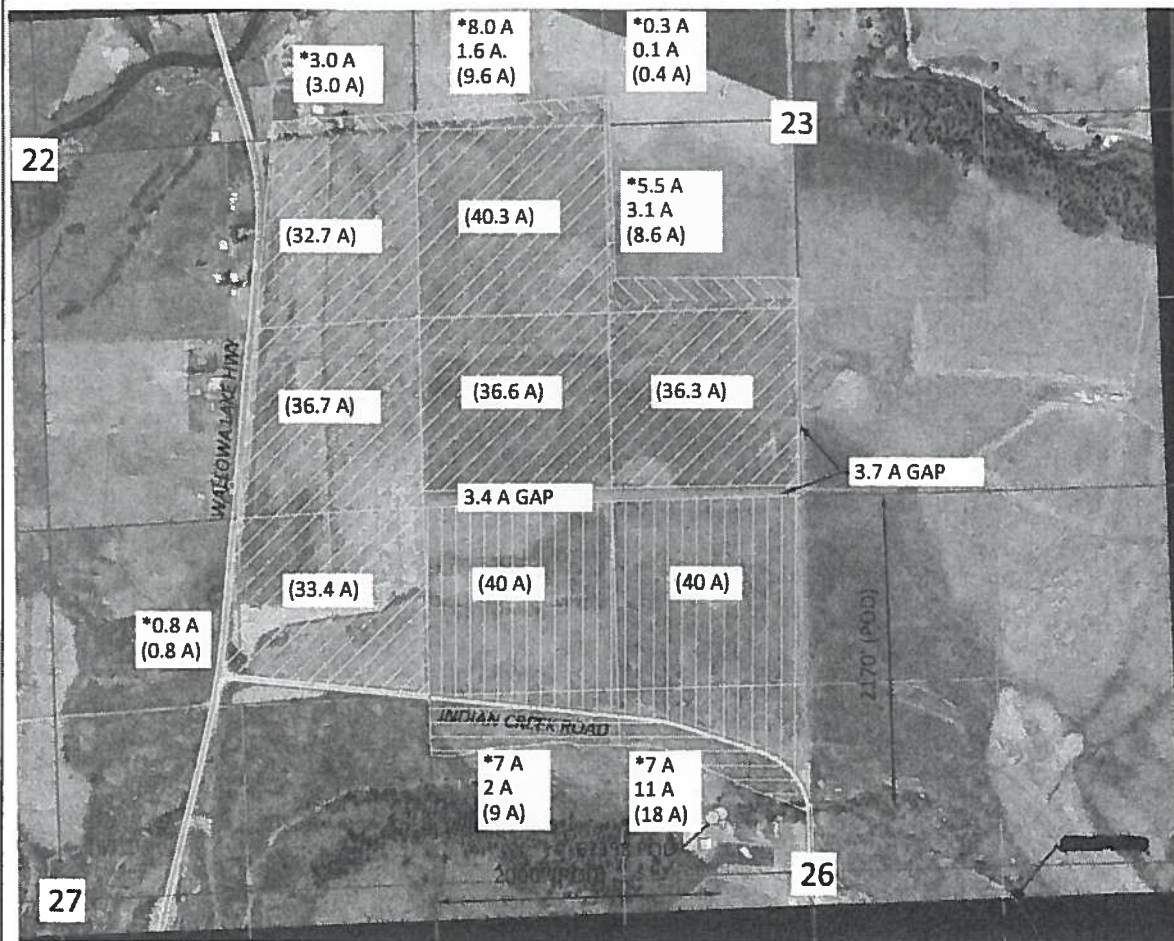


RECEIVED



JUL 20 2012

WATER RESOURCES DEPT
SALEM, OREGON

SECTIONS 22, 23, 26 & 27, T1N, R39E, W.M. UNION COUNTY



EXPLANATION

-  CERTIFICATE 6371
PRIORITY DATE: 1869
93 ACRES ON PROPERTY/14 ACRES OFF PROPERTY
-  CERTIFICATE 67358
PRIORITY DATE: JUNE 14, 1979
220.8 ACRES ON PROPERTY/ 17.6 ACRES OFF PROPERTY
- POINT OF DIVERSION
- () ACREAGE IRRIGATED IN QUARTER QUARTER SECTION
- * WATER RIGHT ACREAGE IN QUARTER QUARTER SECTION OUTSIDE OF PROPERTY

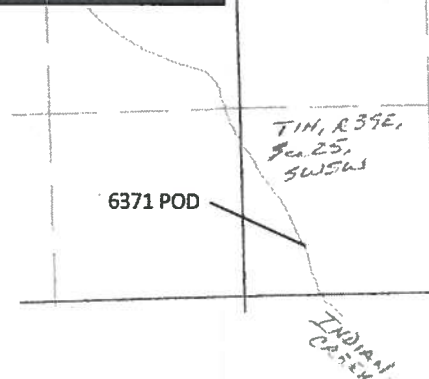
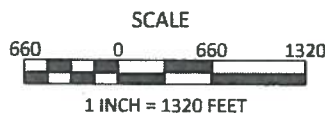


P.O. BOX 80174
PORTLAND, OR 97280
(503) 319-8926

RECEIVED

JUL 13 2012

WATER RESOURCES DEPT
SALEM, OREGON



AERIAL PHOTO SOURCE: USDA NAIP 2011
JUNE 4, 2012

THIS MAP IS NOT INTENDED TO
PROVIDE LEGAL DIMENSIONS OR
LOCATIONS OF PROPERTY
OWNERSHIP LINES

Elgin Farm
Water Rights Map
Pine Creek Investments LLC.

T011447