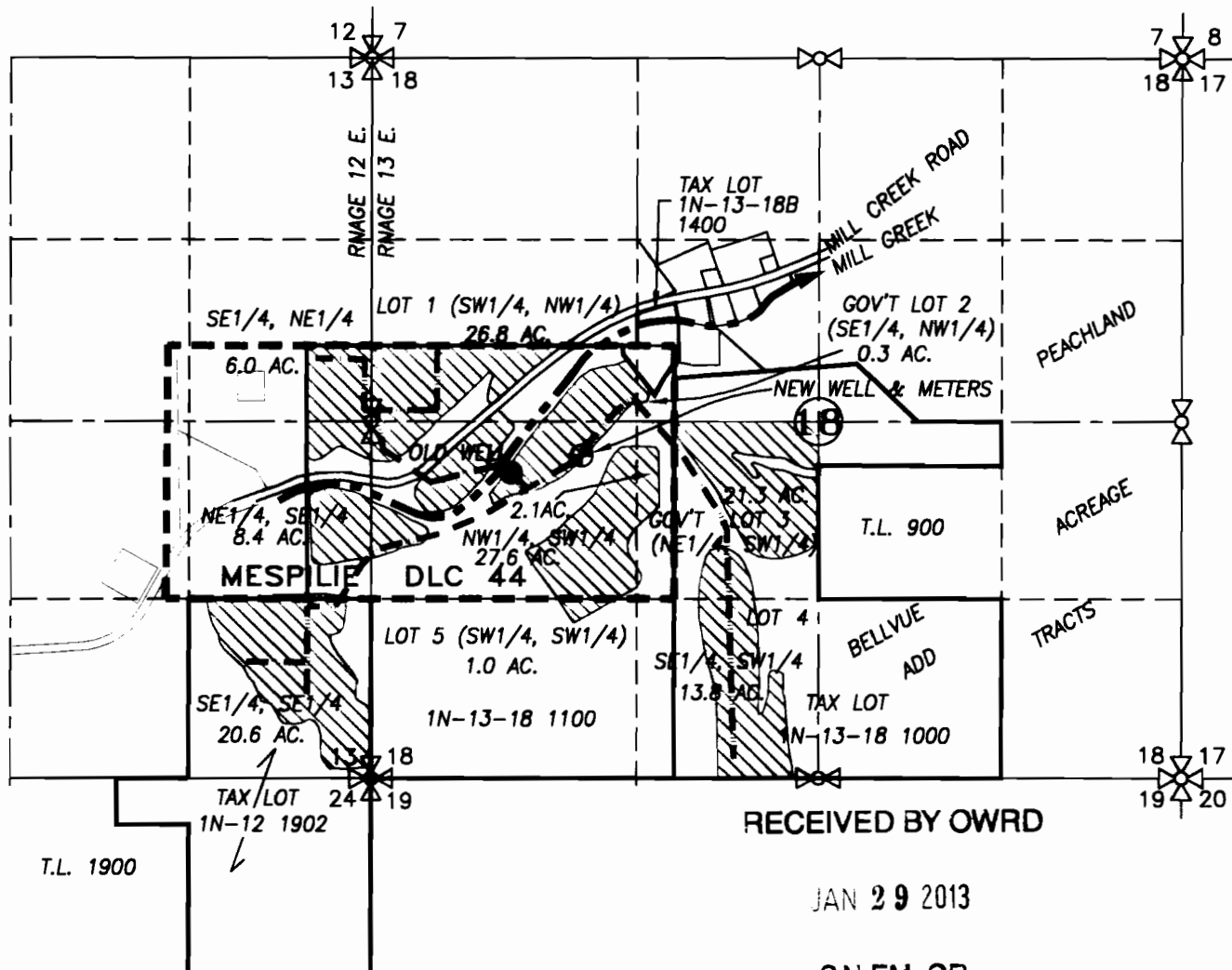


SECTION 13, TWP.1 N. RANGE 12 E. AND
SECTION 18, TWP.1 N. RANGE 13 E. W.M.
WASCO COUNTY, OREGON






RECEIVED BY OWRD

JAN 29 2013

SALEM, OR

- OLD WELL: 1205' W. & 940' S. OF NE COR. D.L.C. #44
- NEW WELL: 685' W. AND 815' S. OF NE COR. D.L.C. #44

-  EXISTING APPLICATION AREA
-  EXISTING IRRIGATION MAIN
-  MESPILIE D.L.C. 44 LINE

CLAIM OF BENEFICIAL USE MAP

SCALE: 1" = 1320'



TRANSFER No. 10218

IN THE NAME OF:
LONNIE WRIGHT

DATE: AUGUST 3, 2012
AMENDED JANUARY 28, 2013

BY: **TENNESON ENGINEERING CORP.**
3313 W. 2ND. STREET, SUITE 100
THE DALLES, OREGON. 97058
PH. 541-296-9177
FAX 541-296-6657



EXPIRES: 06/30/2014

NOTE:

"THIS MAP IS NOT INTENDED TO PROVIDE DIMENSIONS OR LOCATIONS OF PROPERTY OWNERSHIP LINES."

W.O. #12168wr