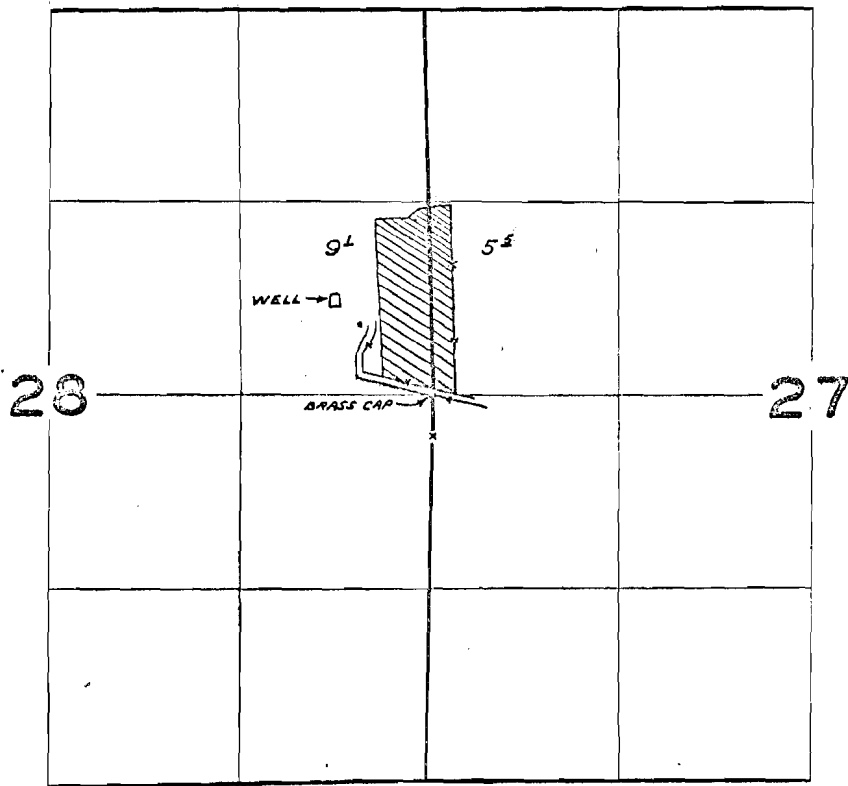


T.23S.R.10E.W.M.



FINAL PROOF SURVEY UNDER

Application No. G-1977 Permit No. G-1271
IN NAME OF

R. S. HAWTHORNE

Surveyed JUN. 18. 1964, by R. JACKSON

g-1271
1964-C 208



1" = 1320'

NOTE: THIS MAP IS NOT INTENDED TO PROVIDE LEGAL DIMENSIONS OR LOCATIONS OF PROPERTY OWNERSHIP LINES.

KLAMATH COUNTY, OREGON

TOWNSHIP 23 SOUTH
RANGE 10 EAST,
WILLAMETTE MERIDIAN

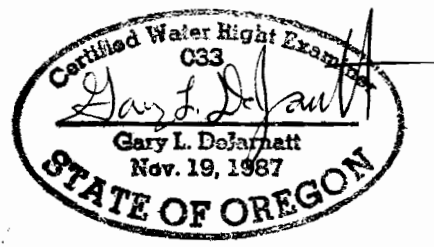
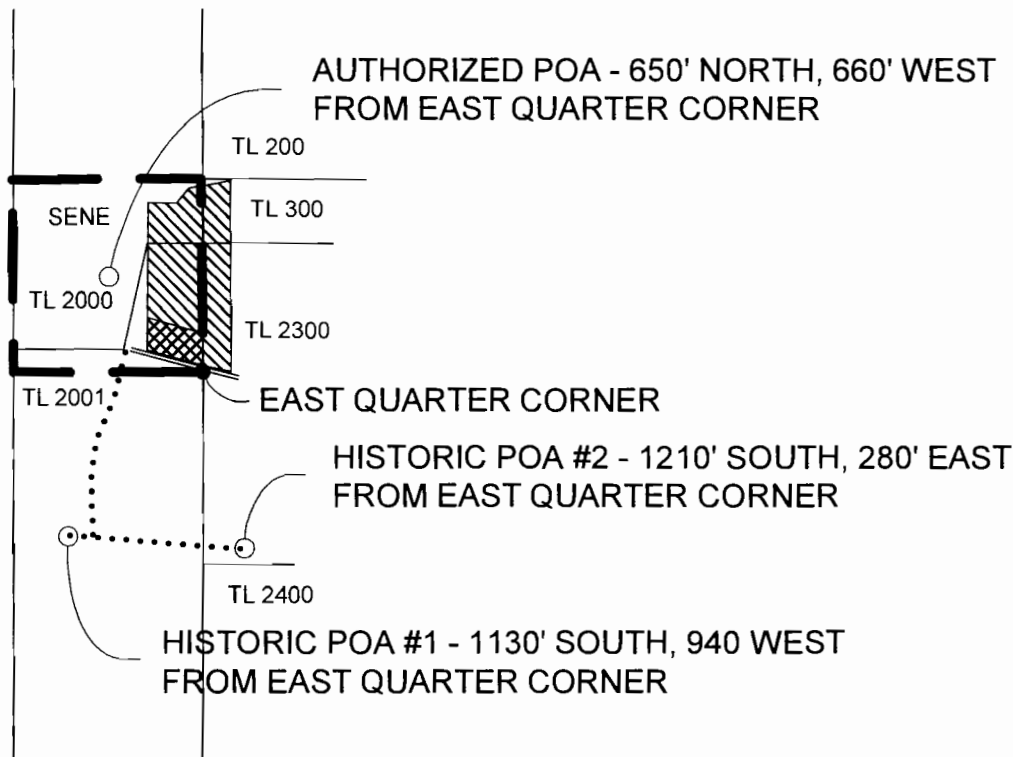
SECTION 28
SE 1/4 NE 1/4 9.1 ACRES TOTAL
2.0 ACRES "FROM"
7.1 ACRES REMAINING

PERMIT G-1271 CERTIFICATE 33418

RECEIVED BY OWRD





AUG 20 2012

SALEM, OR



RENEWAL DATE: 12-31-2013

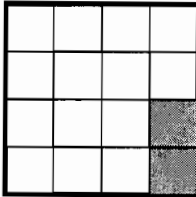
1011463

-  POU - REMAINING
-  "FROM" LANDS
-  QUARTER QUARTER BOUNDARIES
-  BURIED PIPELINE

TITLE		
TRANSFER "FROM" MAP for JOHN M. LIPKOWITZ		
WATER RIGHT SERVICES, LLC		WWW.OREGONWATER.US
P.O. BOX 1830, BEND OR 97709		(541) 389-2837
DATE	JOHNSHORT@USA.COM	JOB#
AUG 14, 2012		12046

Proposed POA – Pond Well – 500' West,
1260' South of East Quarter Corner.

East Quarter Corner

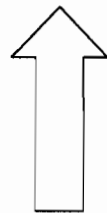


T22S, R10E
Section 30

RECEIVED BY OWRD

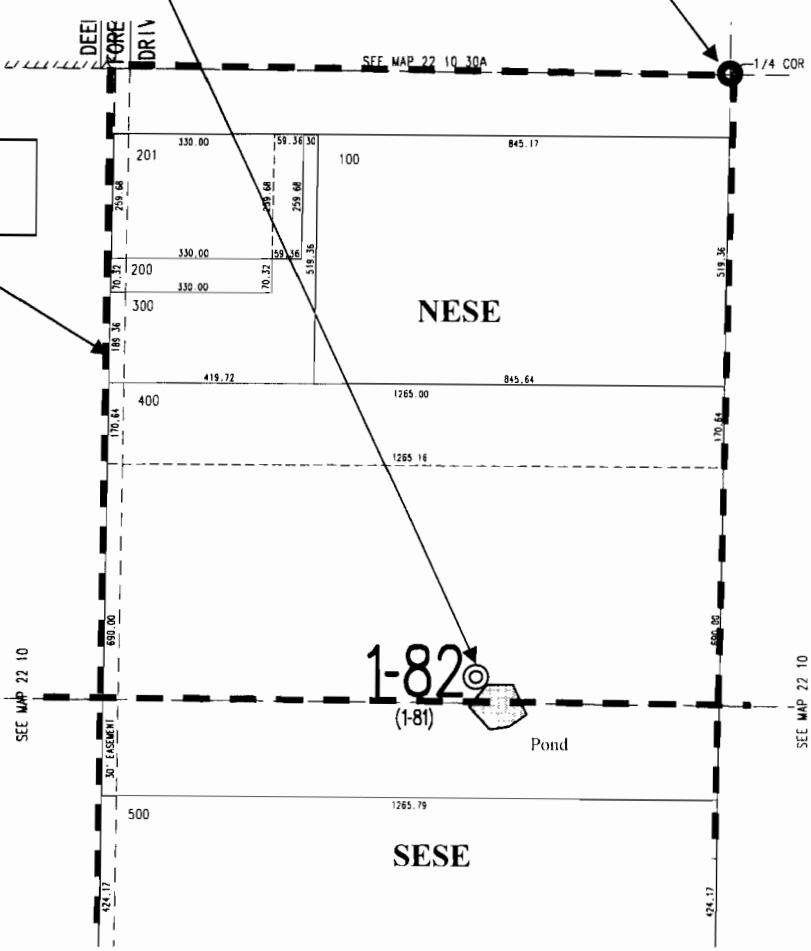
AUG 20 2012

SALEM, OR
North



1 inch equals 400 feet

Quarter-Quarter
Section Boundaries.



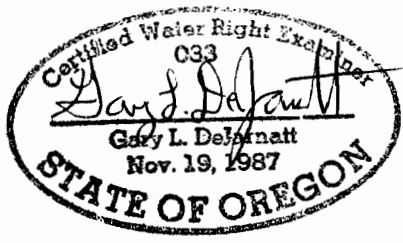
This map is not intended to provide legal
dimensions or locations of property ownership lines.

Transfer Application "TO" Map for John M. Lipkowitz

- Proposed Place of Use
- Approximate Well Location
- Approximate Corner Location

August 17, 2012

John A. Short
Water Right Services, LLC
 P.O. Box 1830
 Bend, OR 97709
 541-389-2837
johnshort@usa.com
www.oregonwater.us



JOB# 12046

RENEWAL DATE: 12-31-2013

1011463