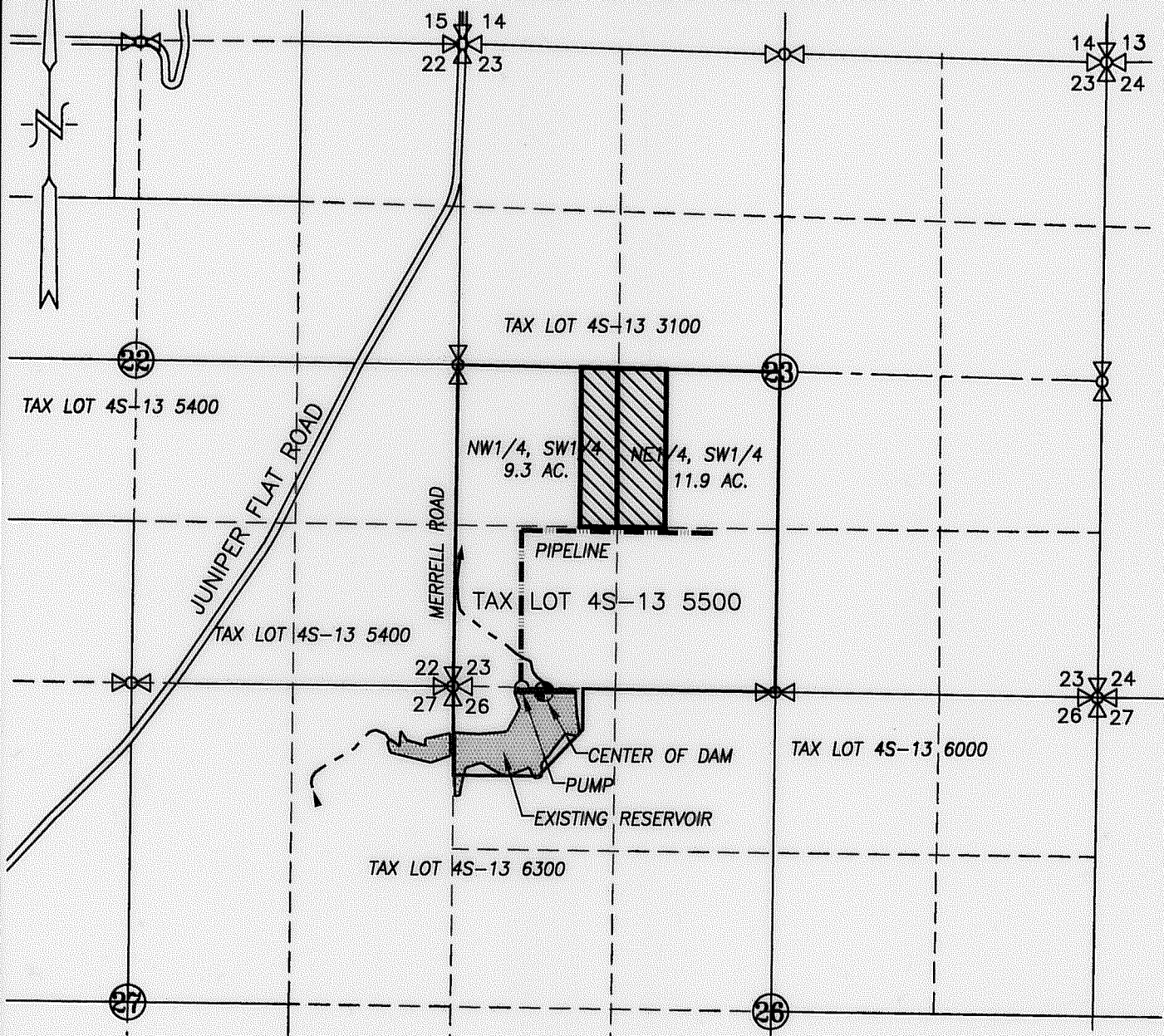





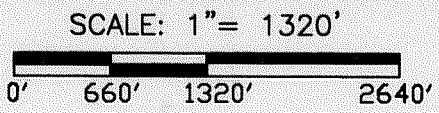
SECTION 23, TWP.4 S. RANGE 13 E. W.M.  
WASCO COUNTY, OREGON



**LEGEND :**

- ⊙ APPROX. CENTER OF DAM: 40' S. & 750' E. OF NW COR. SECTION 26
-  TRANSFERRED IN AREA = 21.2 ACRES
-  EXISTING IRRIGATION MAIN (8" AND 6")
-  STREAM WITH DIRECTIONAL FLOW

**CLAIM OF BENEFICIAL USE MAP**



TRANSFER No. 7334

IN THE NAME OF:

**RECEIVED**  
AUG 12 2011  
WATER RESOURCES DEPT  
SALEM, OREGON

CERTIFIED WATER RIGHT EXAMINER  
132  
*Larry M. Toll*  
LARRY M. TOLL  
NOV. 19, 1987