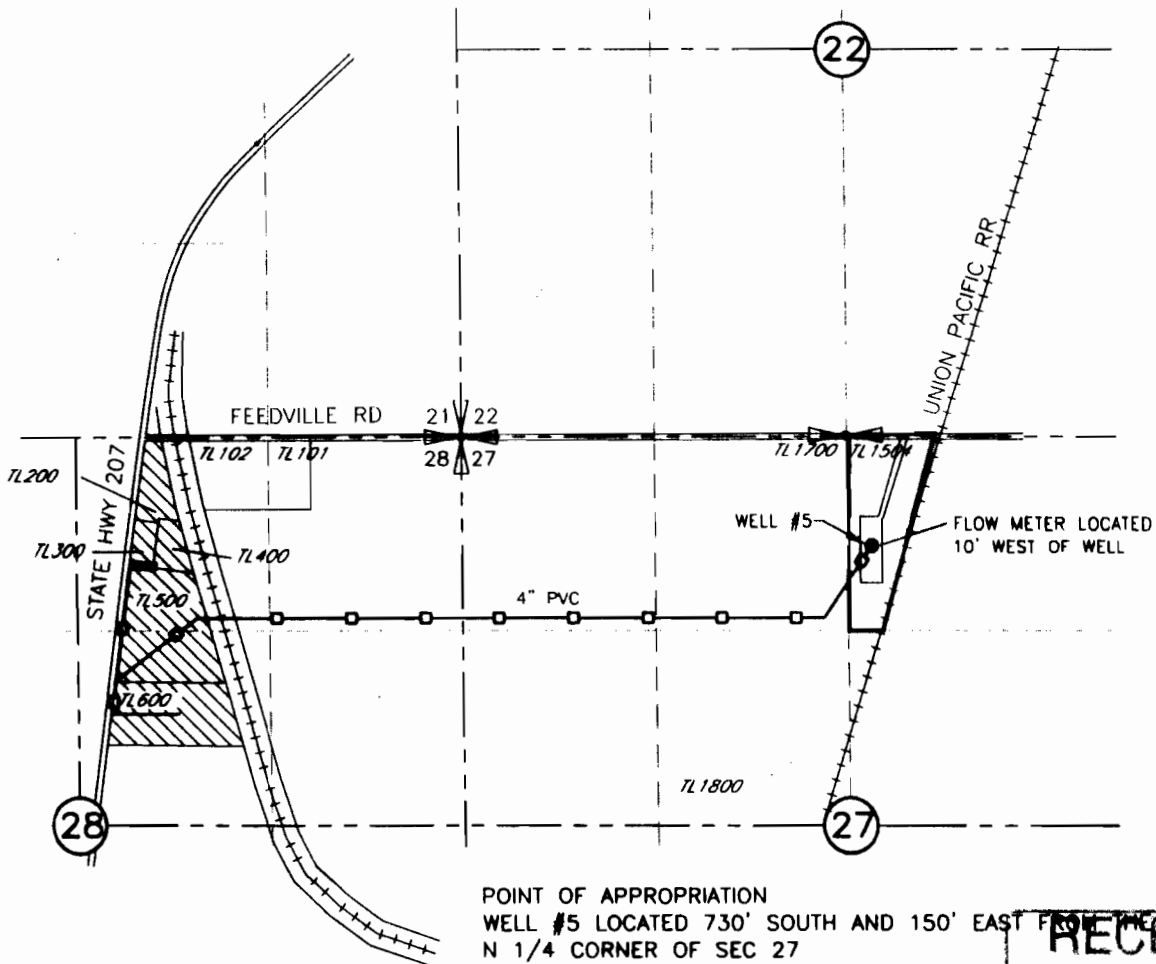



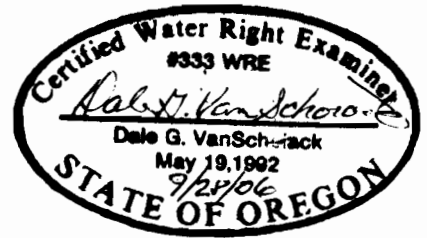
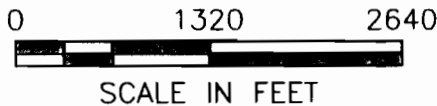
JB LAND, LLC
 FINAL PROOF MAP
 FOR T-9518
 T4N, R28E, WM



POINT OF APPROPRIATION
 WELL #5 LOCATED 730' SOUTH AND 150' EAST FROM THE
 N 1/4 CORNER OF SEC 27

LEGEND
 AREA OF INDUSTRIAL USE

RECEIVED
 NOV 01 2006
 WATER RESOURCES DEPT
 SALEM, OREGON



NOTE:
 THE PURPOSE OF THIS MAP IS TO IDENTIFY THE APPROXIMATE LOCATION
 OF THE WATER RIGHT. IT IS NOT INTENDED TO PROVIDE INFORMATION
 RELATIVE TO THE LOCATION OF PROPERTY OWNERSHIP BOUNDARY LINES.

DRAWING: H:\CAD\AG\3522\311\3522311FP.dwg
 PRINTED BY: Roger Willard on 09/24/06 06:51 AM

SCM Consultants, Inc.
 A Tetra Tech Company