

T6N, R36E, WM  
Sections 30 & 31  
Umatilla County



1 inch = 400

**LEGEND**



**Authorized POA**

**ORIGINAL WELL** located in the NW/4 of NW/4 of Section 31 320 feet S and 510 feet E from NW Corner of Sec 31 (Well Log UMAT 5199)

**NEW WELL** located in the NW/4 of NW/4 of Section 31 770 feet S and 190 feet E from NW Corner of Section 31 (Well Log UMAT 56140)



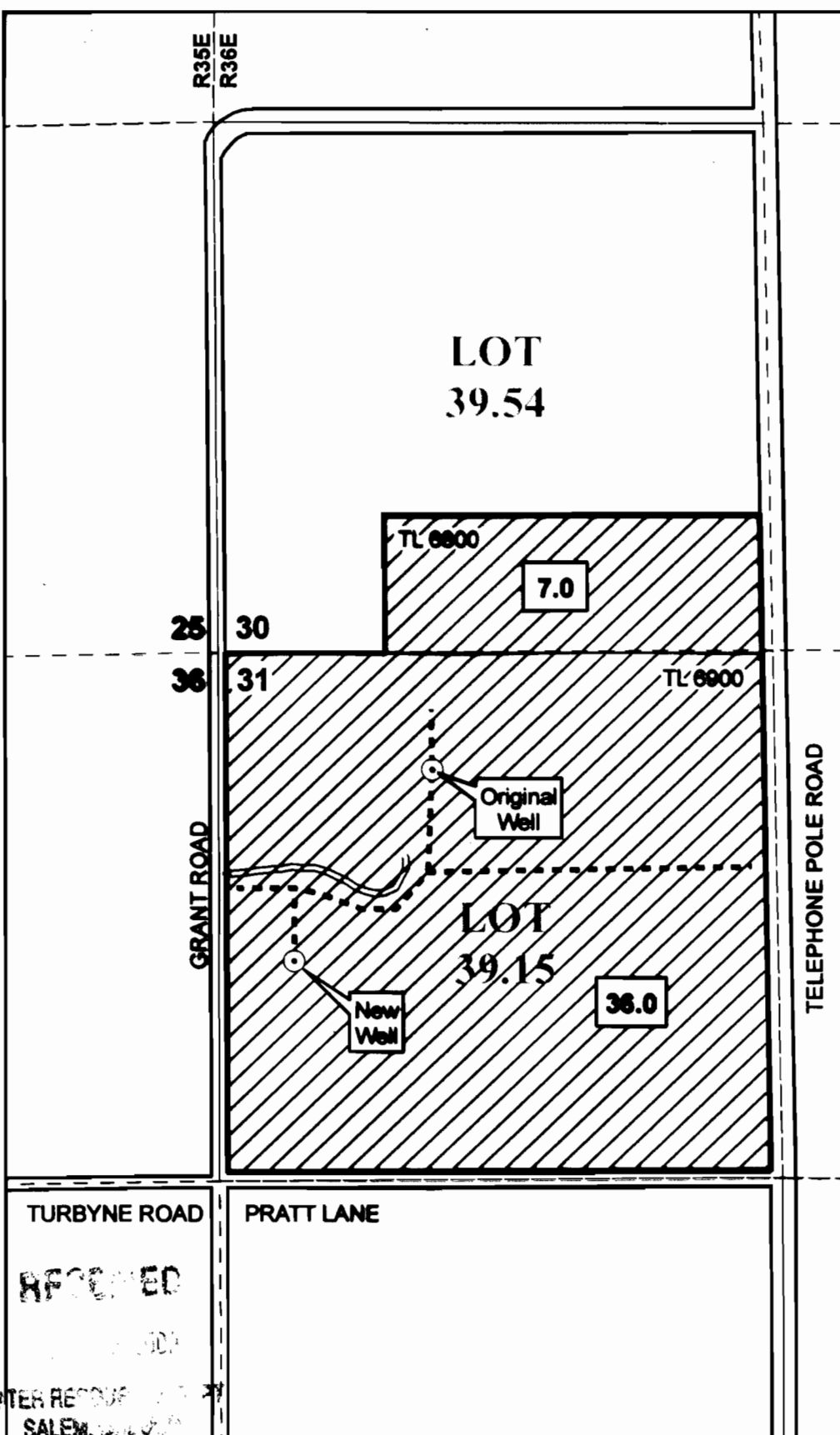
**Conveyance**

Water is conveyed from wells throughout place of use with buried, 4-inch PVC mainline. Water applied using brass impact sprinklers on aluminum handline laterals.



**Place of Use**

Water beneficially used for irrigation of grass, alfalfa and oat hay on 43.0 acres, including: 7.0 ac in SW SW of Section 30 36.0 ac in NW NW of Section 31



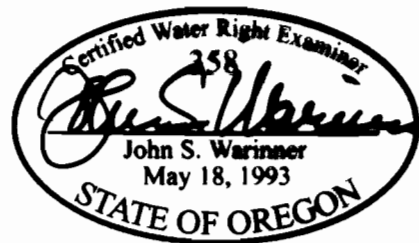
TURBYNE ROAD

PRATT LANE

RECEIVED

WATER RESOURCES DIVISION  
SALEM, OREGON

The purpose of this map is to identify the location of a water right. It is not intended to provide information regarding the location of property ownership boundary lines.



FOUNTAINHEAD  
1204 Alvarado Terrace  
Walla Walla, WA 99362  
509.529.2646 phone

**CLAIM OF BENEFICIAL USE**  
**Transfer 10325**  
**Additional POA**

in the name of  
VON DER AHE, INC.

Revised: 02 JUL 2009