

SW 1/4 OF SE 1/4

RECEIVED

OCT - 4 1996

WATER RESOURCES DEPT.
SALEM, OREGON

RECEIVED

SEP 17 1996

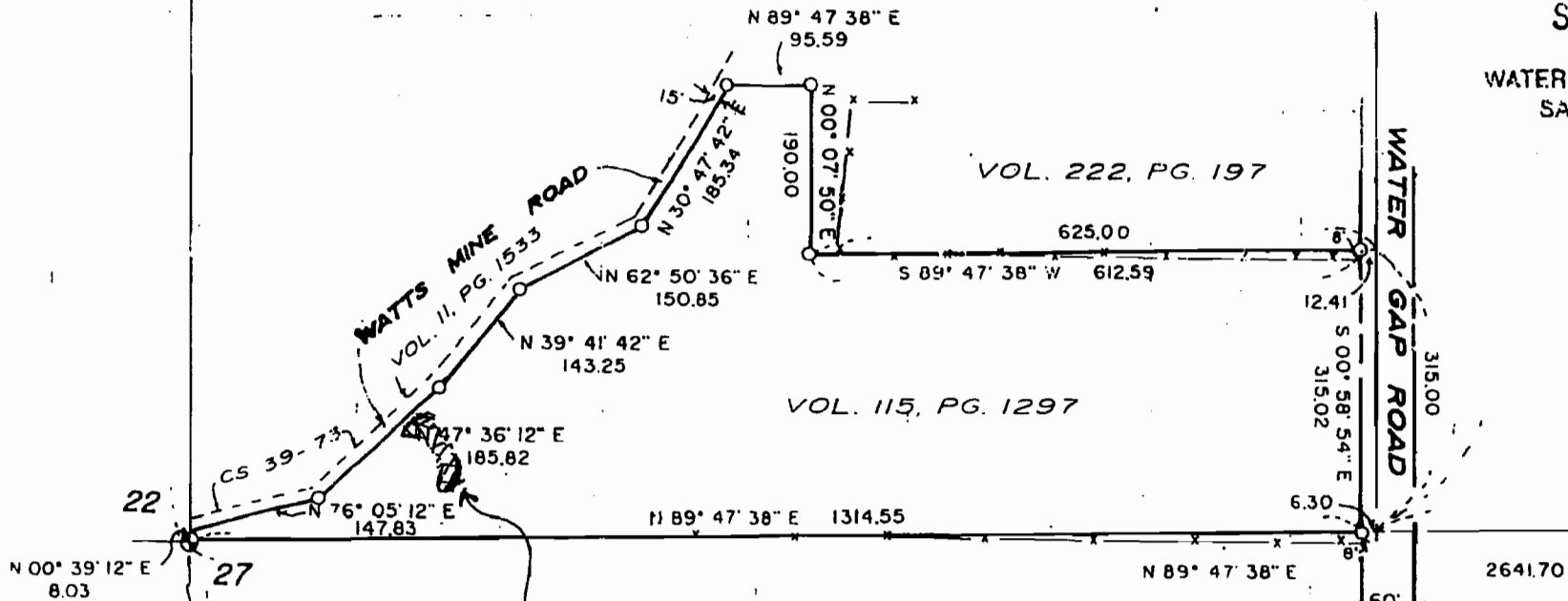
WATER RESOURCES DEPT.
SALEM, OREGON

WATER RESOURCES DEPT.
SALEM, OREGON

JAN 16 1998

RECEIVED

N 89°



FOUND JOSEPHINE COUNTY
BRASS CAP PER BK. 6, PG. 115

PROPOSED RESERVOIR

APPROX 245 FT. FROM BRASS
CORNER MARKER, MEASURING N.E.X.E.
DAM WILL BE APPROX 90 FT WIDE
7-8 FT. DEEP WITH 18" CULVERT
IN CENTER FOR SPILLWAY APPROX.
6 FT FROM BOTTOM OF DAM.

R12167

RECEIVED

WATER RESOURCES DEPT
SALEM, OREGON

2001

38-5W-22 -TL 901