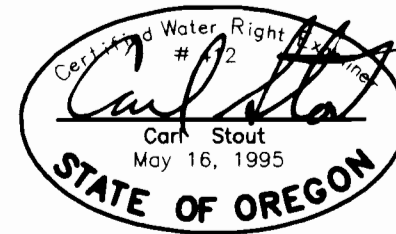
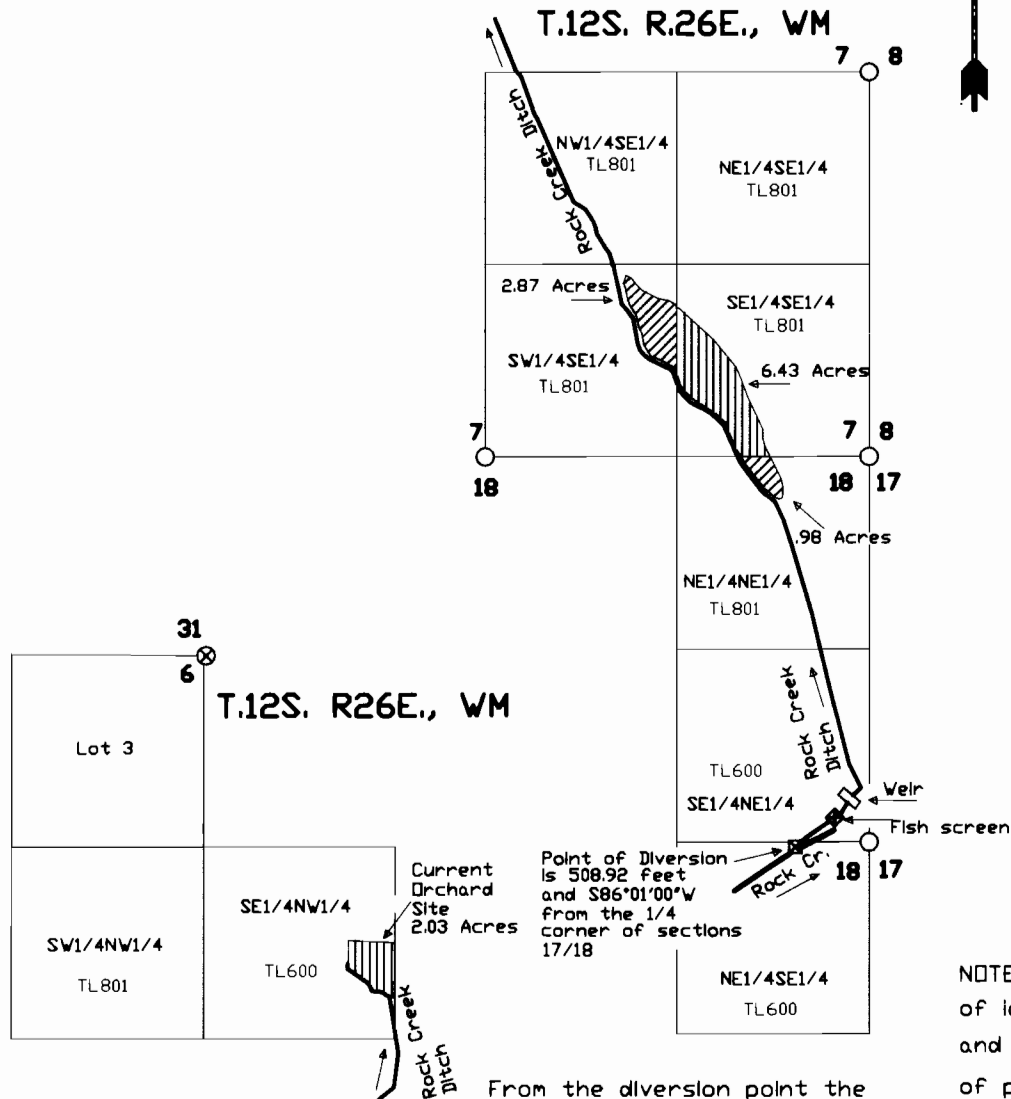


T 10405

Final Proof Survey
In the name of
The National Park Service










SEF



Basis of Bearings
Solar Observation
at the Corner 1/6/7/12
SCALE: 1 Inch = 1320 feet
Surveyed March, 2007
Amended December, 2008
Amended August 25, 2010

LEGEND

-  Lands with existing rights; Certificate #24976
-  Lands receiving transferred rights
-  Projected section corner
-  GLO corner found Grant Co. Survey #716
-  Point of Diversion
-  Fish screen and bypass
-  Weir

NOTE: The preparation of this map was for the purpose of identifying the location of the proposed water right and was not intended to provide dimension or location of property ownership lines. Location information shown hereon was furnished by the applicant.

From the diversion point the fish screen is N51°E, 350 ft. and the weir is N47°E, 490 ft.