

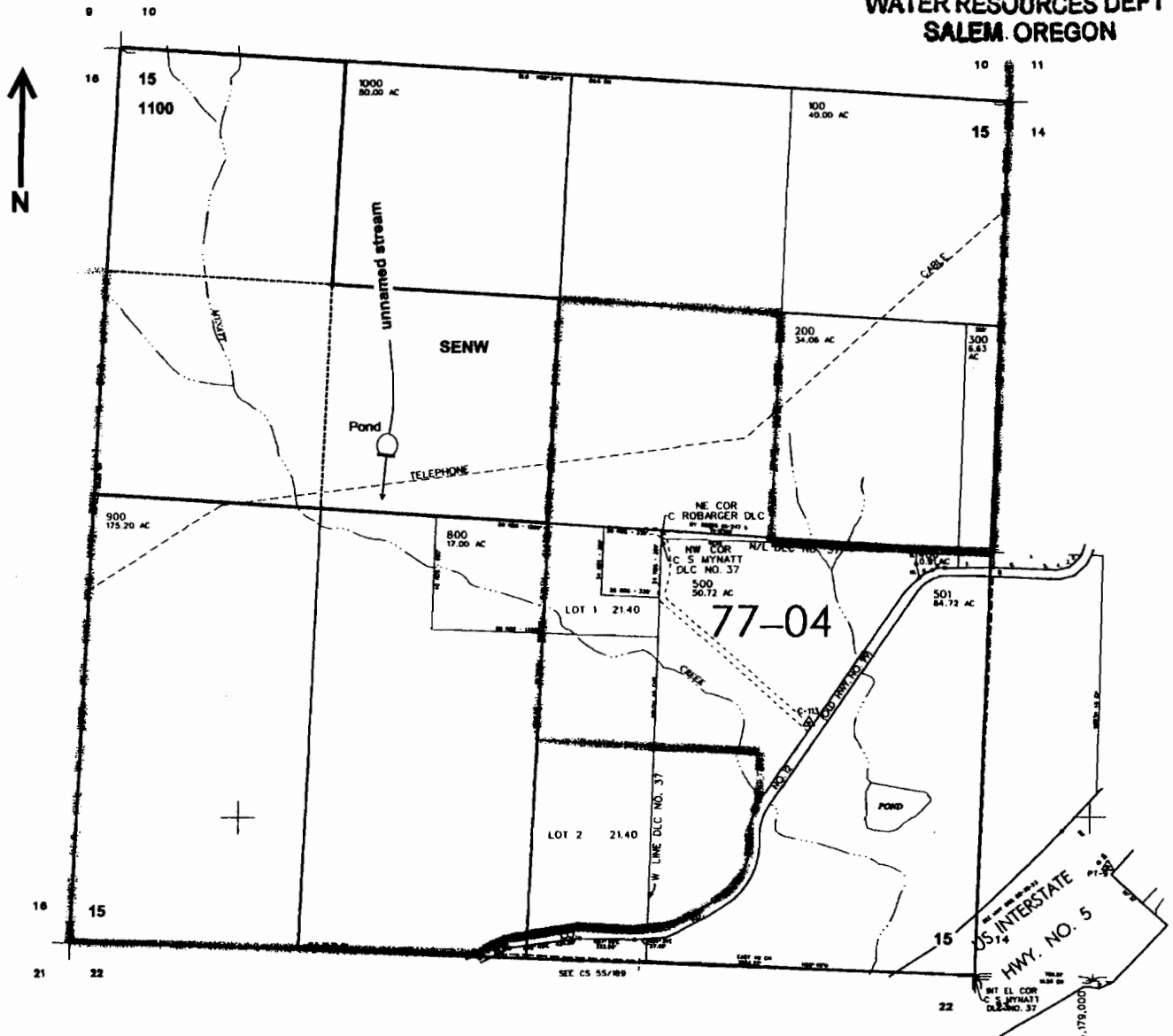
SEC. 15 T.32S. R.5 W. W.M.
DOUGLAS COUNTY

Scale: 1" = 1000'

RECEIVED

JAN 14 2008

WATER RESOURCES DEPT
SALEM, OREGON



Dam is located 350 ft. N. and 960 ft. W. from the center of Sec. 15

RECEIVED

DEC 04 2008

WATER RESOURCES DEPT
SALEM, OREGON

AppNo P 87066 Permit No R 14600