

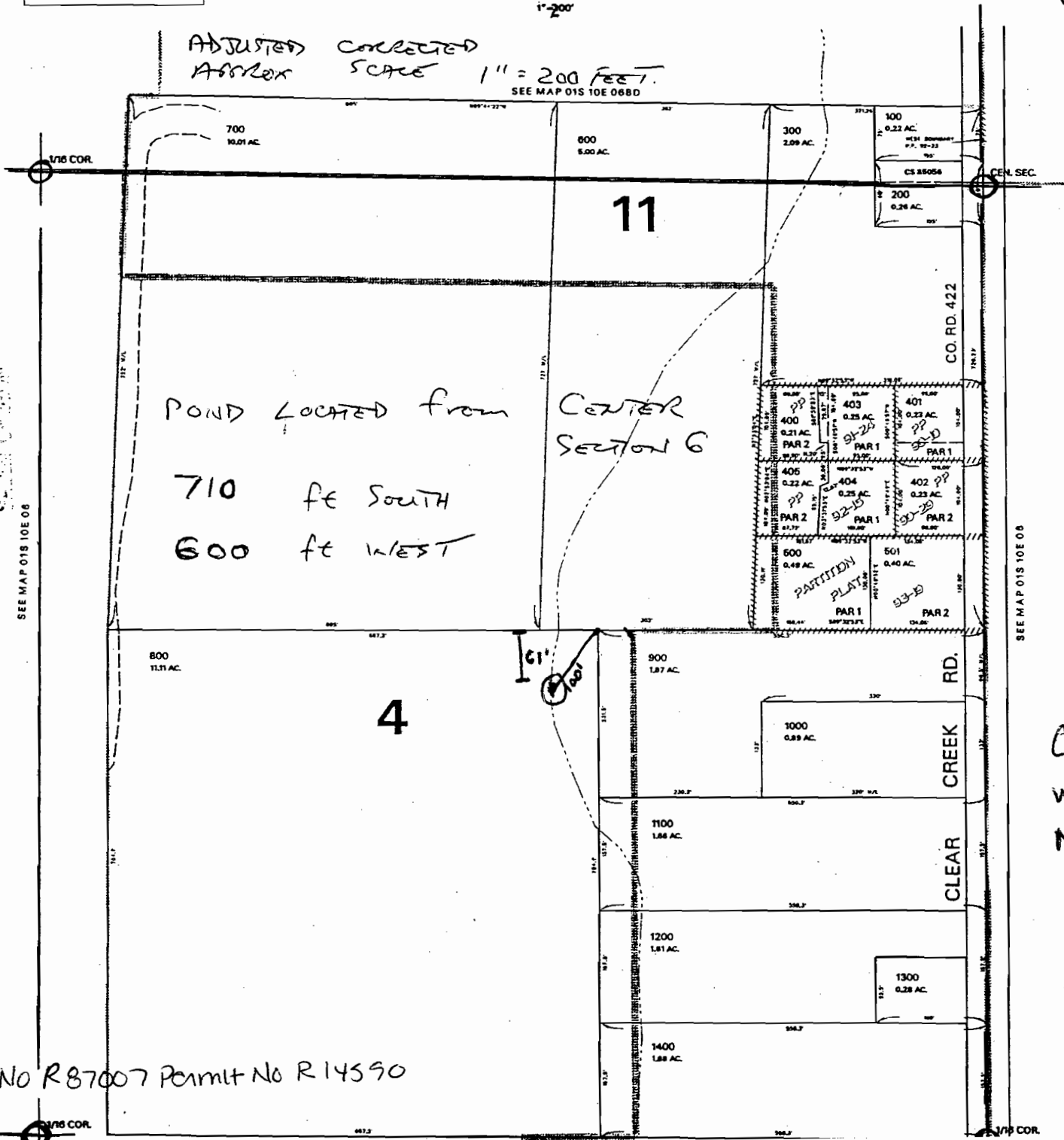
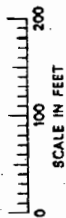
NE1/4 SW1/4 SECTION 06 T.01S. R.10E. W.M.
HOOD RIVER COUNTY

01S 10E 06CA

THIS MAP WAS PREPARED FOR
ASSESSMENT PURPOSE ONLY

1"=200'

ADJUSTED COLLECTED
Assessor SCALE 1" = 200 FEET.
SEE MAP 01S 10E 06BD



RECEIVED

MAY 11 2000

WATER RESOURCES DEPT
SALEM OREGON

SEE MAP 01S 10E 06

SEE MAP 01S 10E 06

RECEIVED

App No R87007 Permit No R14590

Center of reservoir
will be 100ft. from
NE corner of tax
lot 800 and 61f
south of the
north line of
tax lot 800
or
see attached
exhibit A

REVISED: JD
01/23/03