

SECTION 14 T.27S. R.6W. W.M.
DOUGLAS COUNTY

REVISED ON
8-23-95

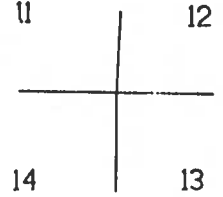
NW
27 6 14
& INDEX
ROSEBURG

1"=400'

RECEIVED

JUL 30 1996

WATER RESOURCES DEPT.
SALEM, OREGON



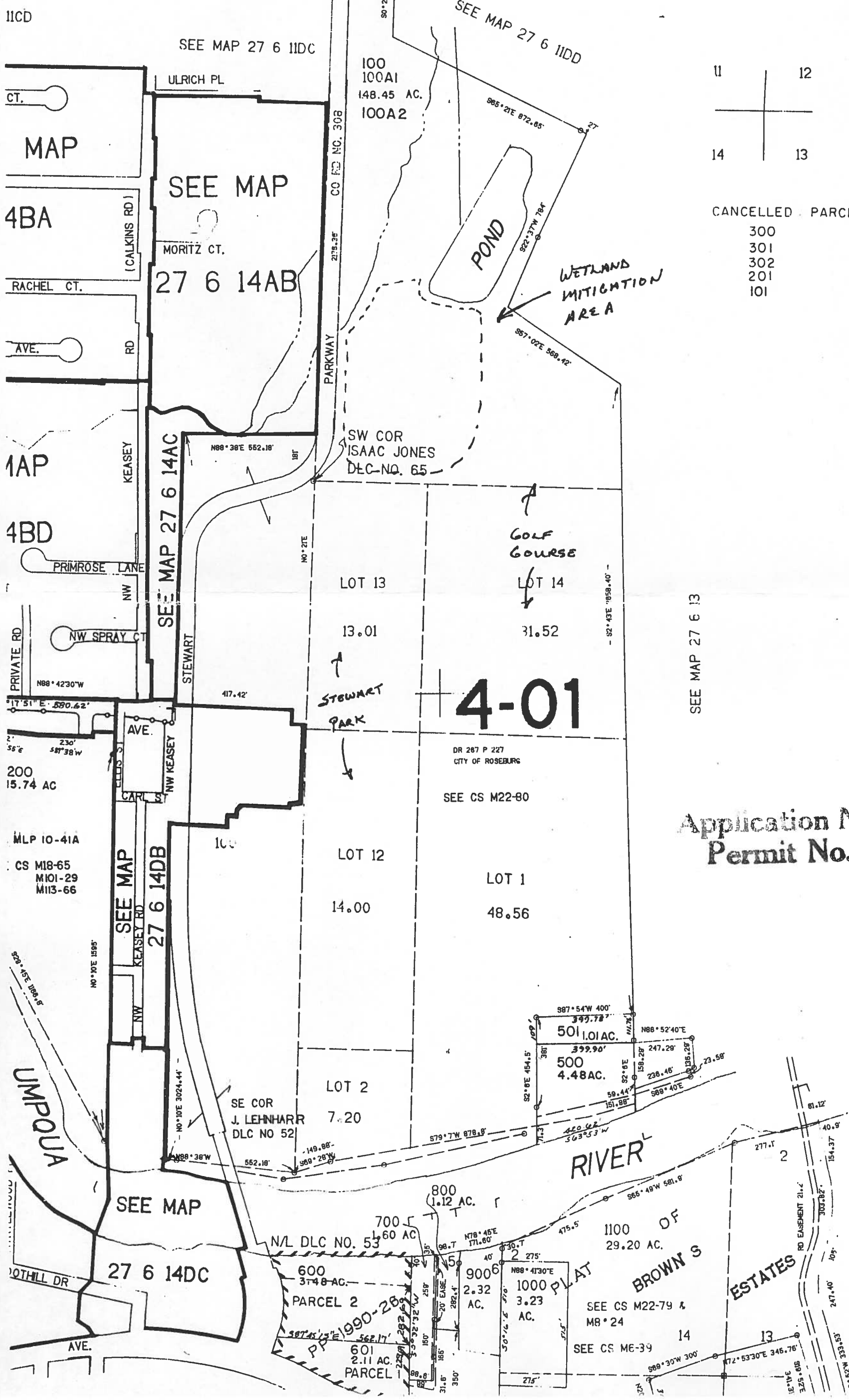
CANCELLED PARCEL NO.'S.

- 300
- 301
- 302
- 201
- 101

WATER RESOURCES DEPT.
SALEM, OREGON

AUG 19 1996

RECEIVED



4-01

SEE MAP 27 6 13

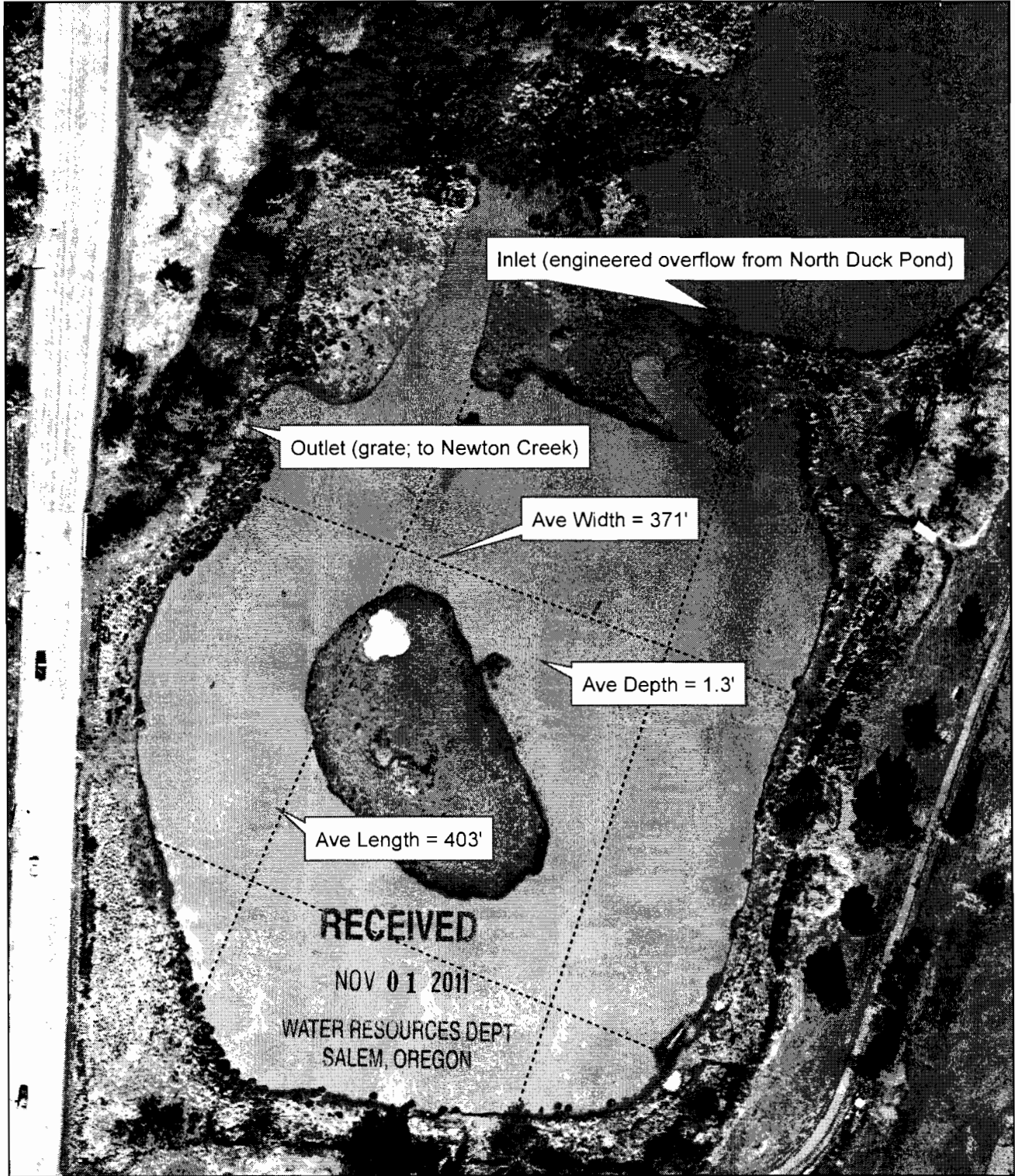
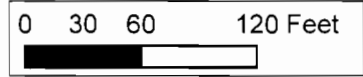
580.000

Application No. *R-81555*
Permit No. ~~R12213~~
R12239

SEE MAP 27 6 13CC

NW
27 6 14

S. Duck Pond - Ap# R-81555; Per# R-12239



Water Resources Department
The following information was obtained from the
aerial photograph of the pond area on 11/01/2011.
The pond area is approximately 371 feet wide and
403 feet long. The average depth of the pond is
1.3 feet. The inlet is an engineered overflow from
North Duck Pond. The outlet is a grate that discharges
to Newton Creek. The pond area is located at the
intersection of the following streets: [illegible]
[illegible] and [illegible]. The pond area is
approximately [illegible] feet from the [illegible] street.

