

SE 1/4 SEC. 29 T28S R14W W.M.  
COOS COUNTY

28S 14W 29D

CANCELLED NO.

- 1000
- 100
- 200
- 300
- 1200
- 801

THIS MAP WAS PREPARED FOR ASSESSMENT PURPOSE ONLY

1" = 200'  
SEE MAP 28 14 29A

RECEIVED

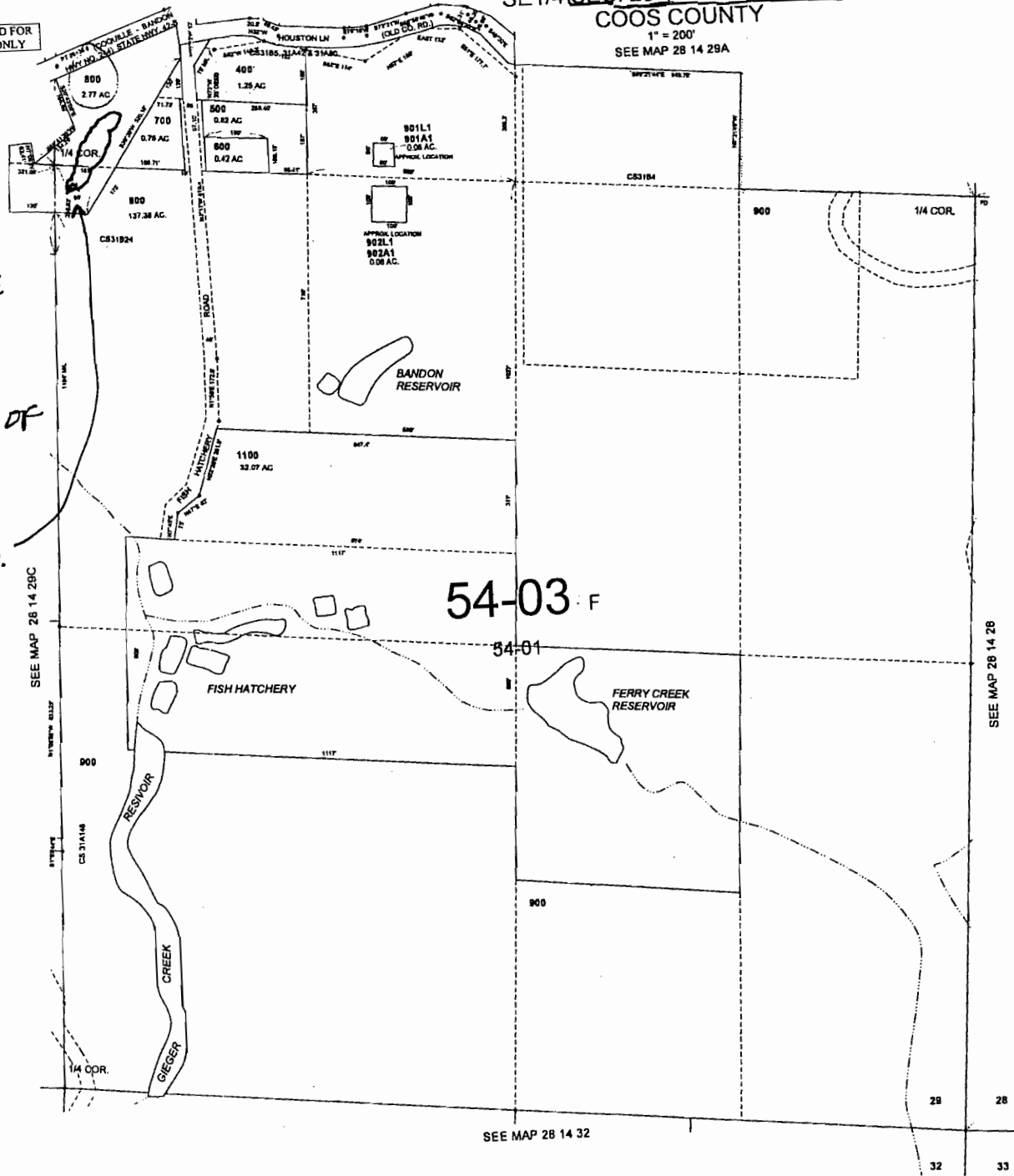
JAN 28 2011

WATER RESOURCES DEPT  
SALEM, OREGON

POND IS 250'  
EAST, AND ON  
THE CENTER LINE  
OF SEC. 29.

\* EAST OF CENTER OF  
SEC. 29.

ALL ON TL 800.



**RECEIVED**  
 APR 14 2008  
 WATER RESOURCES DEPT  
 SALEM, OREGON

App No R 87143

MAP FILED IN CASE NO. 2008-00000000

SEE MAP 28 14 32

SEE MAP 28 14 28

06-27-2007  
28S 14W 29D