

1E. W.M.

RESERVOIR LOCATED FROM  
NE CORNER SECTION 17  
440 ft SOUTH  
460 ft WEST

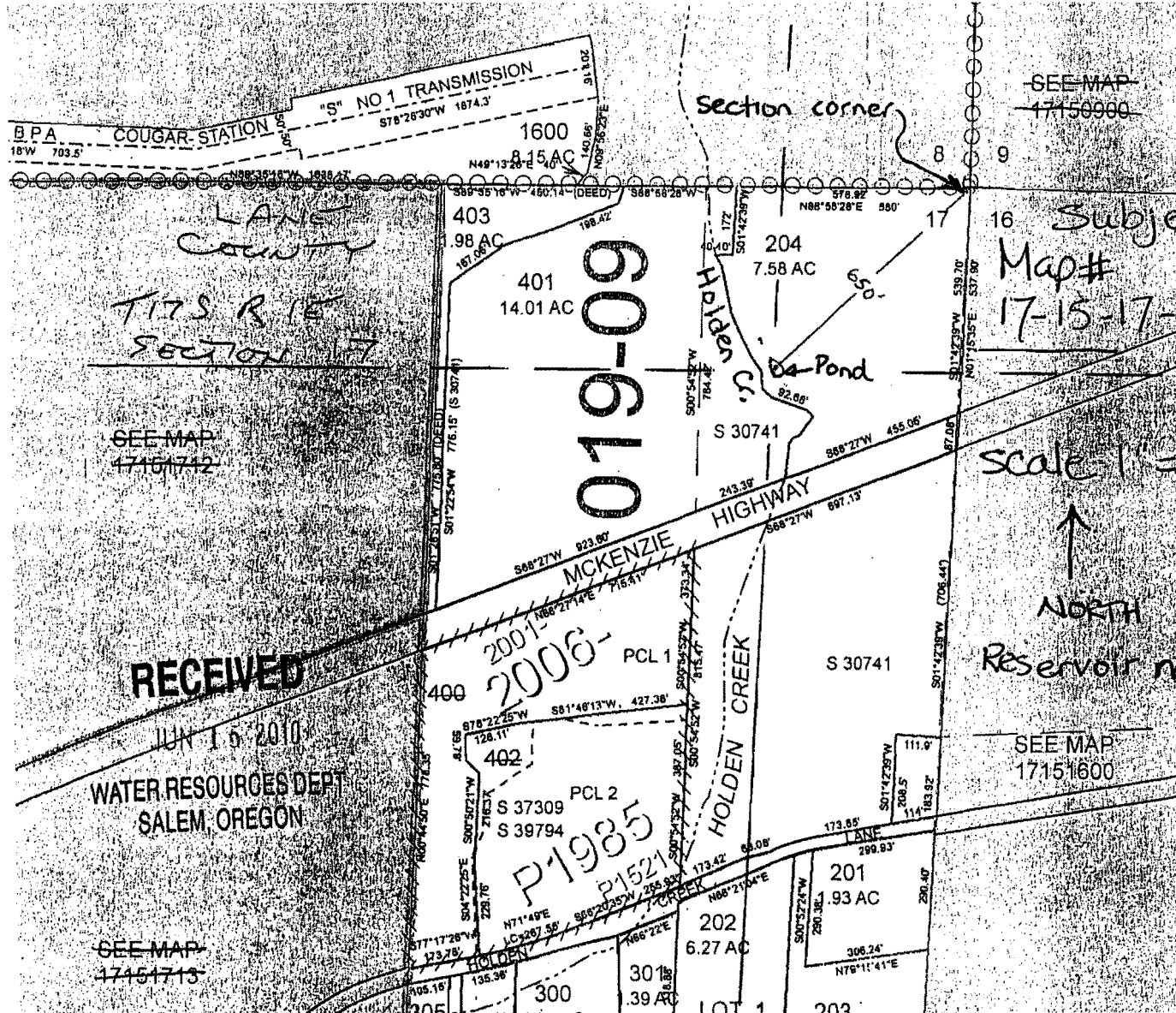
17151700

GIS DATA  
3/20/2009 11:52:54 AM : lcatjxg

CANCELLED:

- 1200
- 1201
- 1300
- 1400
- 1401
- 1500
- 400
- 402
- 500
- 501
- 502
- 503
- 600
- 700
- 701
- 702
- 703
- 800
- 801
- 802

02928-2



Subject property  
Map#  
17-15-17-00-00204

scale 1" = 400'



Reservoir name: N/A

019-09

RECEIVED

JUN 15 2010

WATER RESOURCES DEPT  
SALEM, OREGON

SEE MAP  
17451715

SEE MAP  
17151600

DEC 17 2010