



Section No. R-81190
R12086

RECEIVED
JUL 31 2012

1680

RECEIVED

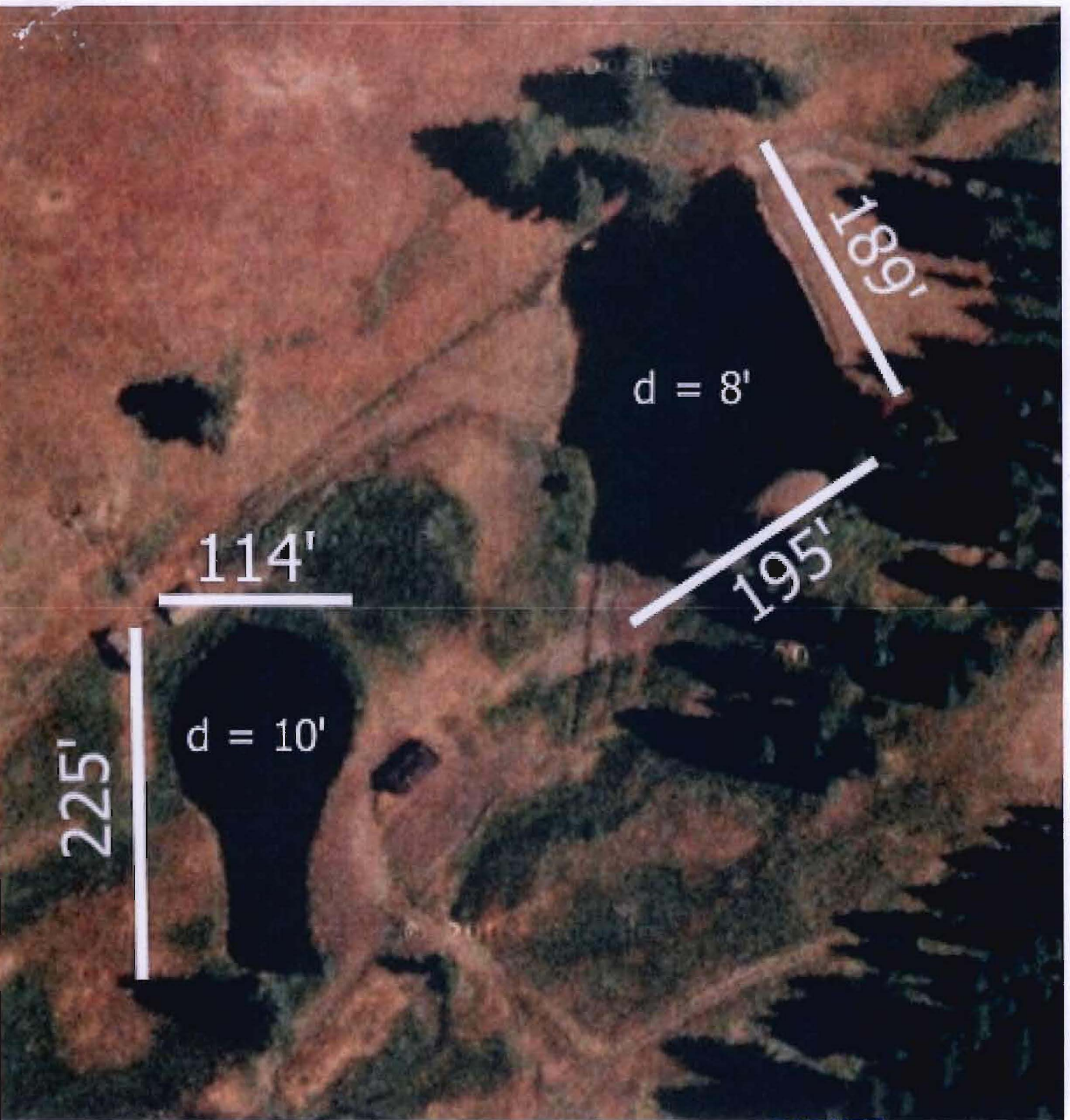
JUL 31 2012

SHERIFFS OFFICE DE
SALEM, OREGON

McL... Co

7 8
18 17

1680



Pond Calculations

RECEIVED

JUL 31 2012

WATER RESOURCES DEPT
SALEM, OREGON

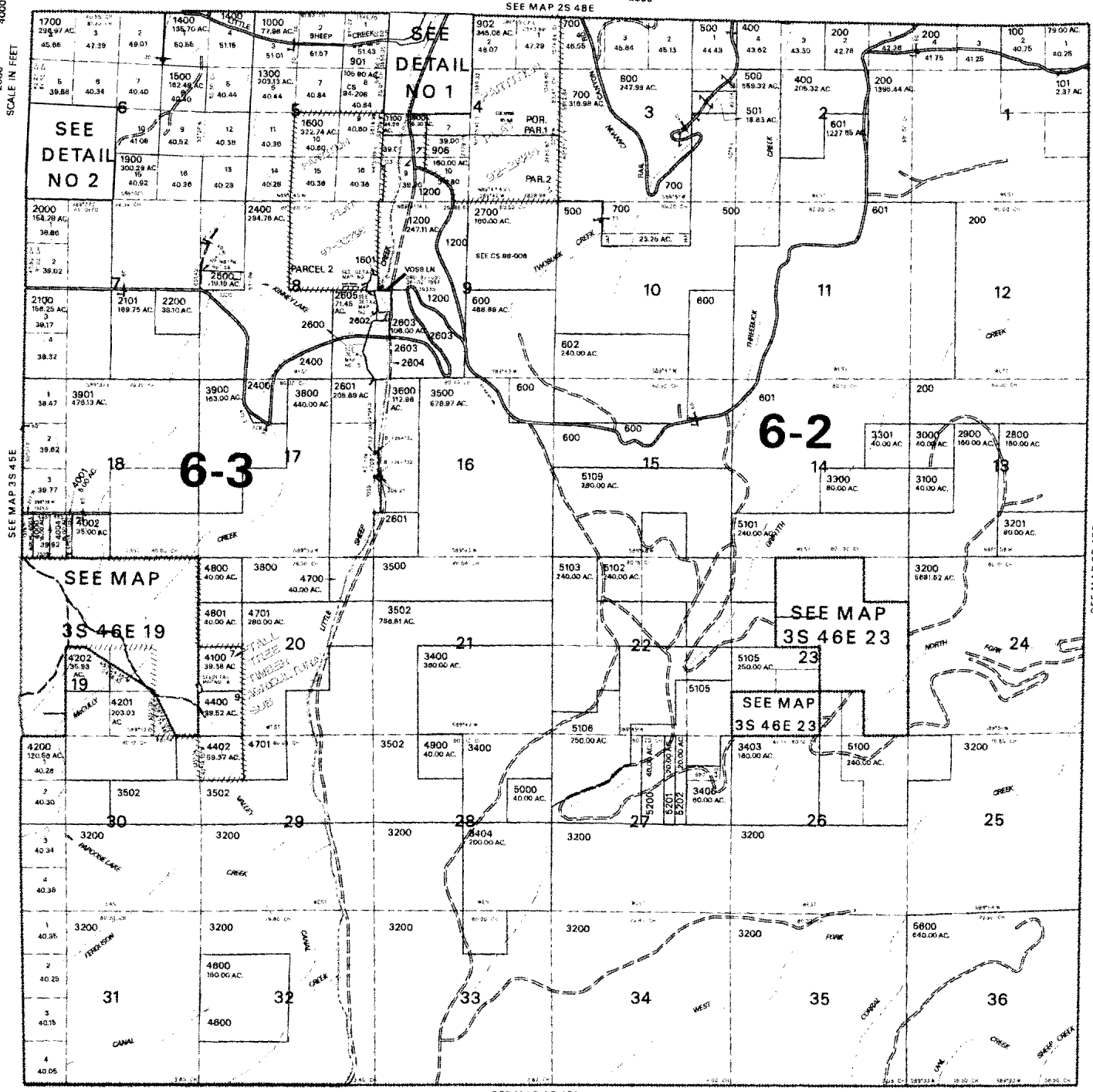
Width	Length	% Actual Pond	Sq Ft	Size (acres)	Depth	Volume (acre-ft)
189	195	85%	31326.8	8/9	8	7.30
114	225	65%	16672.5	1/2	10	4.86

THIS MAP WAS PREPARED FOR
ASSESSMENT PURPOSE ONLY

T.03S. R.46E. W.M.
WALLOWA COUNTY

1" = 2000'

0 2000 4000
SCALE IN FEET



03S 46E
& INDEX

- CANCELLED NO.
- 300
 - 1701
 - 1804
 - 2300
 - 3401
 - 3402
 - 3405
 - 3501
 - 3601
 - 3700
 - 3801
 - 4101 THRU
 - 4111
 - 4300
 - 4401
 - 4500
 - 5104
 - 5107
 - 5108
 - 5110
 - 5300 THRU
 - 5306
 - 5500

PRINTED ON
02/25/13

03S 46E
& INDEX