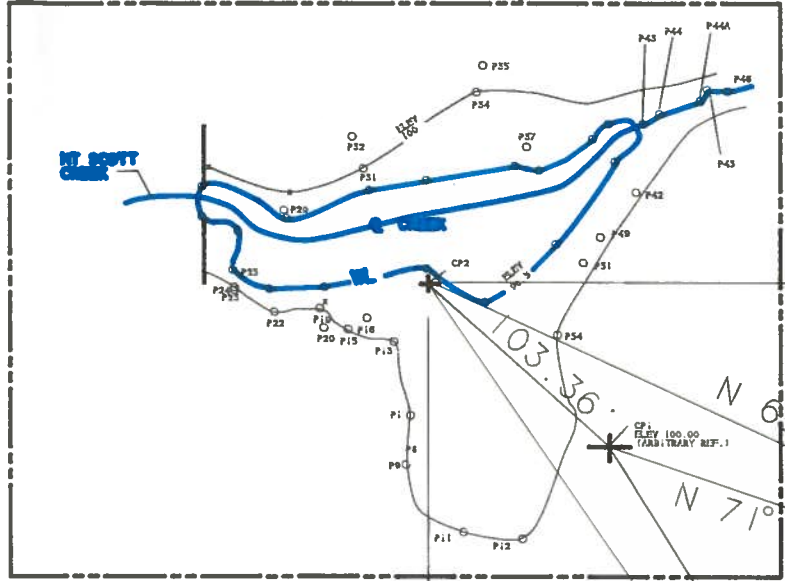


N 00° 58' 00" 370.10'
TO N. W. PROPERTY CORNER

RECEIVED
AUG 30 1996
WATER RESOURCES DEPT.
SALEM, OREGON

Application No. 2-81476
Permit No.

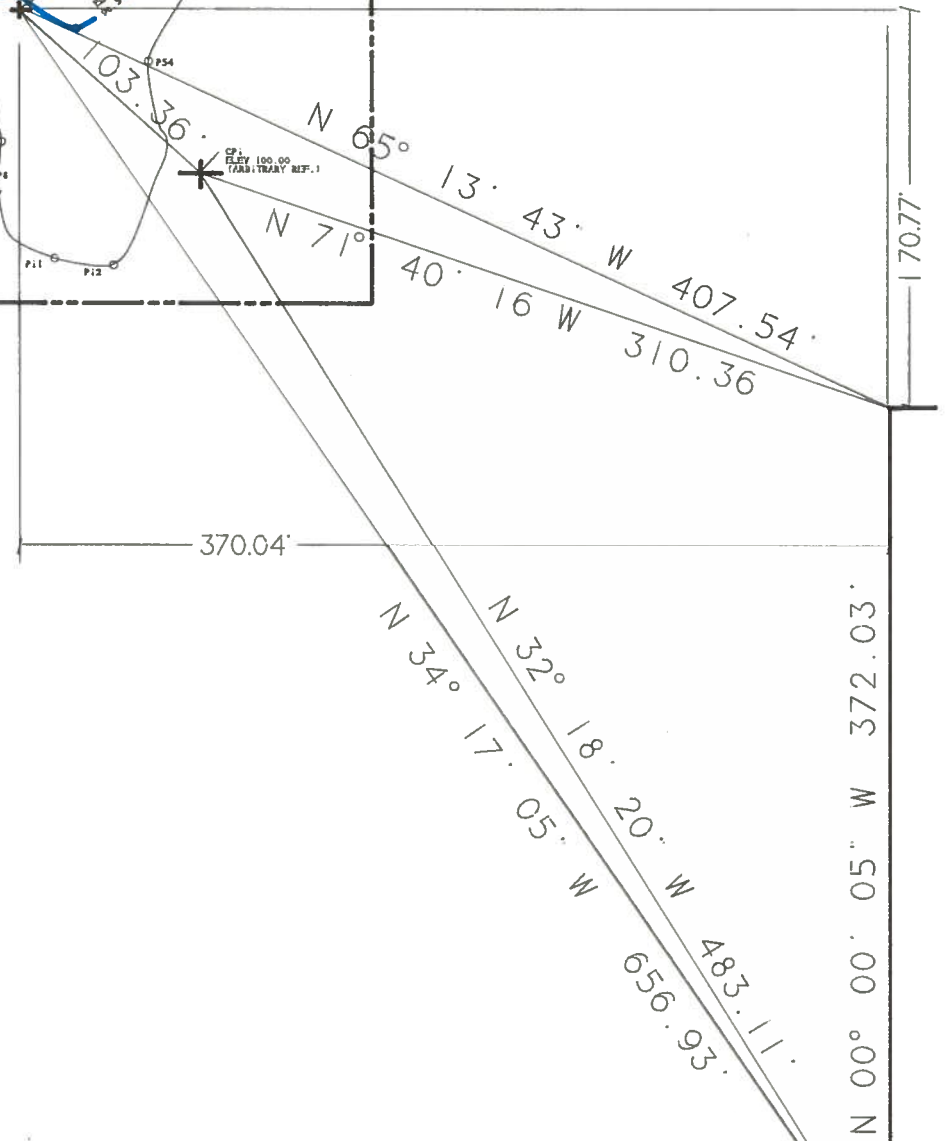
SEE DWG 9012-93Y1 FOR ENLARGEMENT



S 89° 38' 00" W
16.50'

N 00° 58' 00" W 378.63'

S.W. CORNER OF TAX LOT 2800 (1 2E 26D)
LOCATED IN THE S.E. 1/4 SEC. 26. AND THE
S.W. 2/4 SEC. 25. T.1.S. R. 2E. W.M.
CLACKAMAS COUNTY, OREGON
BOUNDARY SURVEY VERIFICATION BY DENALI
ENGINEERING (REF FEE NO. 80-27424
NOVEMBER 21, 1995.



S 89° 35' 40" W 1122.21'

CITY OF HAPPY VALLEY
PARKS DEPARTMENT

WILDLIFE PARK POND

Dwn VOS 8/4/96 Dwg 9012-93Y Rev 0

SEE

AVEN

SEE MAP I 2E 26CA

2E

26DB

SEE

MAP

12-149

DRIVE
PLOVER
DRIVE

WARBLER PLACE

WILLET DRIVE

2E

26DA

DUNLIN DRIVE

CREEK

S.E. MEADOWPARK DRIVE

SE 134TH AVE

2700
2700EI
9.97 Ac.
Sec. P.S. 4632

S.E. 134TH AVE

AVENUE

PARKWOOD WAY

S.E.

SE PARKSIDE DRIVE

SEE

MAP

2800
17.25 Ac.

Sec. P.S. 49A

Pond Area
20,000 sf +/-

N 89° 35' 40" E
585.49'

2E

26DC

SCOTT

2802
7.66 Ac.

2801
5.00 Ac
10151

2500
10.14 Ac.

2900
3.40 Ac.
14095

3001
8.04 Ac.
13865 A - ELEM.
13865 B - MID.

2300
4.26 Ac.
10300

SEE

MAP

RECEIVED BY OWD

MAR 04 2013

SALEM, OR

2E

26DD

COURT

N.L.A
RUSSA
ADDIT

10

T. LINE
UCBEN
ALLE

P I 2E 26 CD

RECEIVED BY OWD

MAR 04 2013

SALEM, OR

2400
1.26 Ac.
13395

567° 43' 28" E
189.08
583° 37' 19" W
61.12