

2500  
2400  
2100

OND  
10  
100.00Ac

5-3

4800  
40.00Ac.

4801  
40.00Ac.

4100  
4111  
SEE  
INSERT  
TALL TREE JIMBER AG SUB

4402  
4701

3502

20

4701

3502

2602  
2605  
71.45Ac.

2600  
2603  
12.63ac.

2601  
205.69Ac.

2601

2601

4701  
40.00Ac.

4701  
280.00 Ac.

3502

3502

3502

1200

2603  
106.00Ac

3500  
578.97 Ac.

16

2601

3500

3502  
796.81 Ac.

3400  
360.00 ac.

4900  
40.0Ac.

3400

SALEM, OR

AUG 20 2012

RECEIVED BY OWRD

5000  
40.0Ac.

TWOBUCK

RAIL

10

5.89°47'W.  
80.50ch.

600

15

5.89°42'W.  
80.16 ch.

5102  
240.00 Ac.

22

5105  
260.00 Ac.

5106  
250.00 Ac.

5200  
4000  
Ac.

THREEBUCK

11

West  
80.13 ch.

3301  
40.00Ac

3300  
80.00 Ac.

West  
80.20 ch.

5302  
40.00 ac.

5303  
40.00 ac.

5300  
6.05 ac

5301  
55.15 ac.

West  
80.10 ch.

5100  
240.00Ac.

5108  
2.85 Ac.

3301  
40.00Ac

5400  
120.0a

510  
40.00 Ac.

5500  
40.0Ac.

3405  
40.00 Ac.

5100  
240.00Ac.

NORT

**RECEIVED**

OCT 06 1994

WALLOWA COUNTY

SEE MAP 25 46

CANCELLED NO. **35 46**  
 300 4500  
 1701 5104  
 1804 5107  
 2300 5304  
 3401 5305  
 3402  
 3601  
 3700  
 4101 THRU  
 4111  
 4300  
 4401

**RECEIVED**

MAR 29 2000

UNITED STATES DEPT. OF THE INTERIOR

INSERT  
 PARCEL 2602  
 1"=400'  
 VOSS LN.  
 2602  
 2.23 AC.

SEE V.J. RUSSELL  
 SURVEY 11-9-1963  
 INSERT  
 PARCEL 1601  
 1"=400'  
 1601  
 2.18 AC.

VOSS LN.  
 3201  
 80.00 AC.

SEE MAP 35 47  
 INSERT  
 SEC. 20  
 PARCEL 4100  
 1"=200'

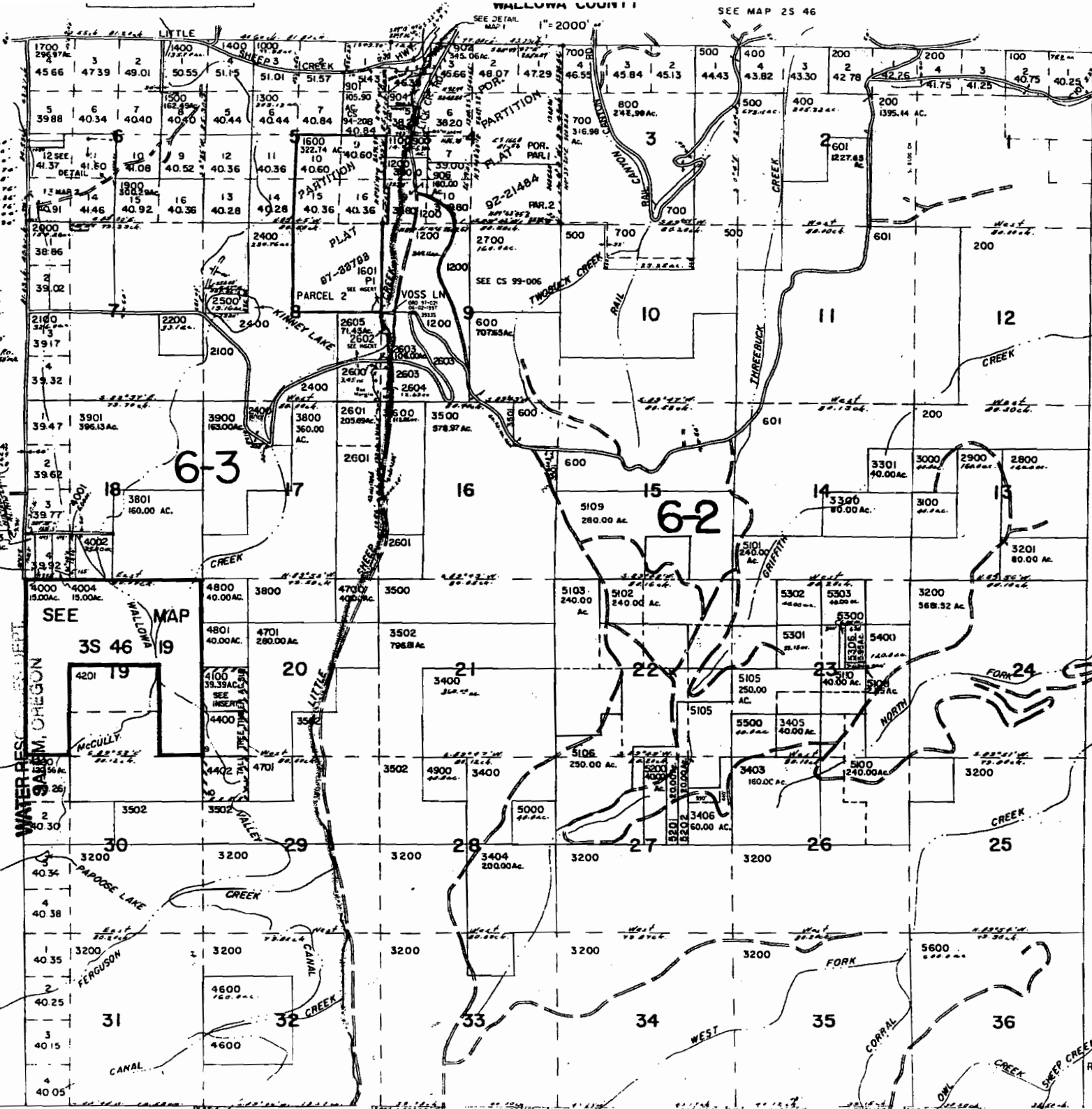
4100

Scale: 0 2000 FEET  
 Application No. P-84393  
 Permit No.

SCALE 1:48000

Revised 8/10/99, CS

3S 46



Sec 6-3  
 1-380°10'W 440.0'  
 2-109°17'W 420.0'  
 3-133°00'W 371.1'  
 4-111°10'W 430.1'  
 5-140°45'W 511.7'  
 6-121°45'W 424.8'  
 7-120°00'W 437.1'  
 8-100°00'W 438.90'

TL 2604  
 Sec 8-9  
 1-300°10'W 410.0'  
 2-109°17'W 420.0'  
 3-133°00'W 371.1'  
 4-111°10'W 430.1'  
 5-140°45'W 511.7'  
 6-121°45'W 424.8'  
 7-120°00'W 437.1'

DETAIL  
 TL 2600  
 (After Sep of 2604)  
 1-300°10'W 410.0'  
 2-109°17'W 420.0'  
 3-133°00'W 371.1'  
 4-111°10'W 430.1'  
 5-140°45'W 511.7'  
 6-121°45'W 424.8'  
 7-120°00'W 437.1'

SEE MAP  
 3S 46  
 19

McCULLY  
 4400

PARADISE LAKE  
 3200

FERGUSON  
 3200

CANAL  
 4600