

TRANSFER T-7067 FINAL DRAWING

This drawing has been prepared in accordance with the items listed on the letter dated May 18, 2004 to Lester E. Fultz, CWRE #051 and Steven F. Kellow in reference to the subject Transfer written by Dorothy I. Pedersen, Water Rights Specialist. The first drawing was received by the Water Resources Department on June 29, 2004. Their review found some discrepancies in the drawing. Mr. Fultz met with WRD representative in Salem. The discrepancies were corrected by the following items:

1. The CWRE made measurements from the Record 1/16th corner to all Uses. These Measurements for both Old & New Uses are shown on the drawing.
2. The former Stock Use is no longer in force. All Uses are domestic uses.
3. The drawing was revised to show the correct location of Highway 22, Three Rivers, The access roadway, Lawrence Creek, the Old Stock use & the 2-Domestic Uses.
4. the corrections made in Item No. 3 shows the correct location of Highway 22 & Three Rivers.
5. The boundary lines & the Tax Lots are shown on the new drawing.
6. The location of the Old Authorized Stock Use is shown on the drawing.
7. The Expiration Date for the license for the CWRE is shown on the drawing.

The domestic Uses are in Section 32, Township 4 South, Range 9 West of the Willamette Meridian, Tillamook County, OR

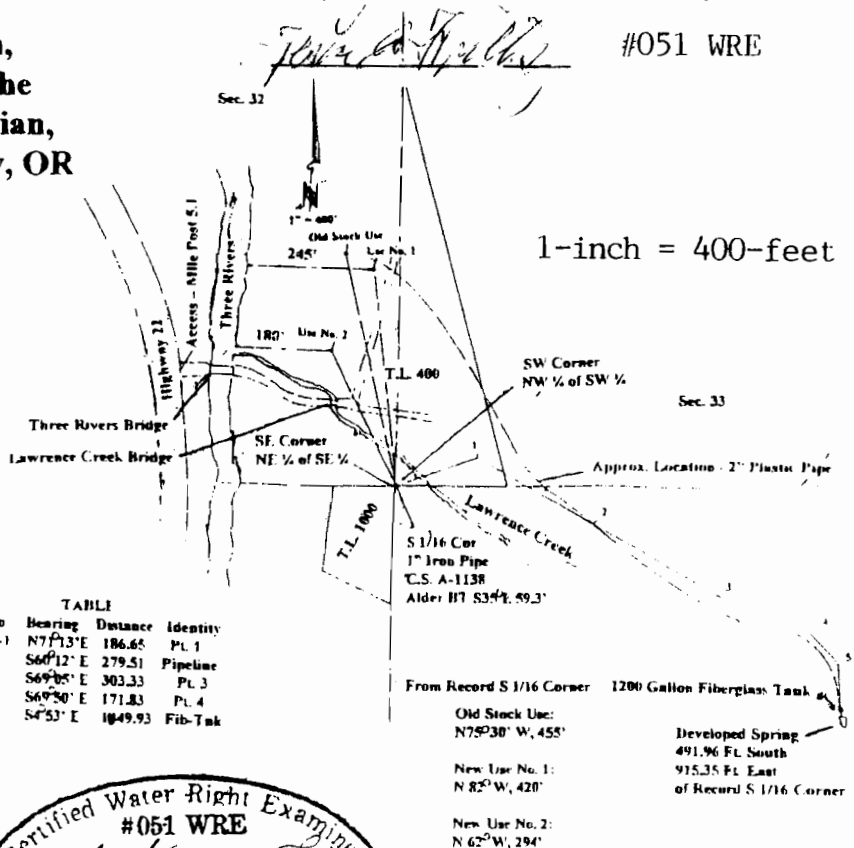
This map illustrates all details to confirm the Claim For Beneficial Use. November 8, 2005

NOTES:

1. The water source is a well developed, un-named spring flowing into Lawrence Creek, a tributary of 3 Rivers, Tillamook County, Oregon.

2. The water flows from the spring via a protected pipe to a 1200 gallon fiberglass storage tank. The tank has a cover, a drain & overflow pipes with valves.

3. The bearing for this survey was established by sighting the center of the tag & using the record bearing on the tag.



This drawing is for water purposes.
It is not a survey map.

RECORDED

EXP. 12-31-05