

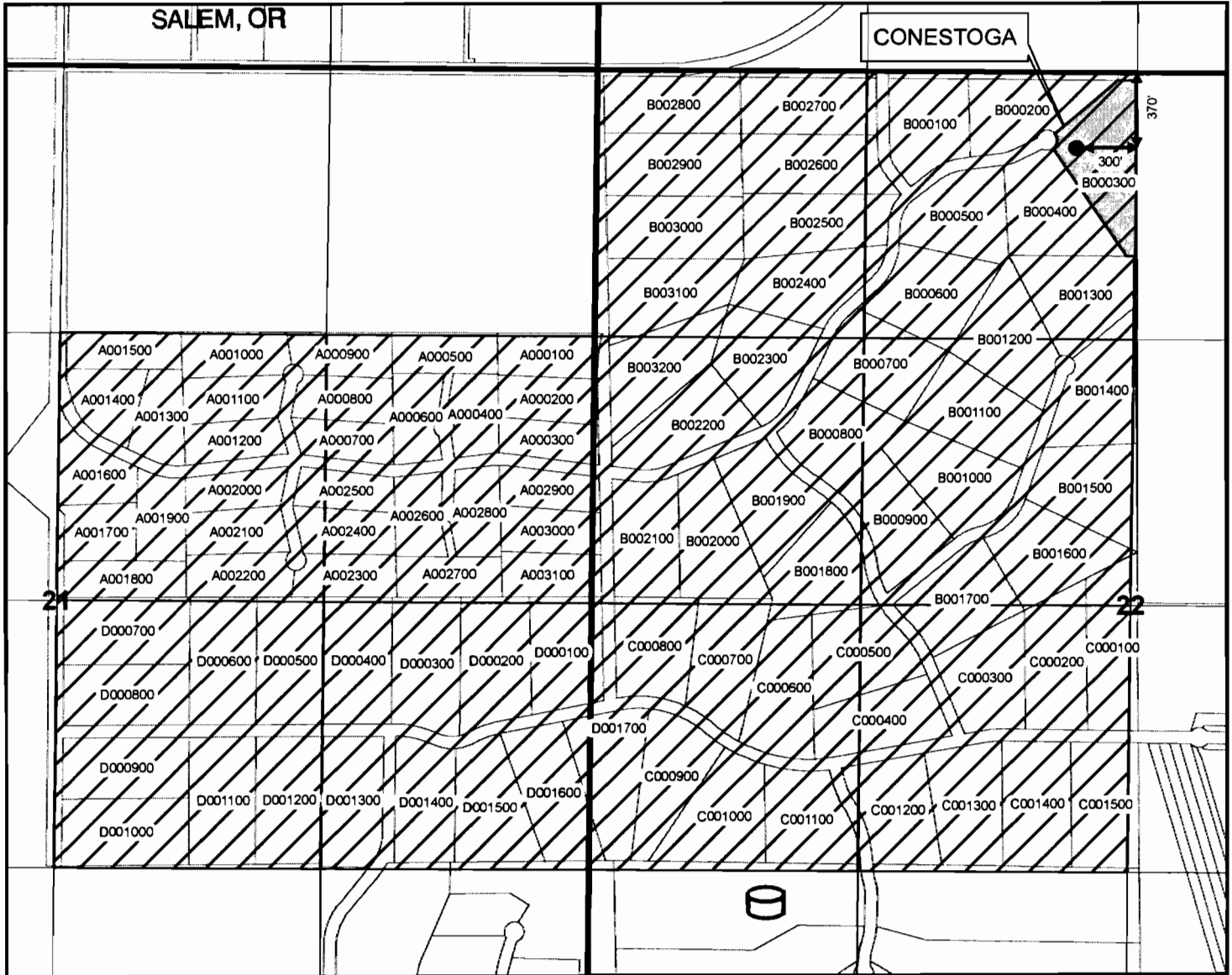


AVION WATER CO, INC.
RECEIVED BY OWRD CLAIM OF BENEFICIAL USE - WELL LOCATION
AND PLACE OF USE MAP

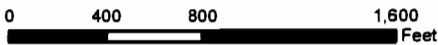
Application G-10208, Permit G-16949
 Deschutes County

MAR 06 2013

T18S R13E



1 inch = 800 feet



DRAWN BY: TANNER LEMMON
 AVION WATER GIS DEPARTMENT
 JULY, 2009

DISCLAIMER:

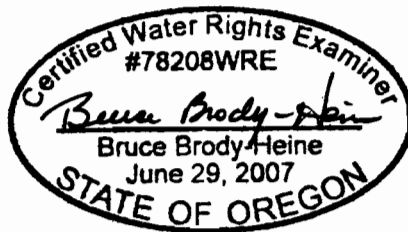
This map was prepared for the purpose of identifying the location of water rights only and is not intended to provide legal dimensions or locations of property ownership lines.

Legend

- POINT OF APPROPRIATION
- ▨ PLACE OF USE
- WELL SITE
- - MAINLINES
- RESERVOIR (125,000 gal)

WELL DESCRIPTION

CONESTOGA (WELL R) -
 NE 1/4, NW 1/4 of
 Section 22, T 18 S, R 13 E,
 WM - 370' South and 300'
 West from the N 1/4 corner of
 Section 22
 Taxlot - 181322B000300



EXPIRES: 12-31-13

NOTES:

Measuring devices:
 Refer to Attachment 3

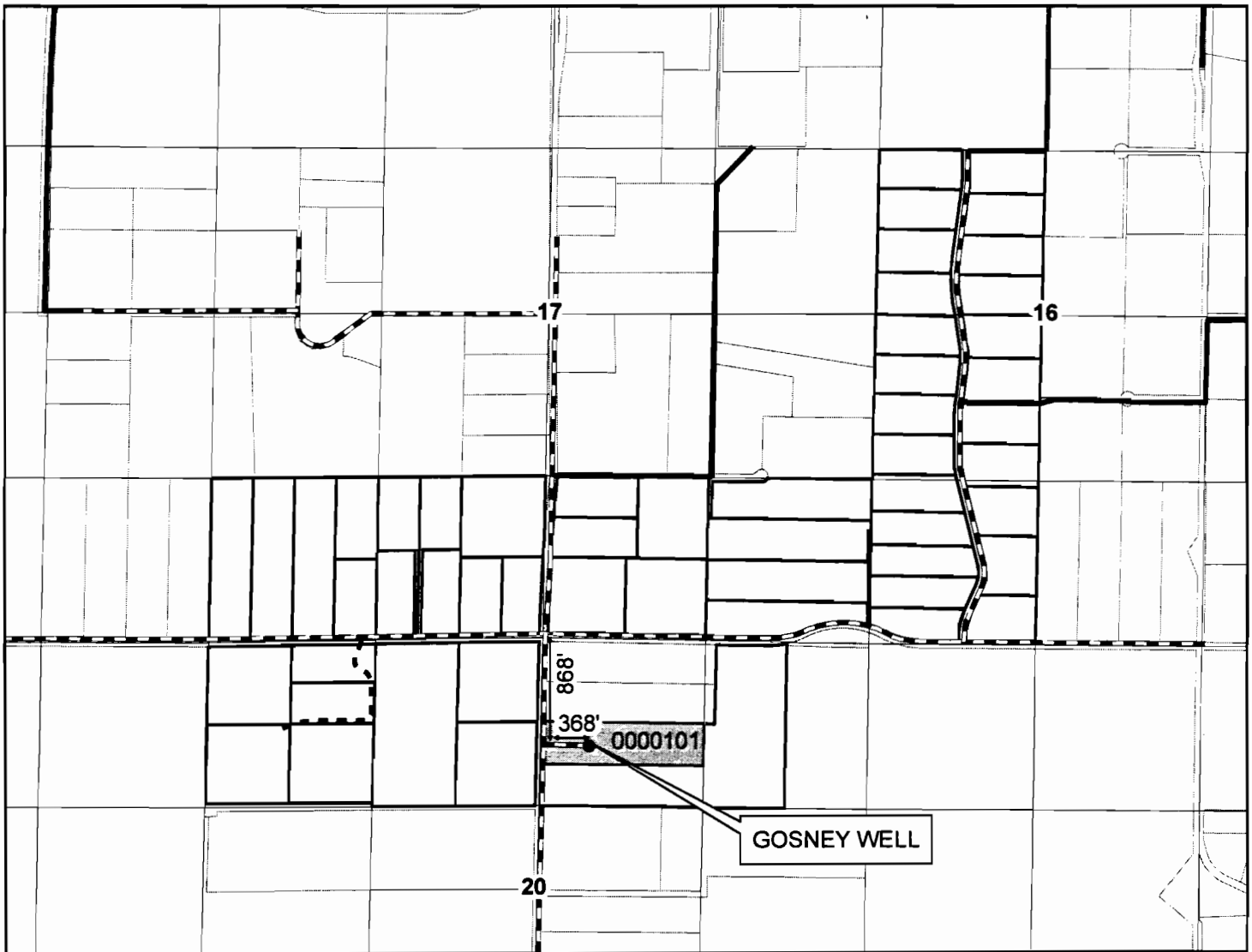
Base Layer:
 Deschutes County Taxlot Shapefile
 Projected Coordinate System :
 NAD 1983 StatePlane Oregon South
 Geographic Coordinate System :
 GCS North American 1983



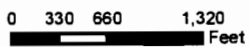
AVION WATER CO, INC.

CLAIM OF BENEFICIAL USE
Application G-10208, Permit G-16949
T18S, R13E, W.M., Sections 16, 17 & 20
Deschutes County

1813



1 inch = 1,320 feet



DRAWN BY: TANNER LEMMON
AVION WATER GIS DEPARTMENT
JANUARY, 2013

DISCLAIMER:

This map was prepared for the purpose of identifying the location of water rights only and is not intended to provide legal dimensions or locations of property ownership lines.

- WELL
- 2" MAINLINE
- - - 3" MAINLINE
- ▨ 4" MAINLINE
- ▨ 8" MAINLINE
- ▨ WELL SITE

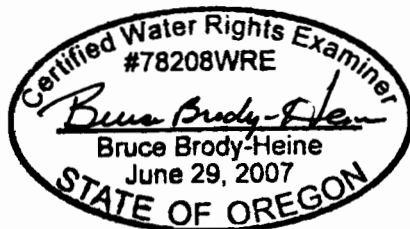
WELL DESCRIPTION

GOSNEY WELL -
NW 1/4, NE 1/4 of
Section 20, T 18 S, R 13 E,
WM - 868' South and 368'
East from the N 1/4 corner of
Section 20

Taxlot - 1813200000101
RECEIVED BY OWRD

MAR 06 2013

SALEM, OR



EXPIRES: 12-31-13

NOTES:

Measuring Devices:
Gosney Well - refer to
Report Section 2 and
Attachment 3 of this report.

Base Layer:
Deschutes County Taxlot Shapefile
Projected Coordinate System :
NAD 1983 StatePlane Oregon South
Geographic Coordinate System :
GCS North American 1983



AVION WATER CO, INC.

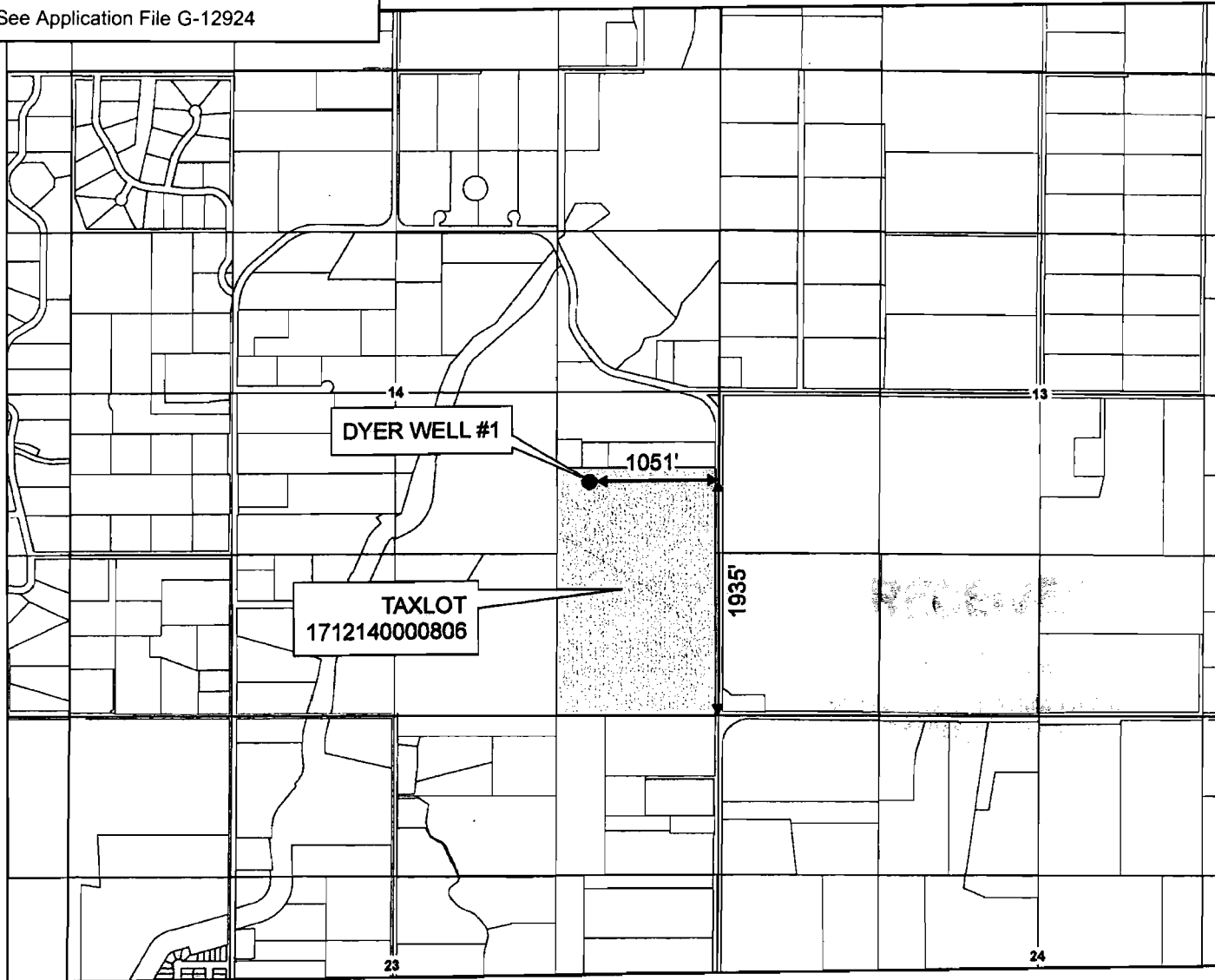
CLAIM OF BENEFICIAL USE - WELL LOCATION MAP

1 of 6

Application G-12924, Permit G-12788
Permit Amendments T-7778; T-10407
Deschutes County

FOR ORIGINAL POLYESTER FILM MAP
See Application File G-12924

T17S R12E



1 inch equals 1,320 feet



DRAWN BY: TANNER LEMMON
AVION WATER GIS DEPARTMENT
MARCH, 2008

DISCLAIMER:
This map was prepared for the purpose
of identifying the location of water rights
only and is not intended to provide legal
dimensions or locations of property
ownership lines.

Legend

- POINT OF APPROPRIATION
- WELL SITE

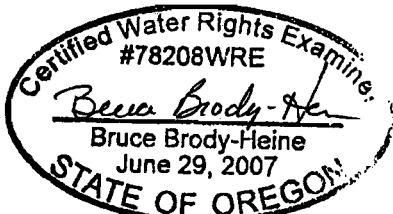
WELL DESCRIPTION

DYER WELL # 1 -
NE 1/4, SE 1/4 of
Section 14, T 17 S, R 12 E,
WM - 1935' North and 1051'
West from the SE corner of
Section 14
Taxlot - 1712140000806

RECEIVED BY OWRD

MAR 06 2013

SALEM, OR



EXPIRES: 12/31/09

NOTES:

Measuring devices:
Refer to Attachment 6

Conveyance System:
Refer to the overview map in
Attachment 1

Base Layer:
Deschutes County Taxlot Shapefile
Projected Coordinate System :
NAD 1983 StatePlane Oregon South
Geographic Coordinate System :
GCS North American 1983



RECEIVED BY OWRD

AVION WATER CO, INC.

CLAIM OF BENEFICIAL USE - WELL LOCATION MAP

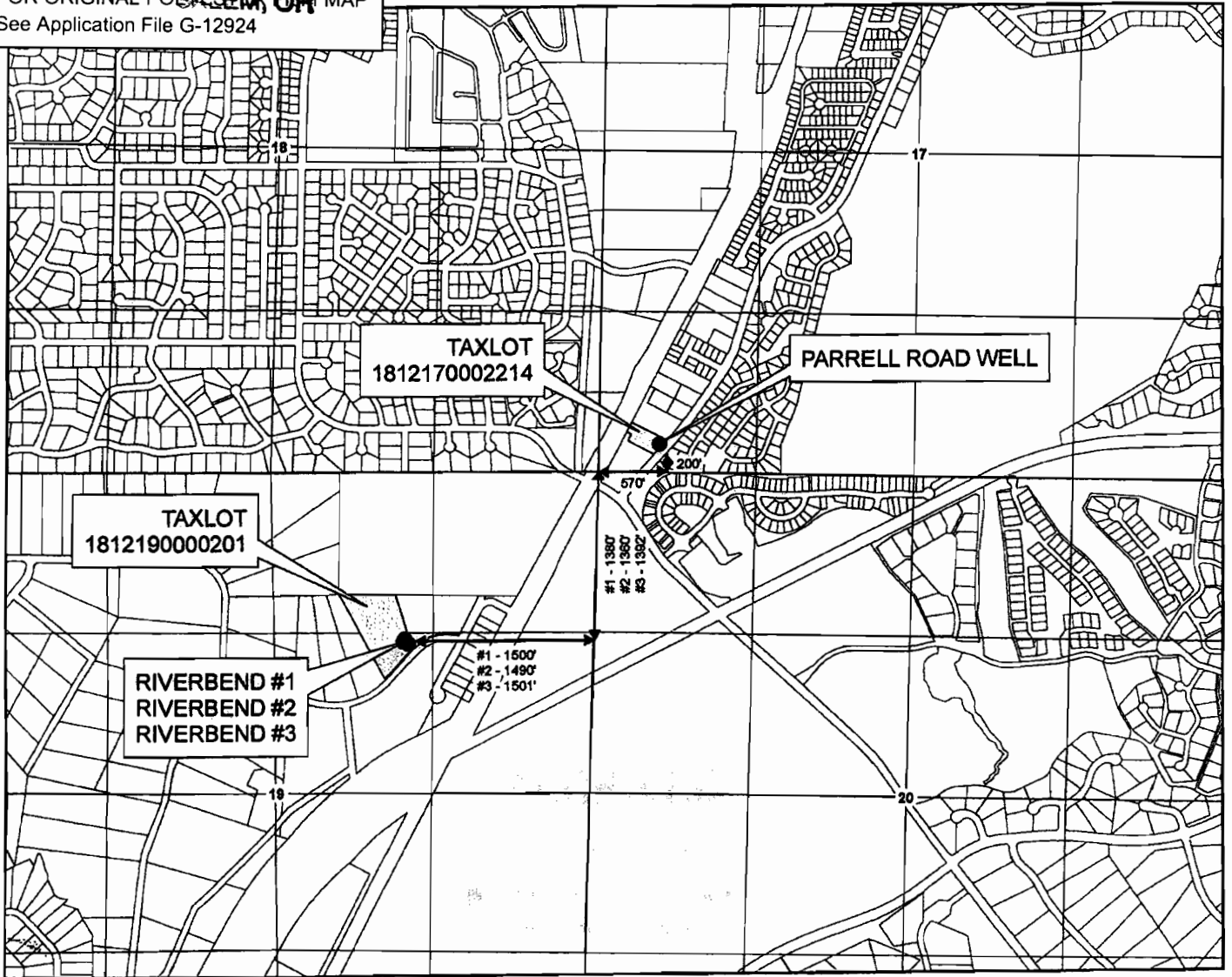
2 of 6

MAR 06 2013

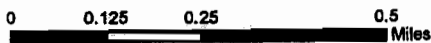
Application G-12924, Permit G-12788
Permit Amendments T-7778; T-10407
Deschutes County

FOR ORIGINAL POLYMER MAP
See Application File G-12924

T18S R12E



1 inch equals 1,320 feet



DRAWN BY: TANNER LEMMON
AVION WATER GIS DEPARTMENT
MARCH, 2008

DISCLAIMER:

This map was prepared for the purpose of identifying the location of water rights only and is not intended to provide legal dimensions or locations of property ownership lines.

Legend

- POINTS OF APPROPRIATION
- WELL SITES

WELL DESCRIPTION

PARRELL ROAD WELL -
SW 1/4, SW 1/4 of
Section 17, T 18 S, R 12 E,
WM - 200' North and 570'
East from the SW corner of
Section 17
Taxlot - 1812170002214

RIVERBEND #2 (WELL B-2) -
SW 1/4, NE 1/4 of
Section 19, T 18 S, R 12 E,
WM - 1360' South and 1490'
West from the NE corner of
Section 19
Taxlot - 1812190000201

RIVERBEND #1 (WELL 5) -
SW 1/4, NE 1/4 of
Section 19, T 18 S, R 12 E,
WM - 1380' South and 1500'
West from the NE corner of
Section 19
Taxlot - 1812190000201

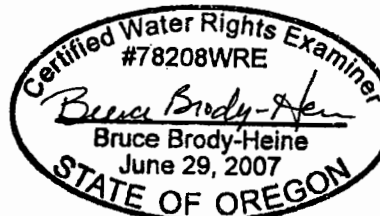
RIVERBEND #3 -
SW 1/4, NE 1/4 of
Section 19, T 18 S, R 12 E,
WM - 1392' South and 1501'
West from the NE corner of
Section 19
Taxlot - 1812190000201

NOTES:

Measuring devices:
Refer to Attachment 6

Conveyance System:
Refer to the overview map in
Attachment 1

Base Layer:
Deschutes County Taxlot Shapefile
Projected Coordinate System :
NAD 1983 StatePlane Oregon South
Geographic Coordinate System :
GCS North American 1983



EXPIRES: 12/31/09

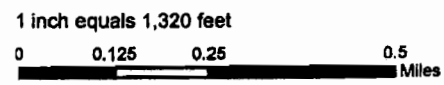
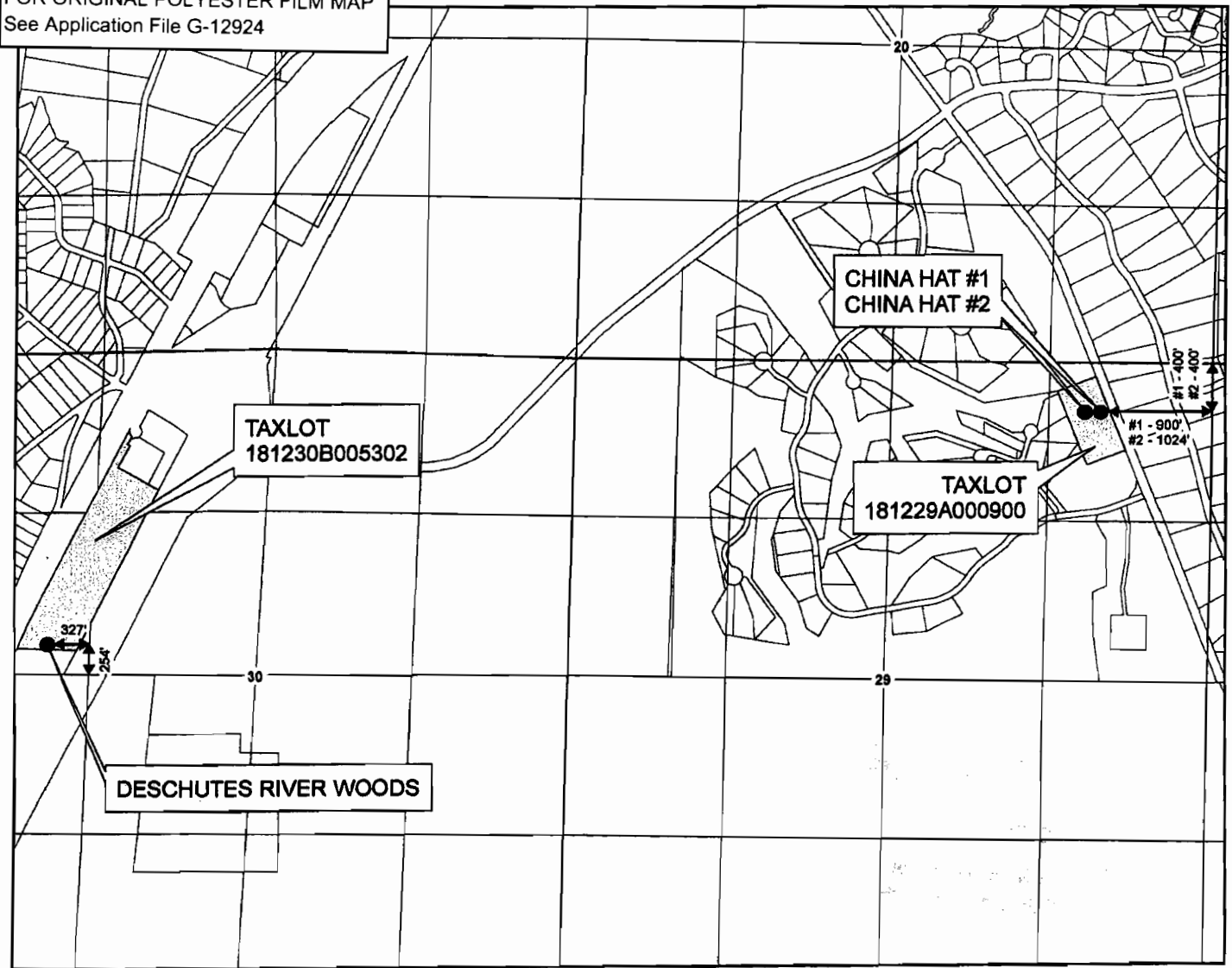


AVION WATER CO, INC.
CLAIM OF BENEFICIAL USE - WELL LOCATION MAP

Application G-12924, Permit G-12788
 Permit Amendments T-7778; T-10407
 Deschutes County

FOR ORIGINAL POLYESTER FILM MAP
 See Application File G-12924

T18S R12E



DISCLAIMER:
 This map was prepared for the purpose of identifying the location of water rights only and is not intended to provide legal dimensions or locations of property ownership lines.

Legend
 ● POINTS OF APPROPRIATION
 ■ WELL SITES

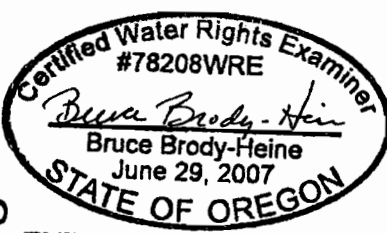
DRAWN BY: TANNER LEMMON
 AVION WATER GIS DEPARTMENT
 MARCH, 2008

WELL DESCRIPTION

DESCHUTES RIVER WOODS -
 SW 1/4, NW 1/4 of
 Section 30, T 18 S, R 12 E,
 WM - 254' North and 327'
 West from the SE corner of
 SW 1/4, NW 1/4, Section 30
 Taxlot - 181230B005302

CHINA HAT WELL #1 -
 NE 1/4, NE 1/4 of
 Section 29, T 18 S, R 12 E,
 WM - 400' South and 900'
 West from the NE corner of
 Section 29
 Taxlot - 181229A000900

CHINA HAT #2 -
 NE 1/4, NE 1/4 of
 Section 29, T 18 S, R 12 E,
 WM - 400' South and 1024'
 West from the NE corner of
 Section 29
 Taxlot - 181229A000900



RECEIVED BY OWRD

EXPIRES: 12/31/09

MAR 06 2013

SALEM, OR

NOTES:

Measuring devices:
 Refer to Attachment 6

Conveyance System:
 Refer to the overview map in
 Attachment 1

Base Layer:
 Deschutes County Taxlot Shapefile
 Projected Coordinate System :
 NAD 1983 StatePlane Oregon South
 Geographic Coordinate System :
 GCS North American 1983



AVION WATER CO, INC.

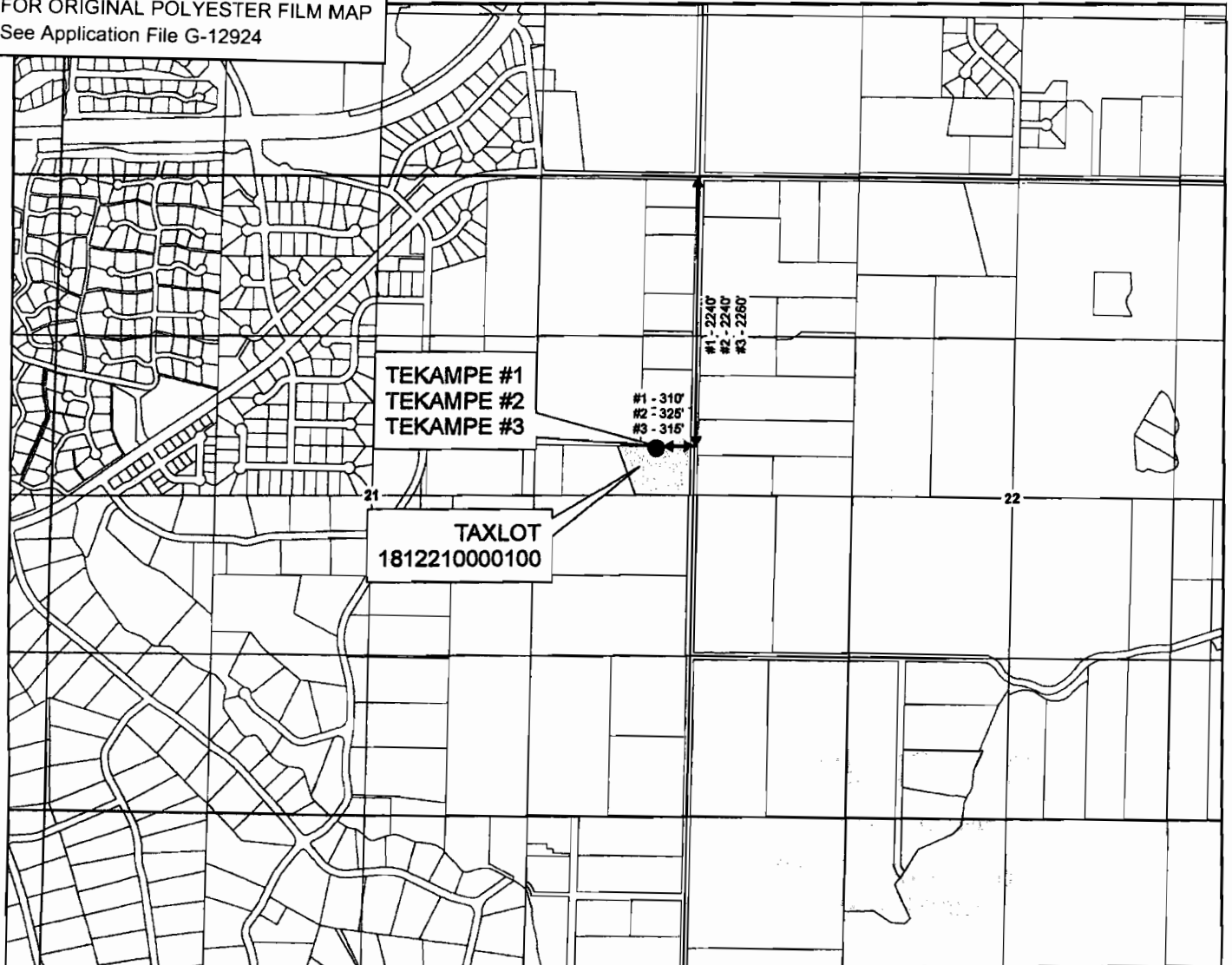
CLAIM OF BENEFICIAL USE - WELL LOCATION MAP

4 of 6

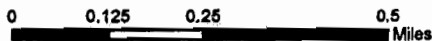
Application G-12924, Permit G-12788
Permit Amendments T-7778; T-10407
Deschutes County

T18S R12E

FOR ORIGINAL POLYESTER FILM MAP
See Application File G-12924



1 inch equals 1,320 feet



DRAWN BY: TANNER LEMMON
AVION WATER GIS DEPARTMENT
MARCH, 2008

DISCLAIMER:

This map was prepared for the purpose of identifying the location of water rights only and is not intended to provide legal dimensions or locations of property ownership lines.

Legend

- POINTS OF APPROPRIATION
- WELL SITE

WELL DESCRIPTION

TEKAMPE #1 (WELL C-1) -
SE 1/4, NE 1/4 of
Section 21, T 18 S, R 12 E,
WM - 2240' South and 310'
West from the NE corner of
Section 21
Taxlot - 1812210000100

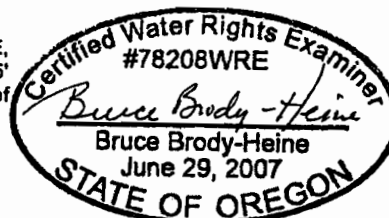
TEKAMPE #2 (WELL C-3) -
SE 1/4, NE 1/4 of
Section 21, T 18 S, R 12 E,
WM - 2240' South and 325'
West from the NE corner of
Section 21
Taxlot - 1812210000100

TEKAMPE #3 (WELL C-2) -
SE 1/4, NE 1/4 of
Section 21, T 18 S, R 12 E,
WM - 2260' South and 315'
West from the NE corner of
Section 21
Taxlot - 1812210000100

RECEIVED BY OWRD

MAR 06 2013

SALEM, OR



EXPIRES: 12/31/09

NOTES:

Measuring devices:
Refer to Attachment 6

Conveyance System:
Refer to the overview map in
Attachment 1

Base Layer:
Deschutes County Taxlot Shapefile
Projected Coordinate System :
NAD 1983 StatePlane Oregon South
Geographic Coordinate System :
GCS North American 1983



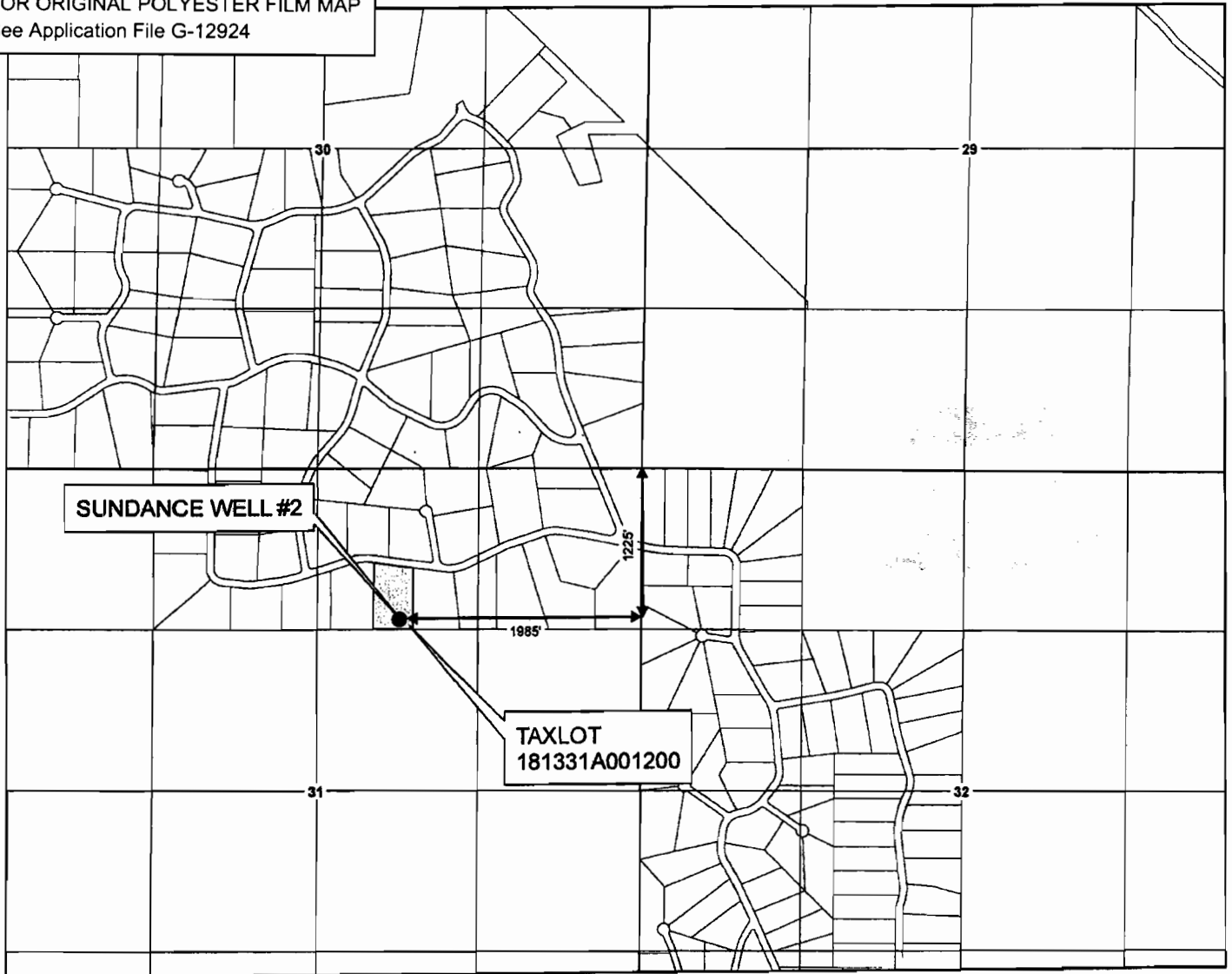
AVION WATER CO, INC.
CLAIM OF BENEFICIAL USE - WELL LOCATION MAP

5 of 6

Application G-12924, Permit G-12788
 Permit Amendments T-7778; T-10407
 Deschutes County

T18S R13E

FOR ORIGINAL POLYESTER FILM MAP
 See Application File G-12924



1 inch equals 1,320 feet



DRAWN BY: TANNER LEMMON
 AVION WATER GIS DEPARTMENT
 MARCH, 2008

DISCLAIMER:
 This map was prepared for the purpose
 of identifying the location of water rights
 only and is not intended to provide legal
 dimensions or locations of property
 ownership lines.

Legend

- POINT OF APPROPRIATION
- WELL SITE

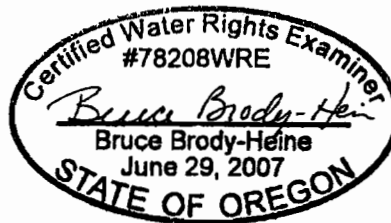
WELL DESCRIPTION

SUNDANCE WELL #2 (WELL N-2) -
 NW 1/4, NE 1/4 of
 Section 31, T 18 S, R 13 E,
 WM - 1225' South and 1985'
 West from the NE corner of
 Section 31
 Taxlot - 181331A001200

RECEIVED BY OWRD

MAR 06 2013

SALEM, OR



EXPIRES: 12/31/08

NOTES:

Measuring devices:
 Refer to Attachment 6

Conveyance System:
 Refer to the overview map in
 Attachment 1

Base Layer:
 Deschutes County Taxlot Shapefile
 Projected Coordinate System :
 NAD 1983 StatePlane Oregon South
 Geographic Coordinate System :
 GCS North American 1983



AVION WATER CO, INC.

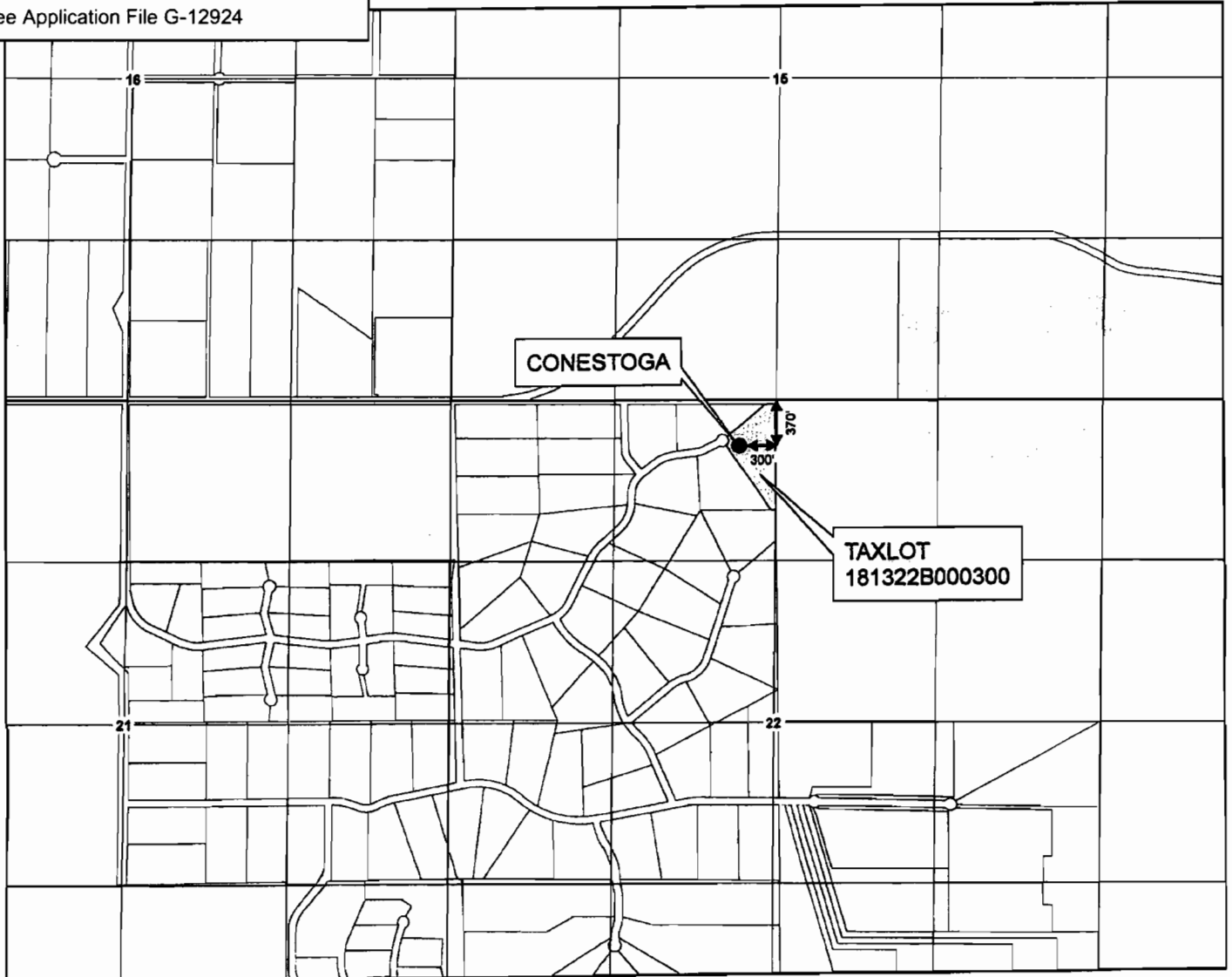
CLAIM OF BENEFICIAL USE - WELL LOCATION MAP

6 of 6

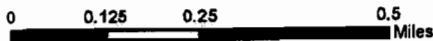
Application G-12924, Permit G-12788
Permit Amendments T-7778; T-10407
Deschutes County

FOR ORIGINAL POLYESTER FILM MAP
See Application File G-12924

T18S R13E



1 inch equals 1,320 feet



DRAWN BY: TANNER LEMMON
AVION WATER GIS DEPARTMENT
MARCH, 2008

DISCLAIMER:
This map was prepared for the purpose of identifying the location of water rights only and is not intended to provide legal dimensions or locations of property ownership lines.

Legend

- POINT OF APPROPRIATION
- WELL SITE

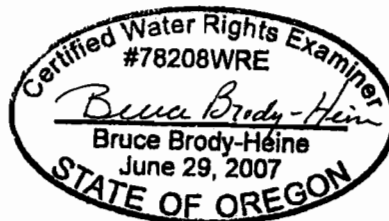
WELL DESCRIPTION

CONESTOGA (WELL R) -
NE 1/4, NW 1/4 of
Section 22, T 18 S, R 13 E,
WM - 370' South and 300'
West from the N 1/4 corner of
Section 22
Taxlot - 181322B000300

RECEIVED BY OWRD

MAR 06 2013

SALEM OR



EXPIRES: 12/31/09

NOTES:

Measuring devices:
Refer to Attachment 6

Conveyance System:
Refer to the overview map in
Attachment 1

Base Layer:
Deschutes County Taxlot Shapefile
Projected Coordinate System :
NAD 1983 StatePlane Oregon South
Geographic Coordinate System :
GCS North American 1983