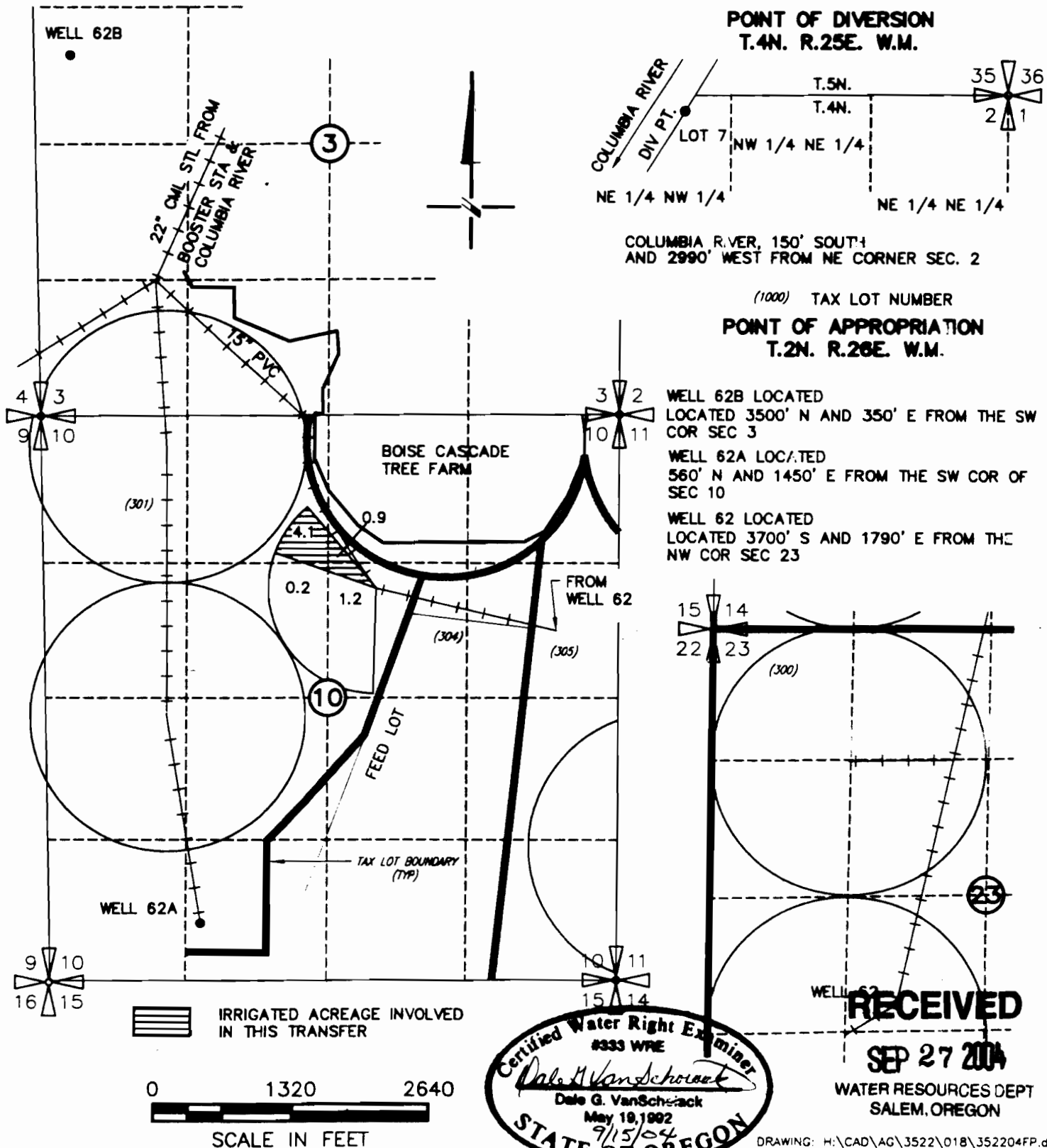


# FINAL PROOF MAP OF LARRY LINDSAY TRANSFER T-9290

T.2N. R.26E. W.M.



NOTE: THE PURPOSE OF THIS MAP IS TO IDENTIFY THE APPROXIMATE LOCATION OF THE WATER RIGHT. IT IS NOT INTENDED TO PROVIDE INFORMATION RELATIVE TO THE LOCATION OF PROPERTY OWNERSHIP BOUNDARY LINES.

DRAWING: H:\CAD\AG\3522\018\352204FP.dwg  
PRINTED BY: RogerW on 09/15/04 10:04 AM

**SCM** Consultants, Inc.  
A Tetra Tech Company