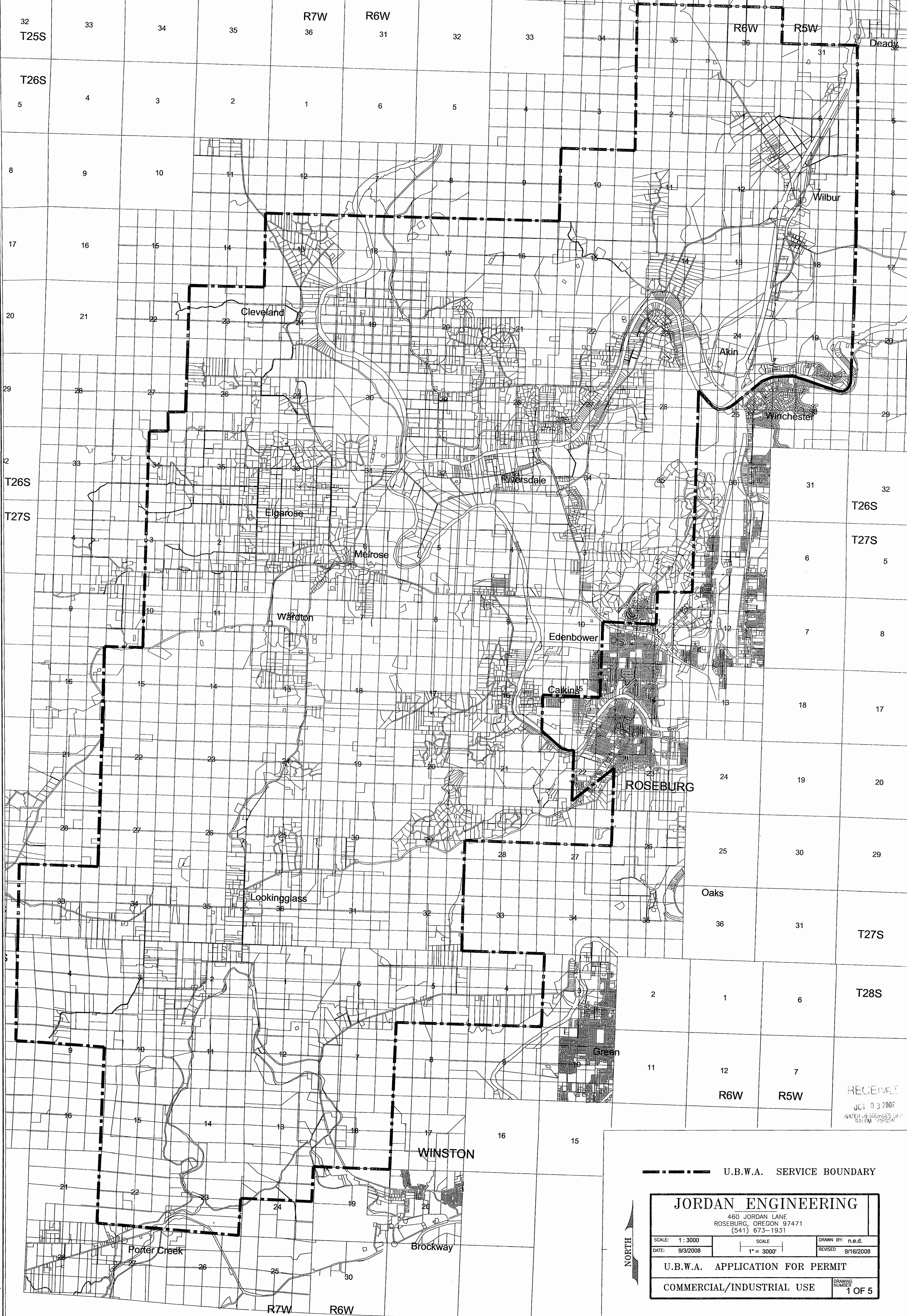


754

UMPQUA BASIN WATER ASSOCIATION

DISTRICT BOUNDARY



RECEIVED
 OCT 03 2008
 WATER RESOURCES DIV.
 SALEM, OREGON

--- U.B.W.A. SERVICE BOUNDARY

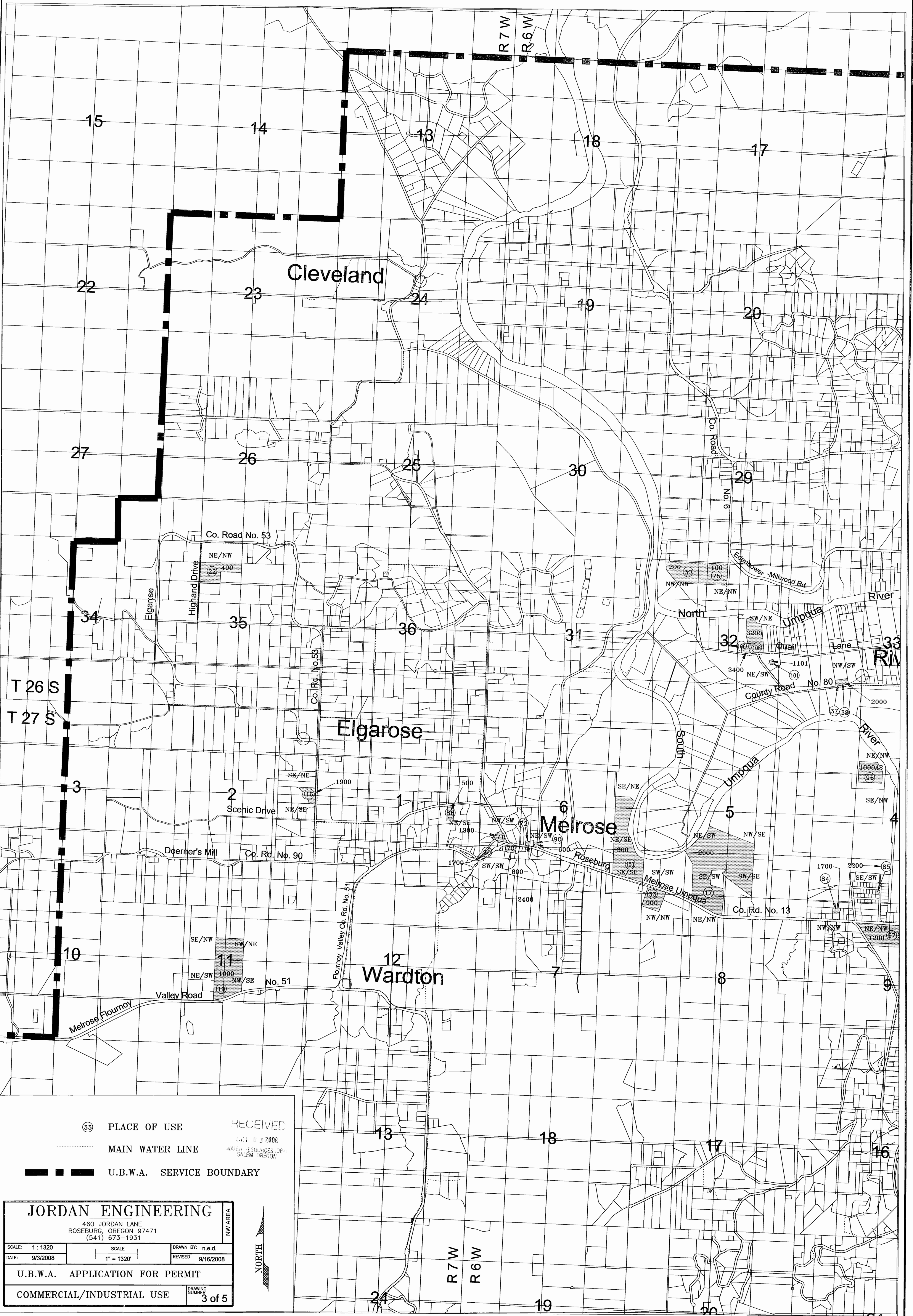


JORDAN ENGINEERING		
460 JORDAN LANE ROSEBURG, OREGON 97471 (541) 673-1931		
SCALE: 1" = 3000'	SCALE: 1" = 3000'	DRAWN BY: n.e.d.
DATE: 9/3/2008	REVISED: 9/16/2008	
U.B.W.A. APPLICATION FOR PERMIT		
COMMERCIAL/INDUSTRIAL USE		DRAWING NUMBER 1 OF 5

S 87299

258

UMPQUA BASIN WATER ASSOCIATION
T.26S & T.27S, R.6W & 7W, W.M.
DOUGLAS COUNTY OREGON



(33) PLACE OF USE
 MAIN WATER LINE
 - - - - - U.B.W.A. SERVICE BOUNDARY

RECEIVED
 OCT 03 2008
 WATER RESOURCES DIV.
 SALEM, OREGON

JORDAN ENGINEERING
 460 JORDAN LANE
 ROSEBURG, OREGON 97471
 (541) 673-1931

SCALE: 1" = 1320'	SCALE: 1" = 1320'	DRAWN BY: n.e.d.
DATE: 9/3/2008	REVISOR: 9/16/2008	

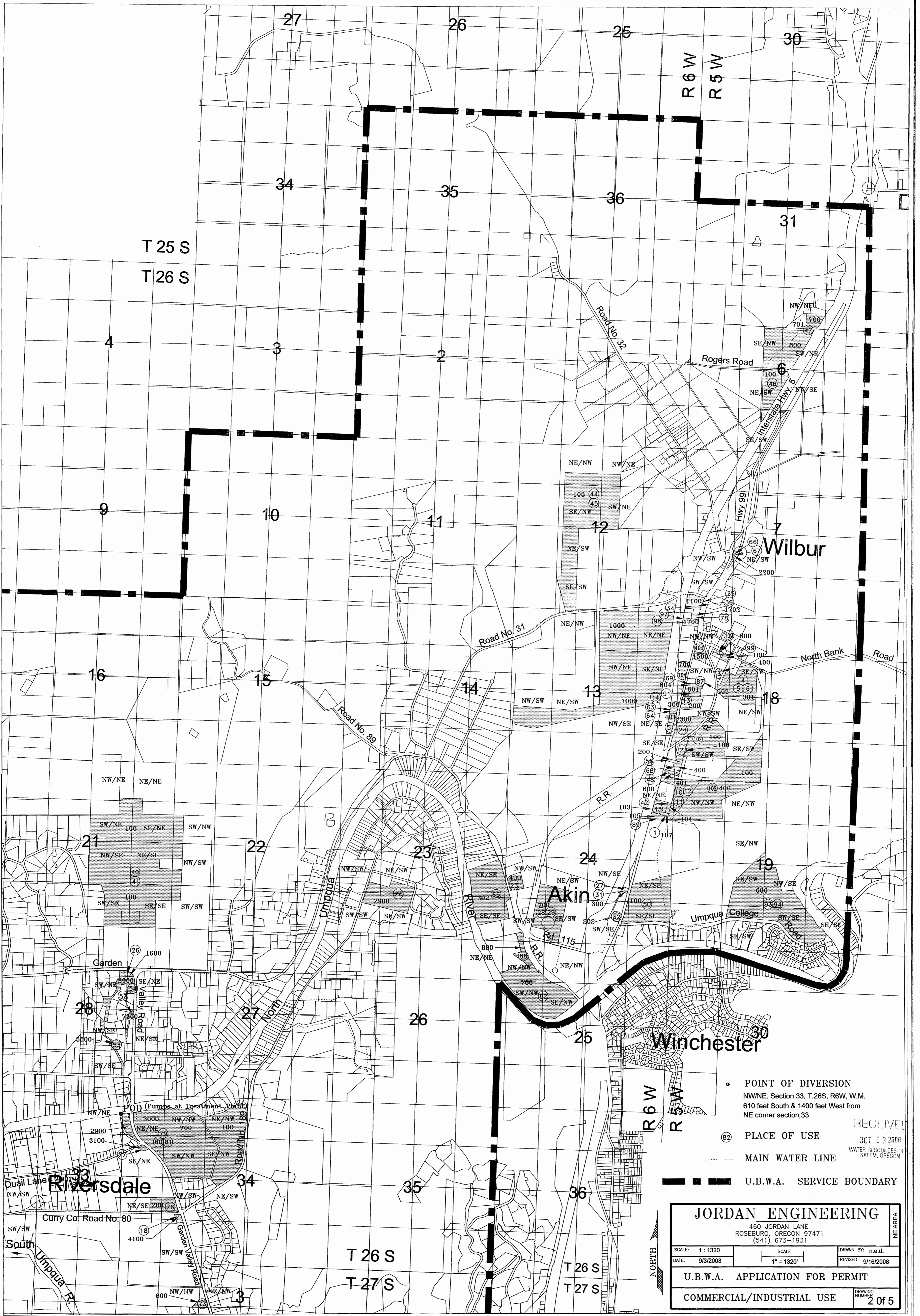
U.B.W.A. APPLICATION FOR PERMIT
 COMMERCIAL/INDUSTRIAL USE

DRAWING NUMBER: 3 of 5

S 87299

228

UMPQUA BASIN WATER ASSOCIATION
 T.25S & T.26S, R.5W & 6W, W.M.
 DOUGLAS COUNTY OREGON



S 87299

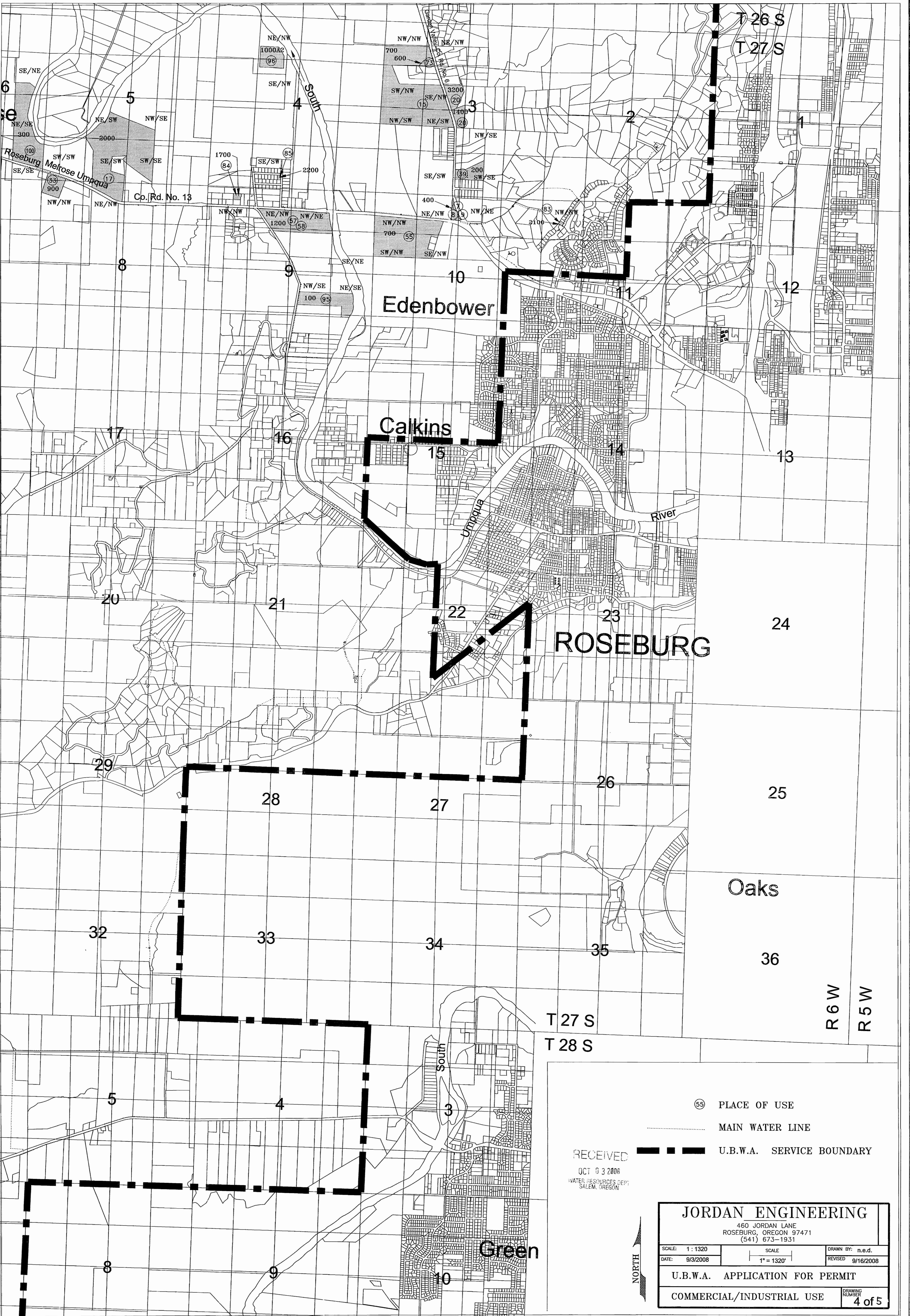
- POINT OF DIVERSION
NW/NE, Section 33, T.26S, R.6W, W.M.
610 feet South & 1400 feet West from
NE corner section 33
- ⑧2 PLACE OF USE
- MAIN WATER LINE
- U.B.W.A. SERVICE BOUNDARY

RECEIVED
 OCT 03 2008
 WATER RESOURCES DEPT
 SALEM, OREGON

JORDAN ENGINEERING		
460 JORDAN LANE ROSEBURG, OREGON 97471 (541) 673-1931		
SCALE: 1" = 1320'	DATE: 9/3/2008	DRAWN BY: n.e.d. REVISOR: 9/16/2008
U.B.W.A. APPLICATION FOR PERMIT		DRAWING NUMBER 2 of 5
COMMERCIAL/INDUSTRIAL USE		

236

UMPQUA BASIN WATER ASSOCIATION
T.27S & T.28S, R.5W & 6W, W.M.
DOUGLAS COUNTY OREGON



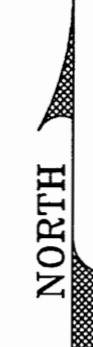
S 87299

RECEIVED
OCT 9 3 2008
WATER RESOURCES DEPT.
SALEM, OREGON

- Ⓢ PLACE OF USE
- MAIN WATER LINE
- — — — — U.B.W.A. SERVICE BOUNDARY

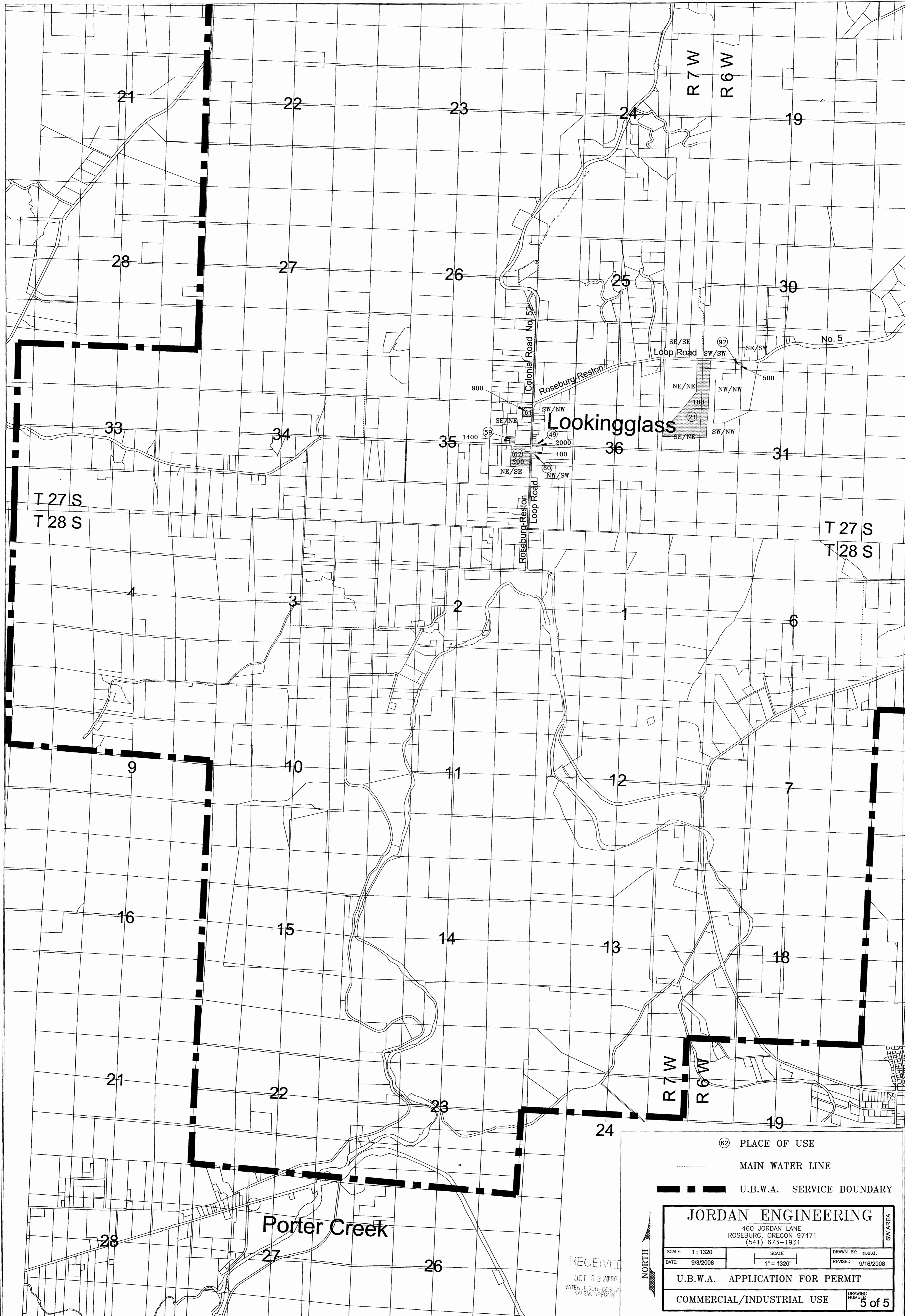
JORDAN ENGINEERING
460 JORDAN LANE
ROSEBURG, OREGON 97471
(541) 673-1931

SCALE: 1:1320	SCALE: 1"=1320'	DRAWN BY: n.e.d.
DATE: 9/3/2008		REVISED 9/16/2008
U.B.W.A. APPLICATION FOR PERMIT		
COMMERCIAL/INDUSTRIAL USE		DRAWING NUMBER 4 of 5



238

UMPQUA BASIN WATER ASSOCIATION
T.26S & T.27S, R.6W & 7W, W.M.
DOUGLAS COUNTY OREGON



⑥2 PLACE OF USE
 MAIN WATER LINE
 - - - - - U.B.W.A. SERVICE BOUNDARY

JORDAN ENGINEERING
 460 JORDAN LANE
 ROSEBURG, OREGON 97471
 (541) 673-1931

SCALE: 1:1320	SCALE: 1" = 1320'	DRAWN BY: n.e.d.
DATE: 9/3/2008		REVISED: 9/16/2008

U.B.W.A. APPLICATION FOR PERMIT
 COMMERCIAL/INDUSTRIAL USE

5 of 5

S 8729

RECEIVED
OCT 03 2008
WATER RESOURCES DIVISION
SAS/EM, DRPG/CM