

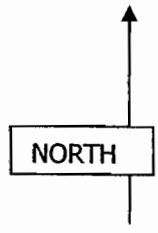
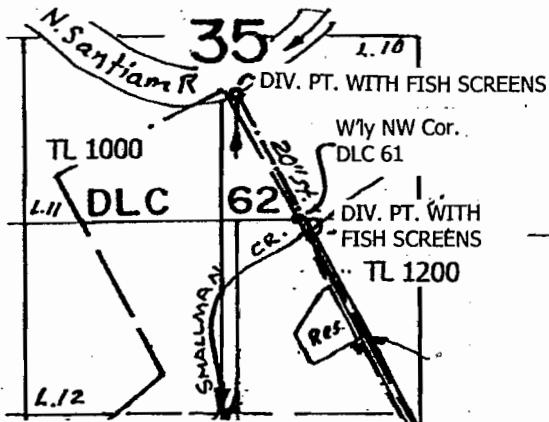
FINAL PROOF SURVEY MAP
 MT. JEFFERSON FARMS, INC.
 T-9487
 T 9 & 10 S R 2 W, W.M.

RECEIVED

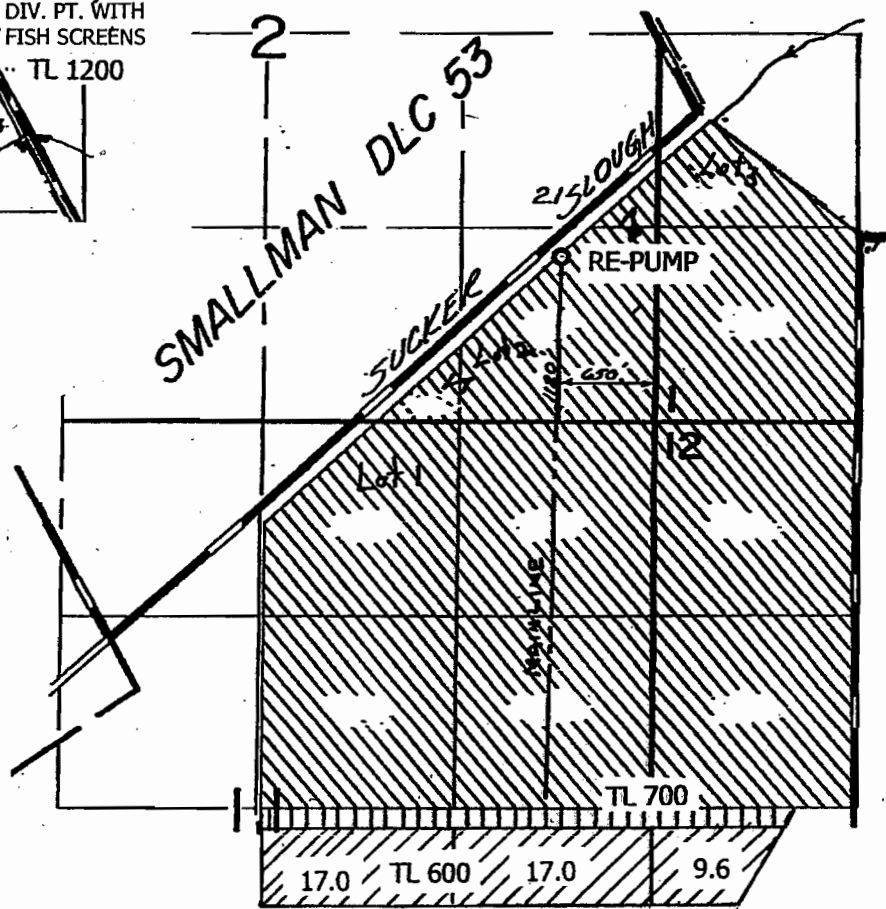
MAY 15 2006

WATER RESOURCES DEPT
 SALEM, OREGON

T 9 S R 2 W, W.M.



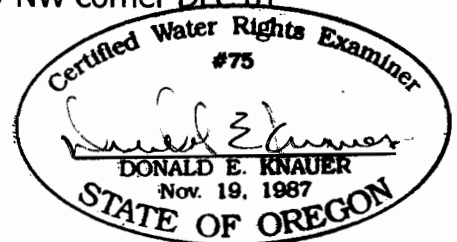
T 10 S R 2 W, W.M.



N.F. SANTIAM RVR. DIV. PT.: 850' N & 400' W from the W'y NW corner DLC 61
 SMALLMAN CREEK DIV. PT.: 90' S & 100' E from the W'y NW corner DLC 61

Scale 4" = 1 mile

This map is not intended to provide legal dimensions or locations of property ownership lines.



RENEWAL DATE: 6-30-07