

**FINAL PROOF SURVEY
AND
CLAIM OF BENEFICIAL USE
CHANGE IN POINT OF APPROPRIATION**

LOCATED WITHIN
SW 1/4, NE 1/4, AND SE 1/4, NE 1/4 S29, T.5N., R.29E., W.M
UMATILLA COUNTY, OREGON

APPLICANTS: JIMMY A. AND PAULINE E. BIER

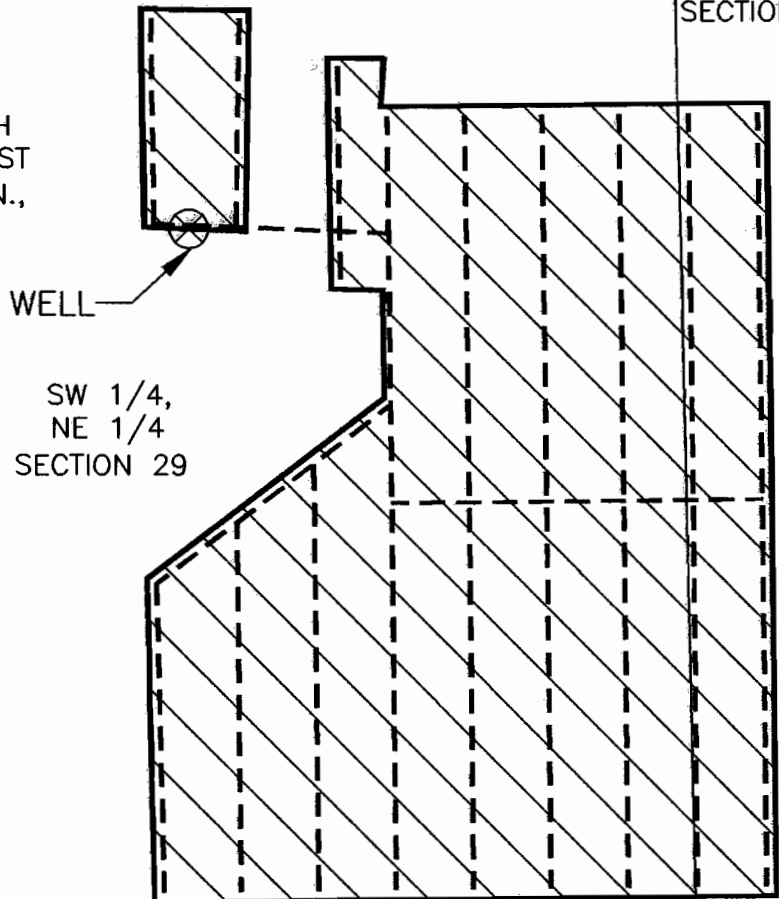
TRANSFER 8332

SPECIAL ORDER VOLUME 54, PAGE 77

NE 1/16
S29

SE 1/4,
NE 1/4
SECTION 29

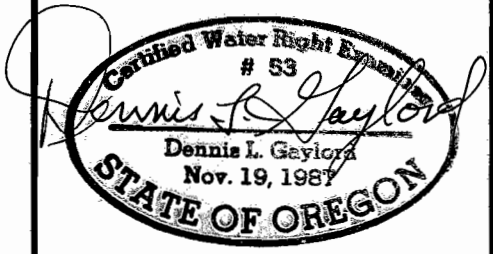
CORNER TIE:
WELL IS LOCATED 635 FEET NORTH
AND 1,605 FEET WEST OF THE EAST
1/4 CORNER OF SECTION 29, T.5N.,
R.29E.



WELL

SW 1/4,
NE 1/4
SECTION 29

THIS MAP IS PREPARED
FOR THE EXPRESS
PURPOSE TO SHOW WATER
APPROPRIATION AND USE.
IT IS NOT INTENDED TO
SHOW OR LOCATE
PROPERTY OWNERSHIP
LINES.



RENEWS 6/30/2001

DENNIS L. GAYLORD,
CWRE
71614 S.W. LAKE DRIVE
PENDLETON, OR 97801
(541)-276-6260 ©
JUNE, 2000

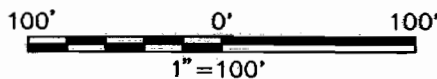
Drawn by: Mill Creek Drafting

LEGEND

- BURIED PVC DISTRIBUTION LINE
-  AREA BENEFICALLY IRRIGATED:

SW 1/4, NE 1/4 = 2.24 ACRES
SE 1/4, NE 1/4 = 0.46 ACRES

TOTAL = 2.70 ACRES



C 1/4
S29

1/4
S29 | S28
C-E 1/16
S29

