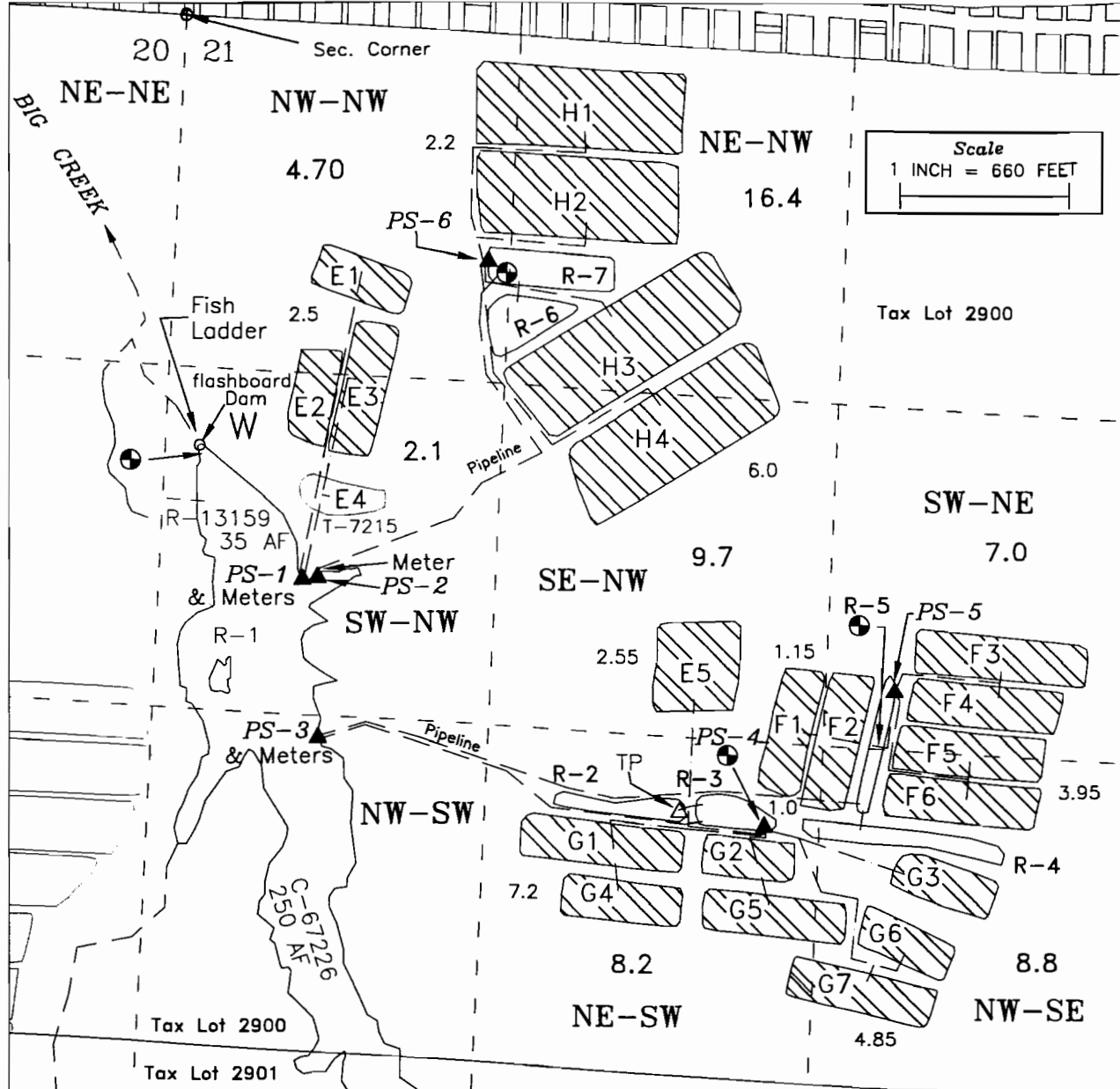


TOWNSHIP 31 SOUTH, RANGE 15 WEST, W.M. CURRY COUNTY OREGON

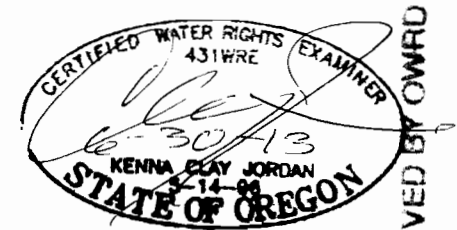
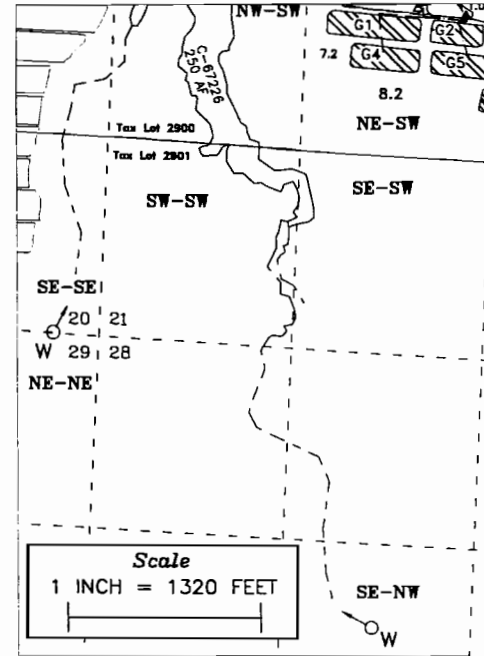
CLAIM OF BENEFICIAL USE

APPLICATION R-74441 PERMIT R-12960
 APPLICATION R-74440 PERMIT R-13159
 APPLICATION S-74439 PERMIT S-53713

IN THE NAME OF SEA WIND FARMS, INC.



Upstream Weir Location



RECEIVED BY OWRD

FEB 13 2013

POINTS OF DIVERSION

POD/SOURCE	FEET SOUTH	FEET EAST	1/4 1/4
DAM, R-1, BIG CR.	1670	140	SW-NW
PS-1, BIG CR, R-1	2170	565	SW-NW
PS-2, BIG CR, R-1	2160	620	SW-NW
PS-3, BIG CR, R-1	2775	660	NW-SW
PS-4, R-2 & 3	3010	2410	NE-SW
PS-5, R-4 & 5	2450	2895	SW-NE
PS-6, R-6 & 7	890	1230	NW-NW

RESERVOIRS - 89 AF

Reservoir	Volume
R-1	35.0 AF
R-2	5.0 AF
R-3	7.5 AF
R-4	9.3 AF
R-5	5.0 AF
R-6	12.2 AF
R-7	15.0 AF

All from the NW Corner of Section 21 and within Section 21, Township 31 South, Range 15 West, W.M. (Measurements are perpendicular to and along Section Lines)

- W - Weir with staff gage
- ▲ - POD (PS - Pump Station)
- ⊙ - Staff Gage
- △ TP - Transfer Pump
- G-1 - Bog Number
- R-1 - Reservoir Number

CRANBERRY OPERATIONS - 56.9 ACRES

Base map - Curry County GIS with 2005 FSA aerial photo overlay & 8/2/2012 Google aerial for assumed best fit

Mapped from field inspection September 25, 2012

This map is not intended to provide legal dimensions or locations of property ownership lines

JORDAN ENGINEERING
 460 JORDAN LANE
 ROSEBURG, OR 97471
 (541) 673-1931

Drawn 10/29/2012 n.e.d.
 Revised 12/6/2012 n.e.d.

754