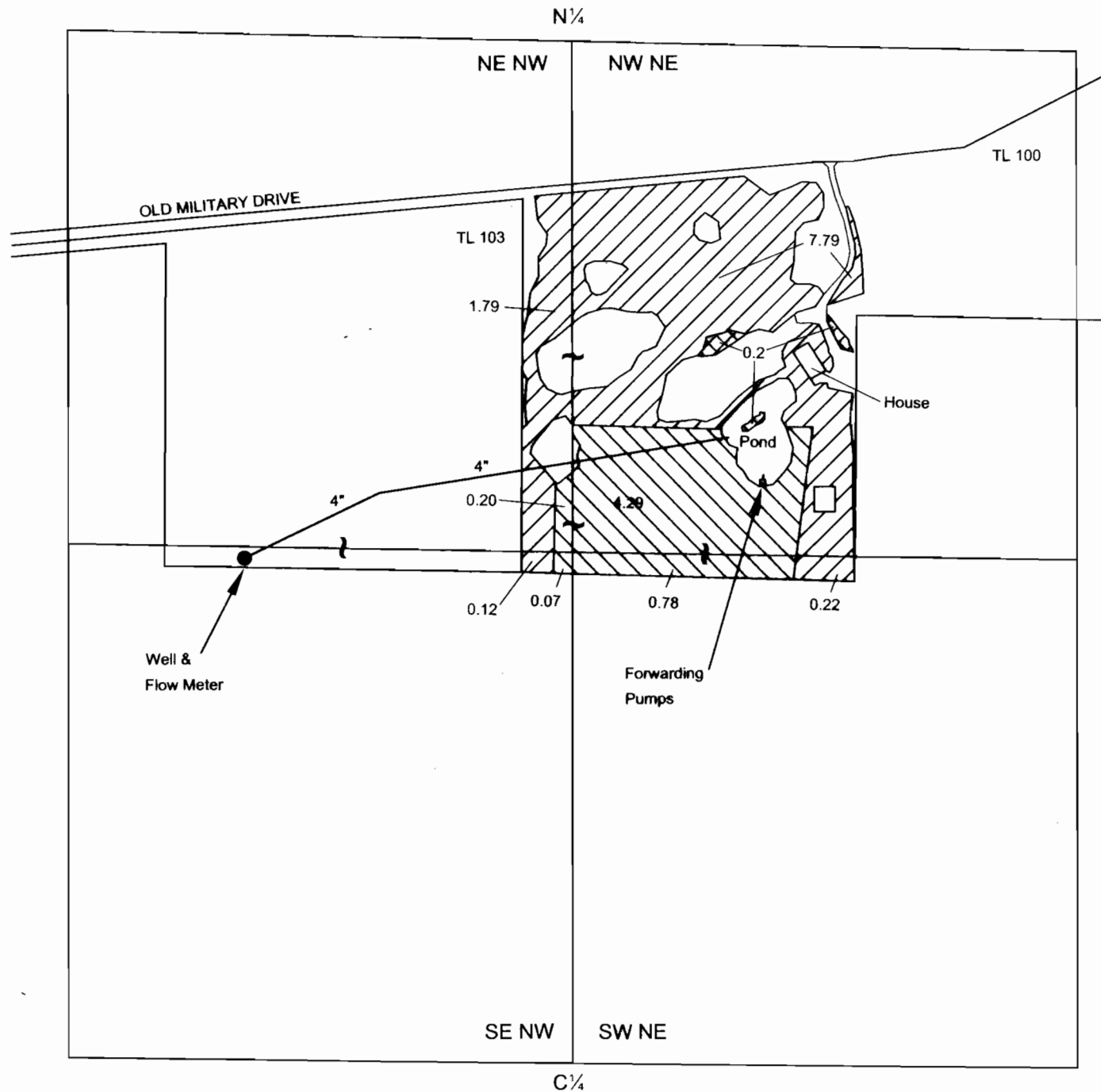

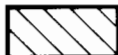




COB MAP # 0631

T14S, R10E, W.M.
 Section 35
 Deschutes County
 Transfer T-104489
 Claim of Beneficial Use Map
 Dr. Craig Stephenson Property



EXPLANATION:

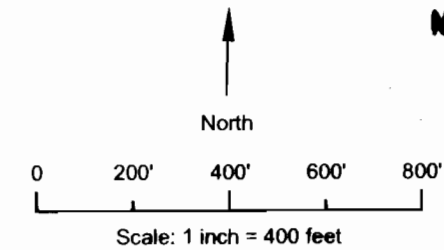
-  - 9.92 Acres
Priority Date: January 16, 1985
-  - 5.34 Acres
Priority Date: January 16, 1985
-  - 0.2 Acres
Excess Irrigation
-  - Point of Appropriation (Well)

Well located 1380 ft S and 860 ft W from N¼ corner of Section 35

Site inspection conducted September 7 and 8, 2011

WRD mapping waiver obtained for not showing irrigation mainlines

RECEIVED
 NOV 08 2011



October 18, 2011

THIS MAP IS NOT INTENDED TO
 PROVIDE LEGAL DIMENSIONS OR
 LOCATIONS OF PROPERTY
 OWNERSHIP LINES.

Figure 1

SKOOKUM
 WATER ASSOCIATES, INC
 P.O. Box 80174
 Portland, OR 97280
 (503) 319-8926

0631