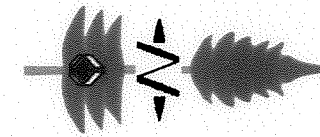
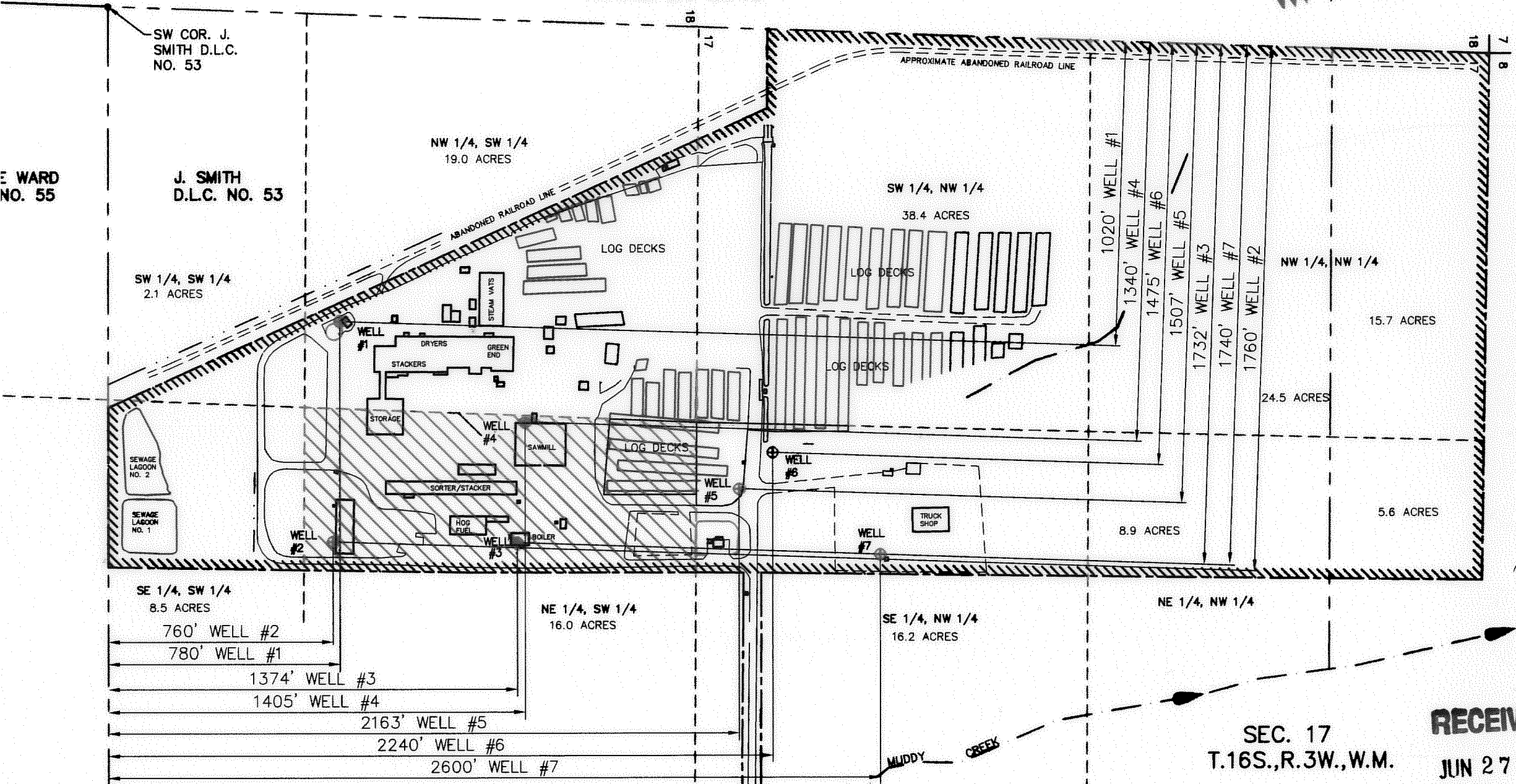


**FINAL PROOF SURVEY
FOR
WEYERHAEUSER COMPANY
TRANSFER 8043**



COBU MAP # 0359



SW COR. J. SMITH D.L.C. NO. 53

E WARD NO. 55

J. SMITH D.L.C. NO. 53

NW 1/4, SW 1/4
19.0 ACRES

SW 1/4, NW 1/4
38.4 ACRES

NW 1/4, NW 1/4

15.7 ACRES

24.5 ACRES

5.6 ACRES

SW 1/4, SW 1/4
2.1 ACRES

SE 1/4, SW 1/4
8.5 ACRES

NE 1/4, SW 1/4
16.0 ACRES

SE 1/4, NW 1/4
16.2 ACRES

NE 1/4, NW 1/4

SEC. 17
T.16S., R.3W., W.M.

RECEIVED

JUN 27 2008

WATER RESOURCES DEPT
SALEM OREGON STAMPED
WITH RED INK ARE ORIGINALS

LEGEND

- APPROXIMATE PROPERTY LINE
- - - FENCE LINE
- ==== GRAVEL DRIVEWAY
- - - FORTY LINE
- SECTION LINE
- - - DONATION LAND CLAIM LINE
- ⊕ WELL LOCATION (DIVERSION POINT)
- PERIMETER OF PLACE OF USE FOR TRANSFER 8043. CONCLUSION OF LAW ITEM NO. 6 ON TRANSFER FINAL ORDER
- ▨ PLACE OF USE UNDER CERTIFICATE NO. 50294 PMT. G-6645

NOTE:

WELL #3 GOES WITH T-8043 (CERTIFICATE 50294 PERMIT G-6645)
WELLS #1,2,4,5,6,&7 ARE ADDITIONAL POINTS OF DIVERSION



DULY SWORN AS A WATER RIGHT EXAMINER
RED THIS MAP FOR WEYERHAEUSER COMPANY
JUNE 2008.

FOR THE PURPOSE OF IDENTIFYING THE
PROPERTY ONLY AND HAS NO INTENT TO PROVIDE

FINAL PROOF SURVEY MAP IN SEC. 17, T16S., R.3W., W.M. AT COBURG FACILITY		
PLANT or MILL COBURG	AREA in PLANT PLOT PLAN	ACAD FILE 4776P01
WEYERHAEUSER COMPANY ENGINEERING DEPT. ALBANY, OR		
SCALE: 1"=400'-0"	DATE: JUNE 25, 2008	
DRAWN BY: JEH	PLT © 1 = 4800	TIME: 09:27