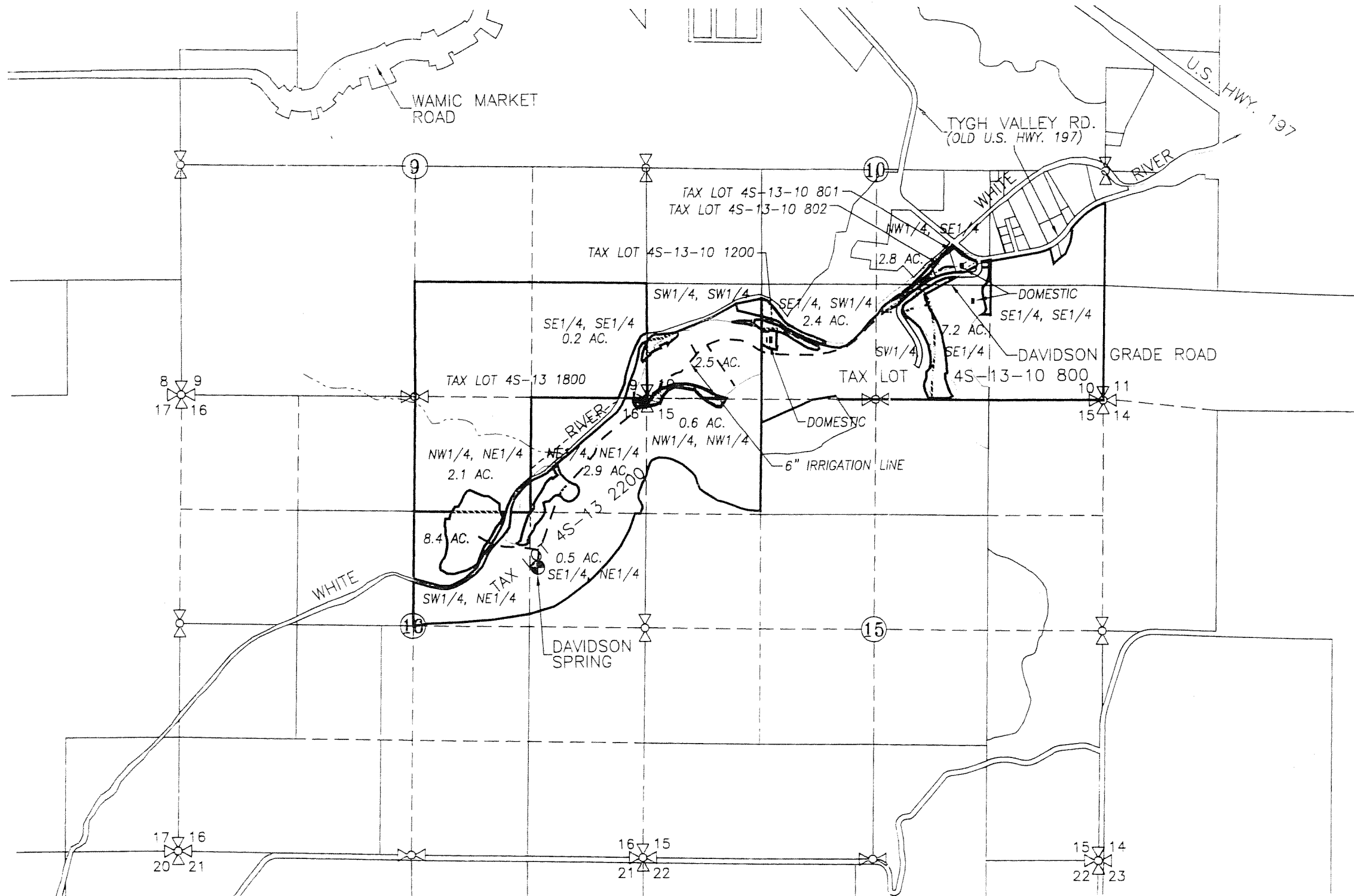
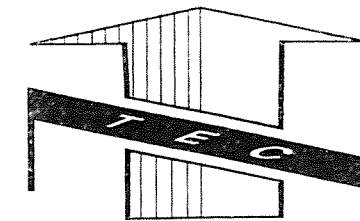


SECTIONS 9, 10, 15, AND 16, TOWNSHIP 4 S. RANGE 13 E. W.M.
 WASCO COUNTY, OREGON



REFERENCE:

- 1) PARTITION PLAT 2008-0017 FOR JON AND FRED JUSTESEN BY TENNESON ENGINEERING CORP. W.O. #12611, JUNE 2008

TRANSFER No. 6791

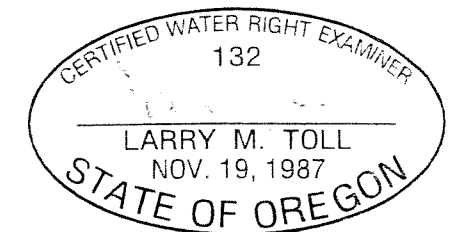
IN THE NAME OF:

JONNIE AND FRED JUSTESEN

DATE: NOVEMBER 21, 2011

BY: **TENNESON ENGINEERING CORP.**

3313 W. 2ND. STREET, SUITE 100
 THE DALLES, OREGON. 97058
 PH. 541-296-9177
 FAX 541-296-6657



EXPIRES: 06/30/2012

NOTE:

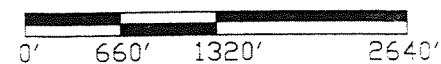
"THIS MAP IS NOT INTENDED TO PROVIDE DIMENSIONS OR LOCATIONS OF PROPERTY OWNERSHIP LINES."

LEGEND:

- DAVIDSON SPRING: 1950' S. & 1250' W. OF NE COR. SEC. 16
- ▭ APPLICATION AREA = 29.6 ACRES
- EXISTING IRRIGATION MAIN

CLAIM OF BENEFICIAL USE MAP

SCALE: 1" = 1320'



1/18/38
folder U