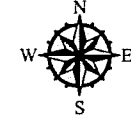


0205

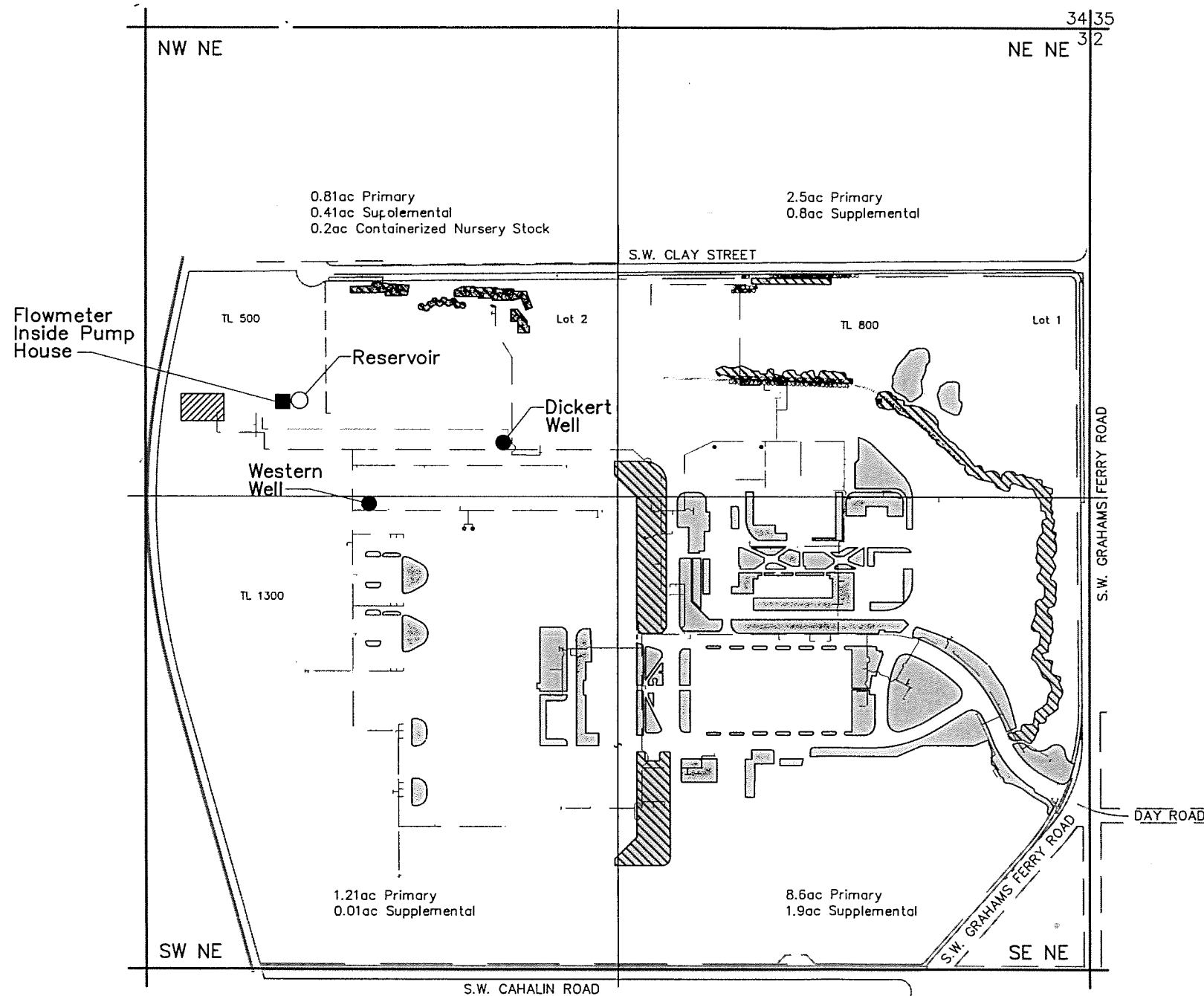
TOWNSHIP 3 SOUTH, RANGE 1 WEST W.M. SECTION 3
WASHINGTON COUNTY, OREGON

1 INCH = 400 FEET



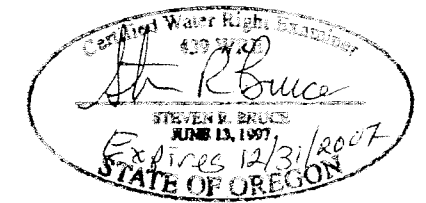
RECEIVED
JUN 19 2006
WATER RESOURCES DEPT
SALEM, OREGON

APPLICATION T-8457
SPECIAL ORDER VOLUME 54,
PAGES 534 TO 538



Legend

- Primary Irrigation 13.12 Acres
- Supplemental Irrigation 3.12 Acres
- Containerized Nursery Stock 0.2 Acres
- Irrigation Mainline



NOTES:

1. Western Well located 1,330 feet south and 2,015 feet west from NE 1/4 section 3.
2. Dickert Well located 1,160 feet south and 1,635 feet west from NE 1/4 section 3.
3. Site inspection survey completed March 9, 2006.

Claim of Beneficial Use Map
Coffee Creek Correctional Facility

Department of Corrections
Wilsonville, Oregon

GEOENGINEERS

Figure 1

0205

06-19-06 11:53

THIS MAP IS NOT INTENDED TO PROVIDE LEGAL DIMENSIONS OR LOCATIONS OF PROPERTY OWNERSHIP LINES.

Reference: Base drawing dated August 8, 2000, provided by Oregon Department of Corrections.

P:\244006\001\CAD\COBU.dwg SRB:MMWJ 06/02/06