

SECTION 34 T.28S. R.7W. W.M.
DOUGLAS COUNTY

1"=400'

SEE MAP 28 7 27

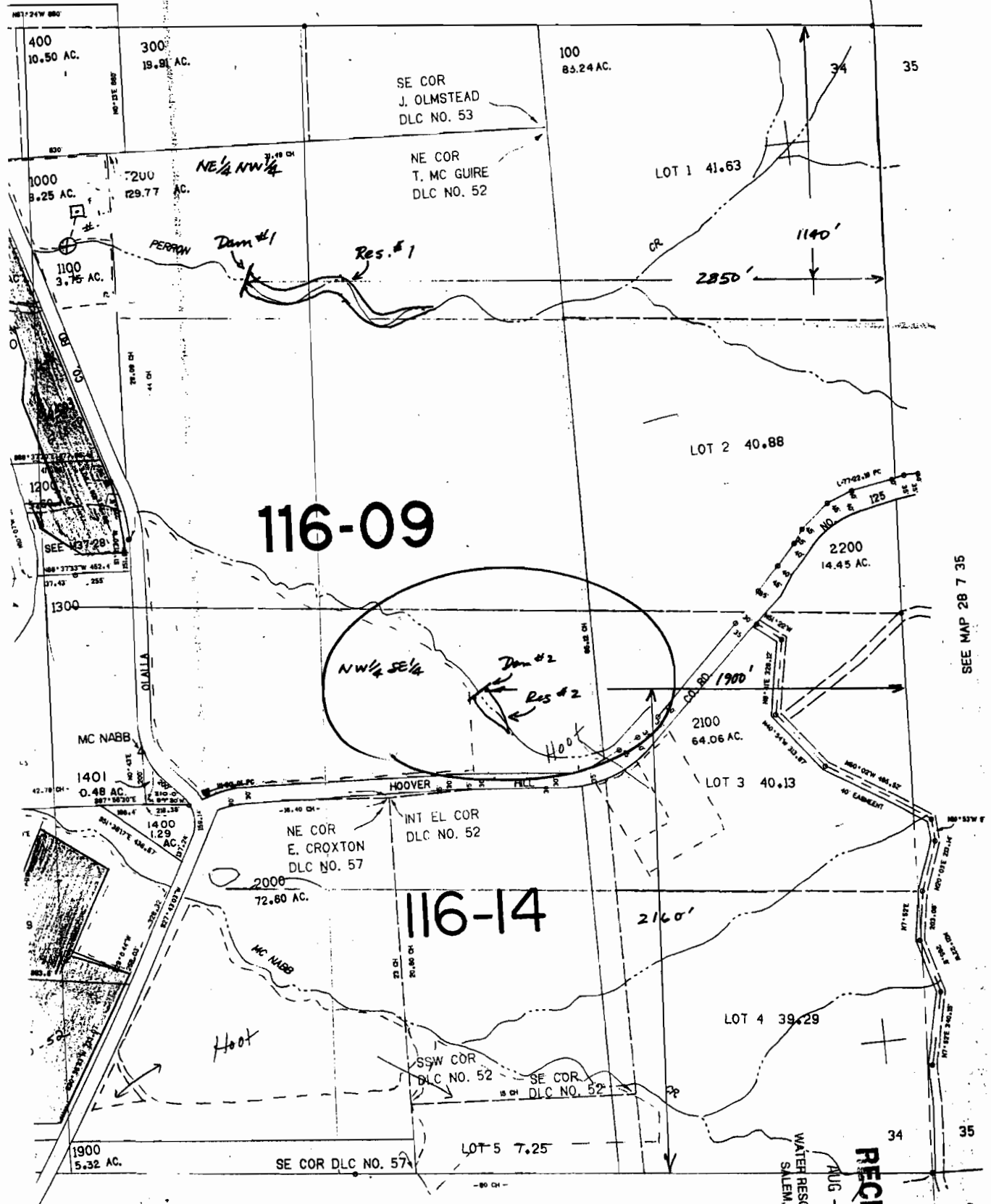
183567

RECEIVED

DEC 16 2011

Application No. ~~R-81312~~
Permit No.

WATER RESOURCES DEPT
SALEM, OREGON



116-09

116-14

SEE MAP 28 7 35

Application No. 183567
Permit No. 83567
SEE MAP 29 7 3

RECEIVED
AUG - 2 1996
WATER RESOURCES DEPT
SALEM, OREGON