

36's-6w-32



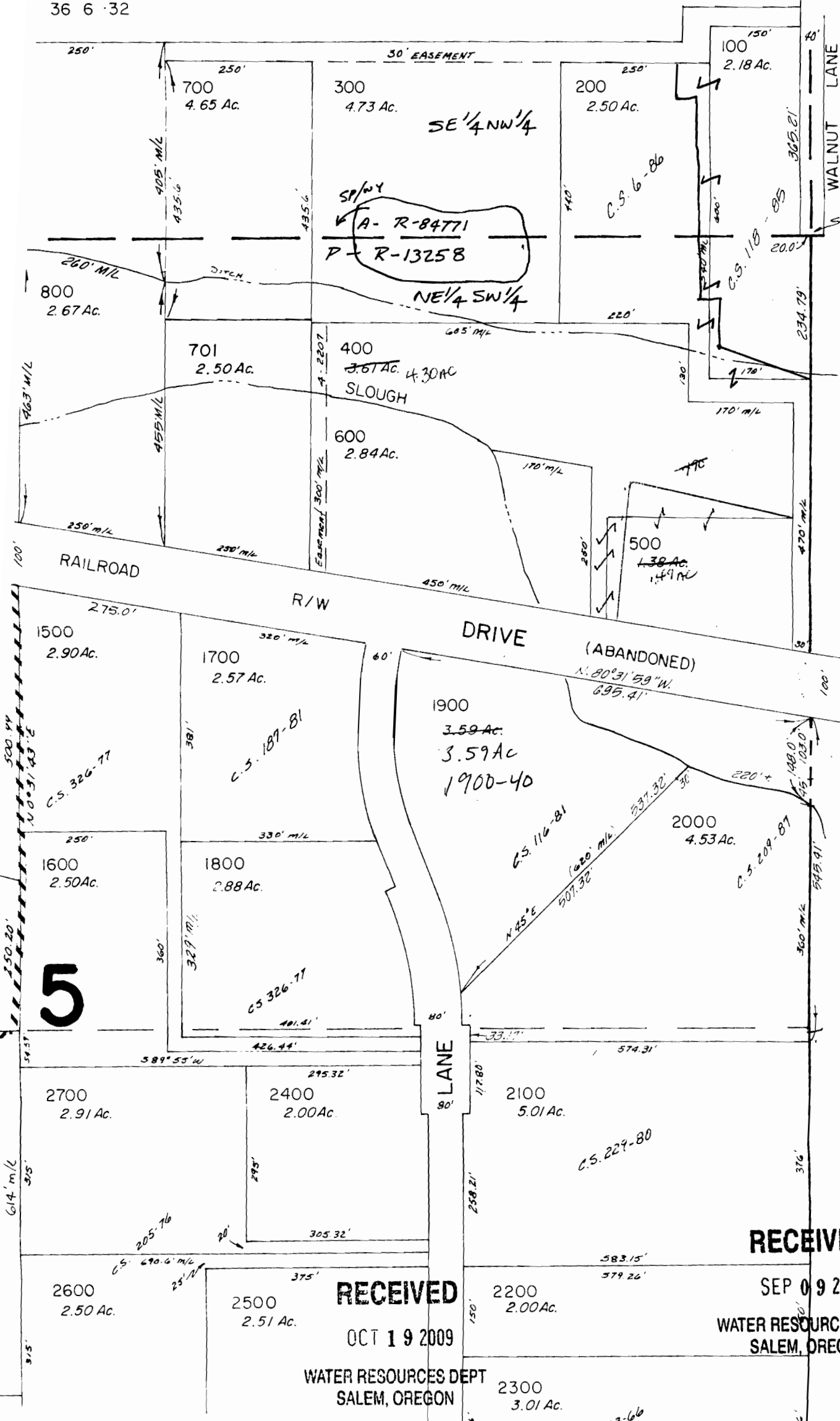
T. 36S. R. 6W. W.M.  
COUNTY

36 6 32-3

200'

Scale 1" = 200'

36 6 32



CANCELLED T.L.

- 890
- 1090
- 1190
- 1400
- 1403
- 3300
- 1990

5

SEE MAP 36 6 32

RECEIVED

OCT 19 2009

WATER RESOURCES DEPT  
SALEM, OREGON

RECEIVED

SEP 09 2009

WATER RESOURCES DEPT  
SALEM, OREGON

23-66