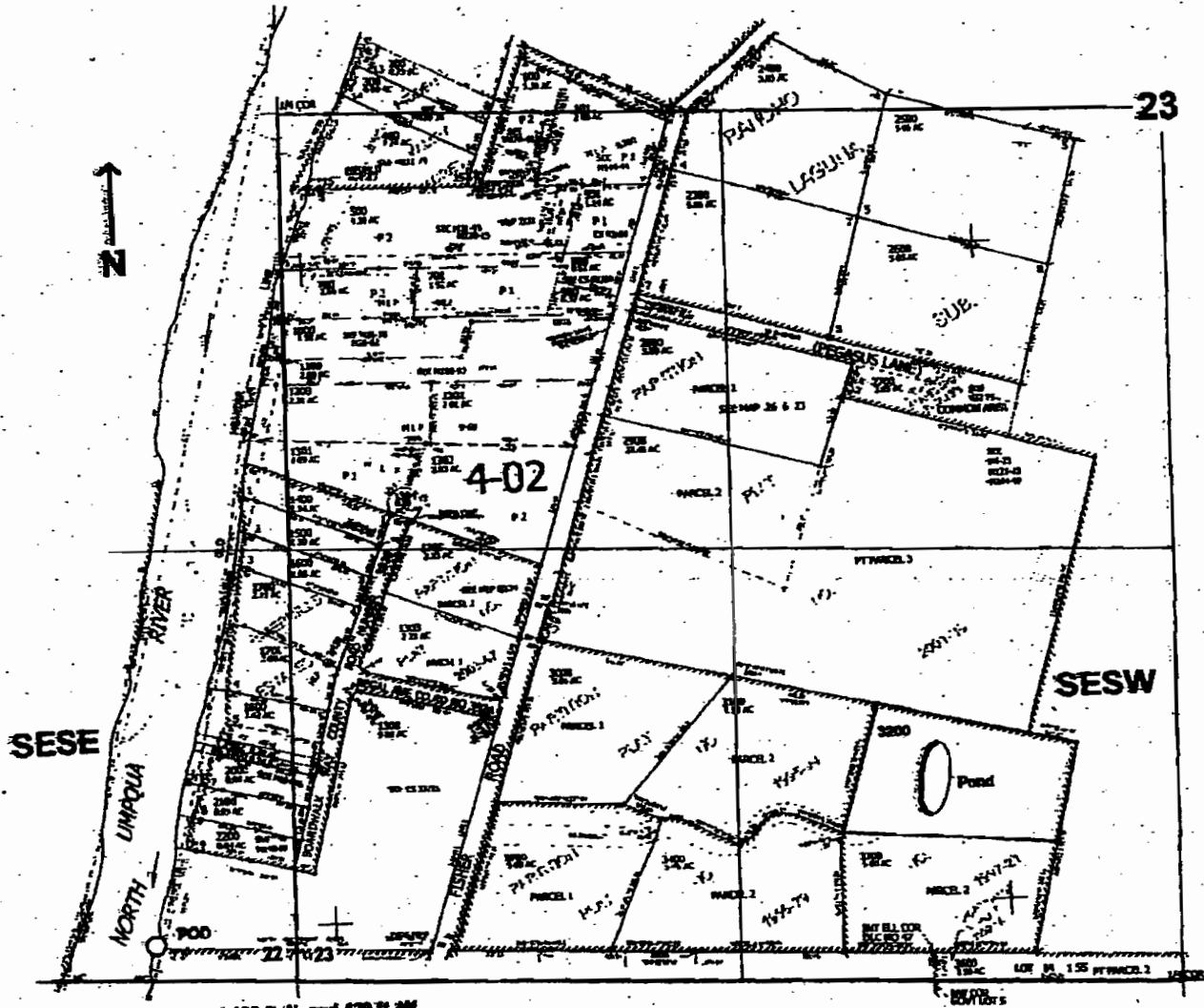


T.26S. R.6W. W.M.
DOUGLAS COUNTY
Scale: 1" = 500'



POD is located 100 ft. N. and 420 ft. W. from the SW corner of Sec. 23
DAM is located 620 ft. N. and 1870 ft. E.

RECEIVED

WATER RESOURCES DEPT.
SALEM, OREGON

RECEIVED

MAY 01 2006

WATER RESOURCES DEPT.
SALEM, OREGON

app no. R 86534