

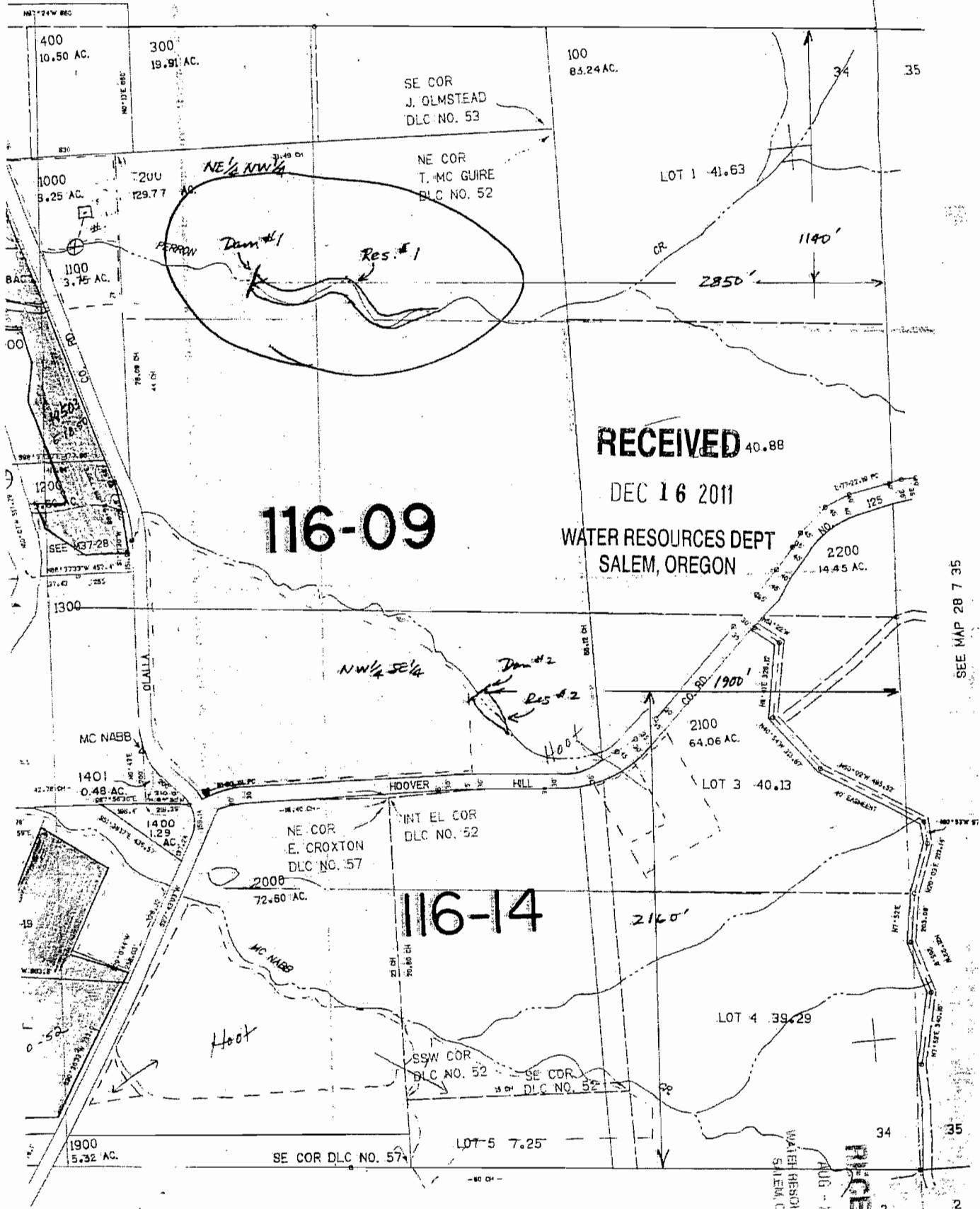
SECTION 34 T.28S. R.7W. W.M.  
DOUGLAS COUNTY

1"=400'

SEE MAP 28 7 27

Application No. R-81372  
Permit No. 112312

27 26



RECEIVED 40.88

DEC 16 2011

WATER RESOURCES DEPT  
SALEM, OREGON

116-09

116-14

SEE MAP 28 7 35

RECEIVED  
AUG 2 1996  
WATER RESOURCES DEPT  
SALEM, OREGON

SEE MAP 29 7 3