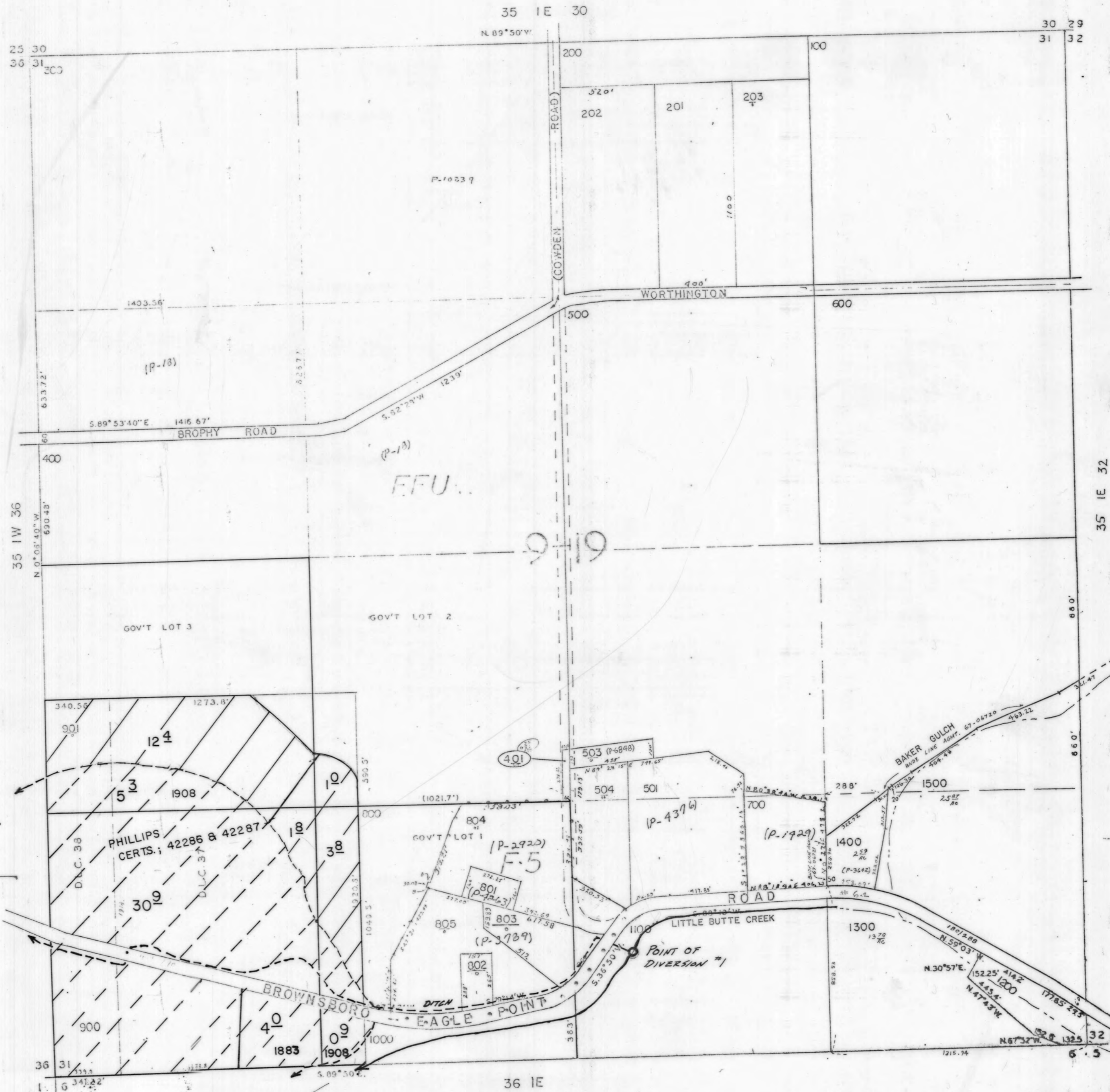
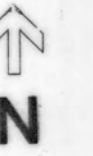


SECTION 31 T.35S. R.1E. W.M.

35 1E 31

SCALE 1" = 400'



- CERT. 55897
- CERTS. 42286, 42287.

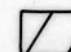

LITTLE BUTTE IRRIGATION CO.

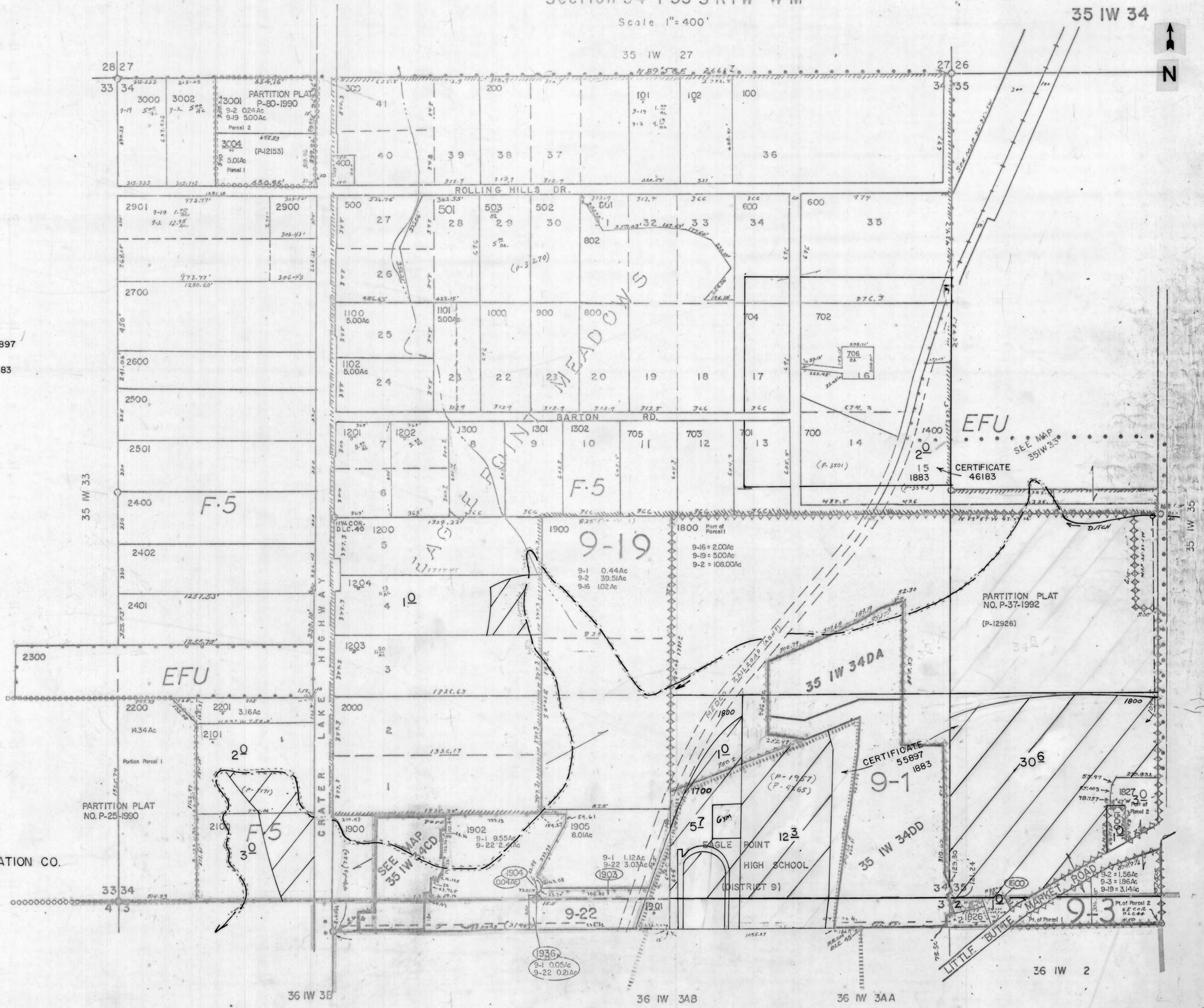
Section 34 T35 SRIW WM

Scale 1" = 400'

35 IW 34



-  CERT. 55897
-  CERT. 46183



LITTLE BUTTE IRRIGATION CO.

(30) 1 1/4
 2 1/4
 3 1/4
 4 1/4
 5 1/4
 6 1/4
 7 1/4
 8 1/4
 9 1/4
 10 1/4
 11 1/4
 12 1/4
 13 1/4
 14 1/4
 15 1/4
 16 1/4
 17 1/4
 18 1/4
 19 1/4
 20 1/4
 21 1/4
 22 1/4
 23 1/4
 24 1/4
 25 1/4
 26 1/4
 27 1/4
 28 1/4
 29 1/4
 30 1/4
 31 1/4
 32 1/4
 33 1/4
 34 1/4
 35 1/4
 36 1/4

SEC. 35 T.35S. R.1W. W.M.

35 IW 35

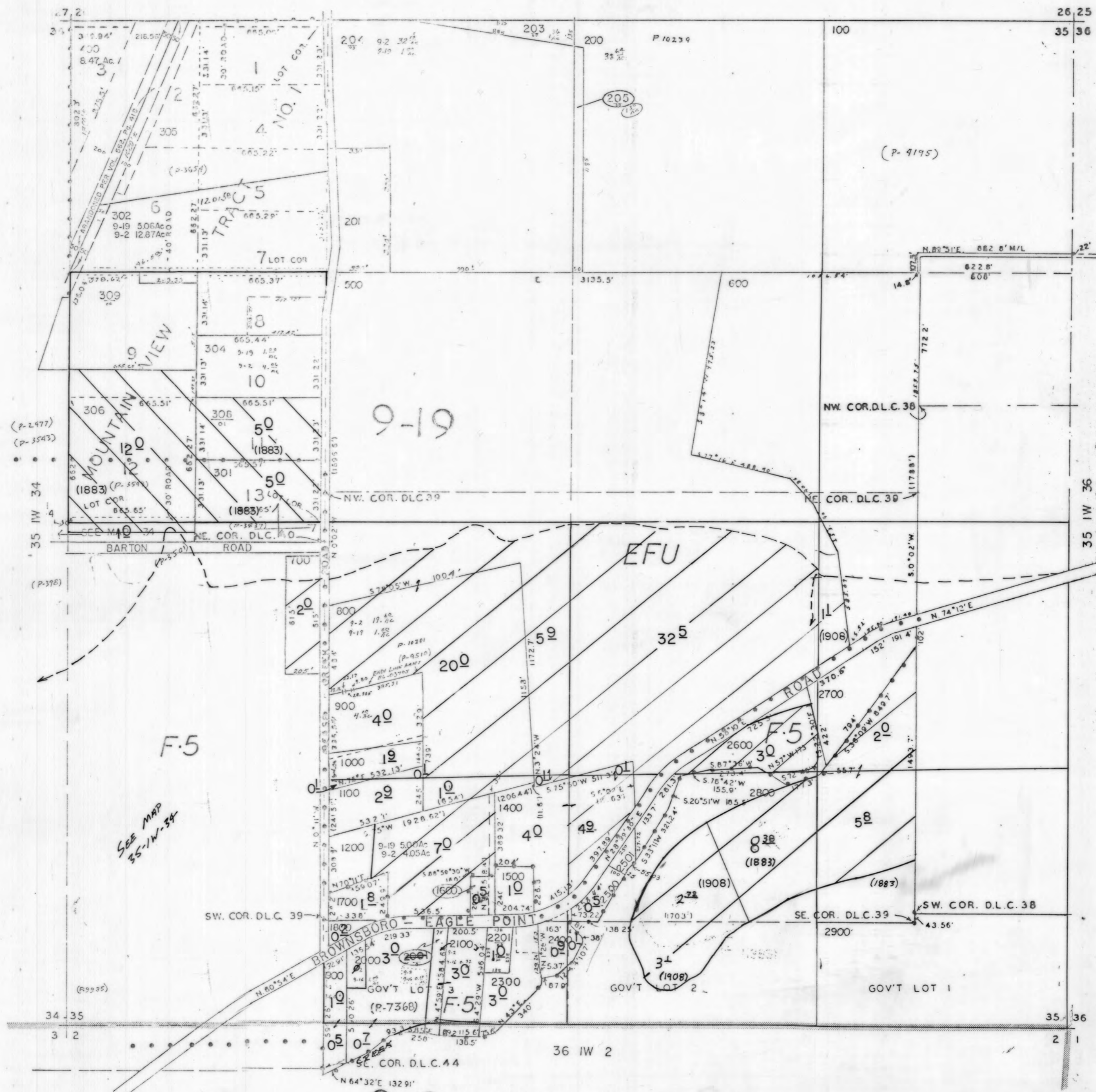
Scale 1" = 400'

1" = 400'

Scale 1" = 400'



35 IW 26



- CERT. 46183
- CERT. 55897
- CERT. 55897

ALL LANDS 1883 EXCEPT AS NOTED. ()
 ALL LANDS = DIVERSION I

LITTLE BUTTE IRRIGATION CO.

SEE MAP 35-1W-34

9-3

1-3 ADDED TO 500
1210
1211
191-N

SECTION 36 T. 35 S. R. 1 W. W.M.

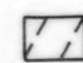

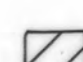
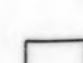
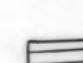
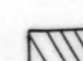
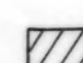
35 IW 36

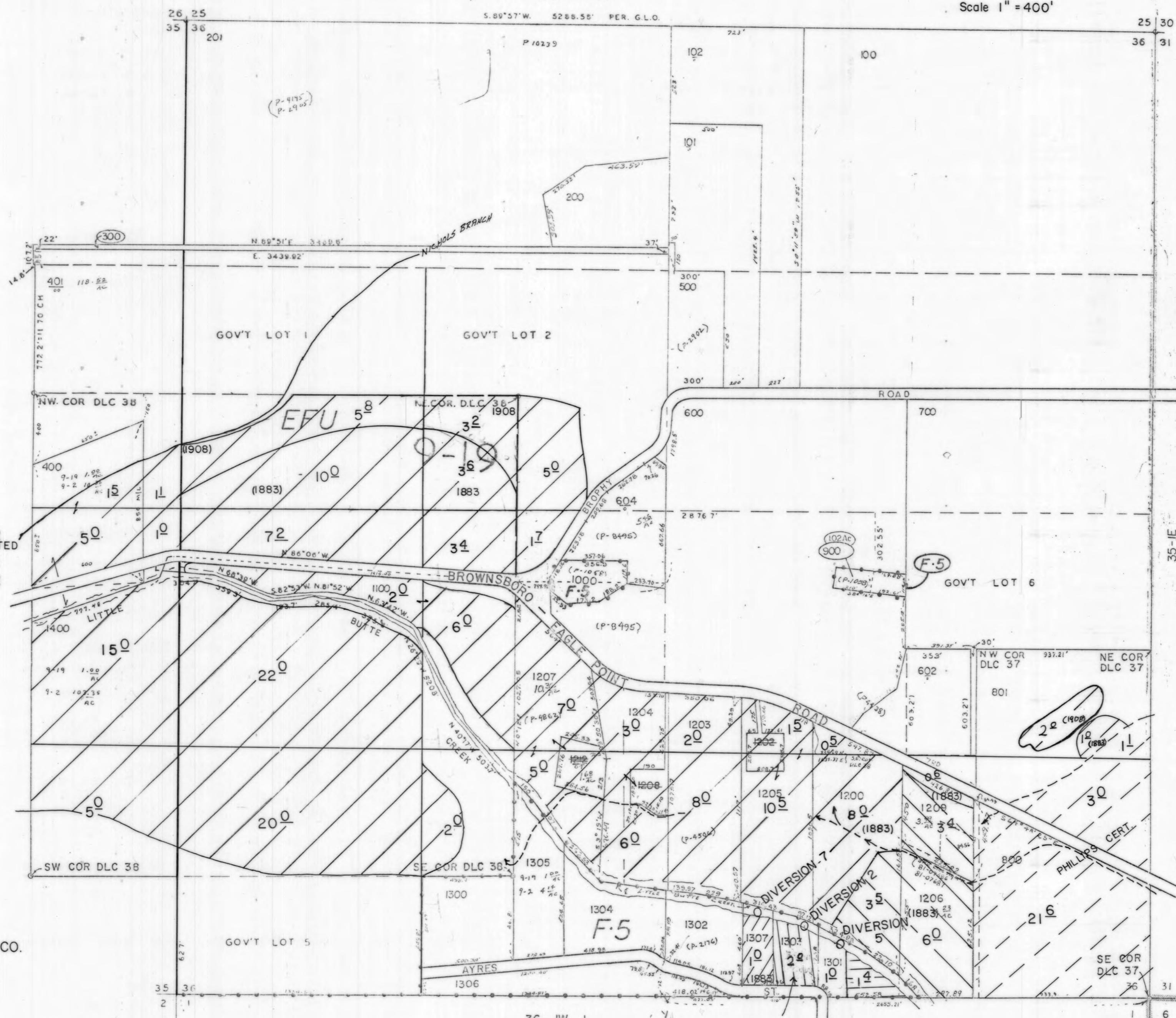
Scale 1" = 400'

35 IW 25

Scale 1" = 400'

S. 89°57'W. 5288.55' PER. G.L.O.

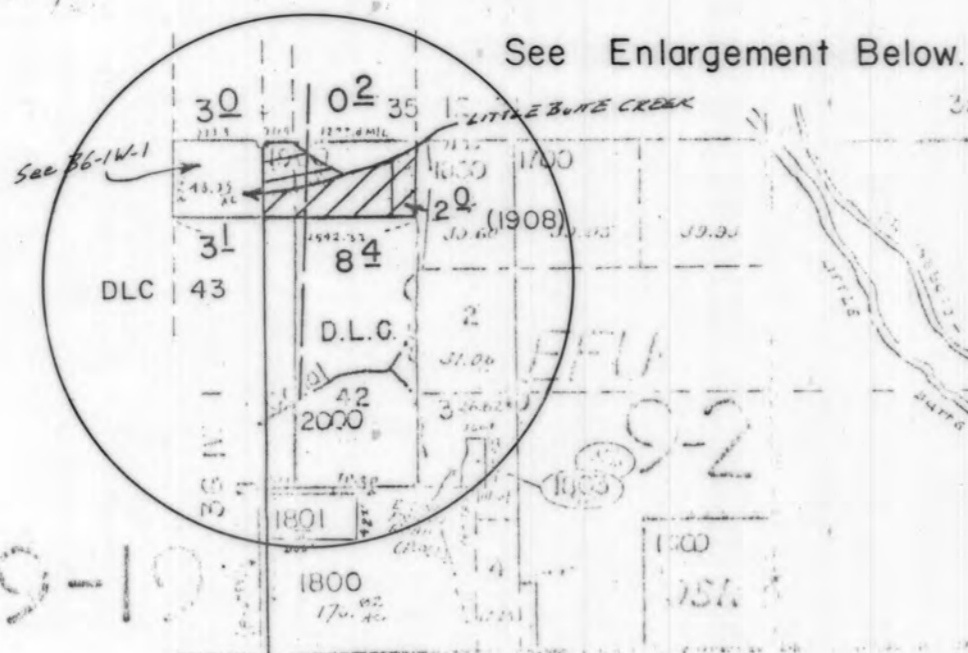
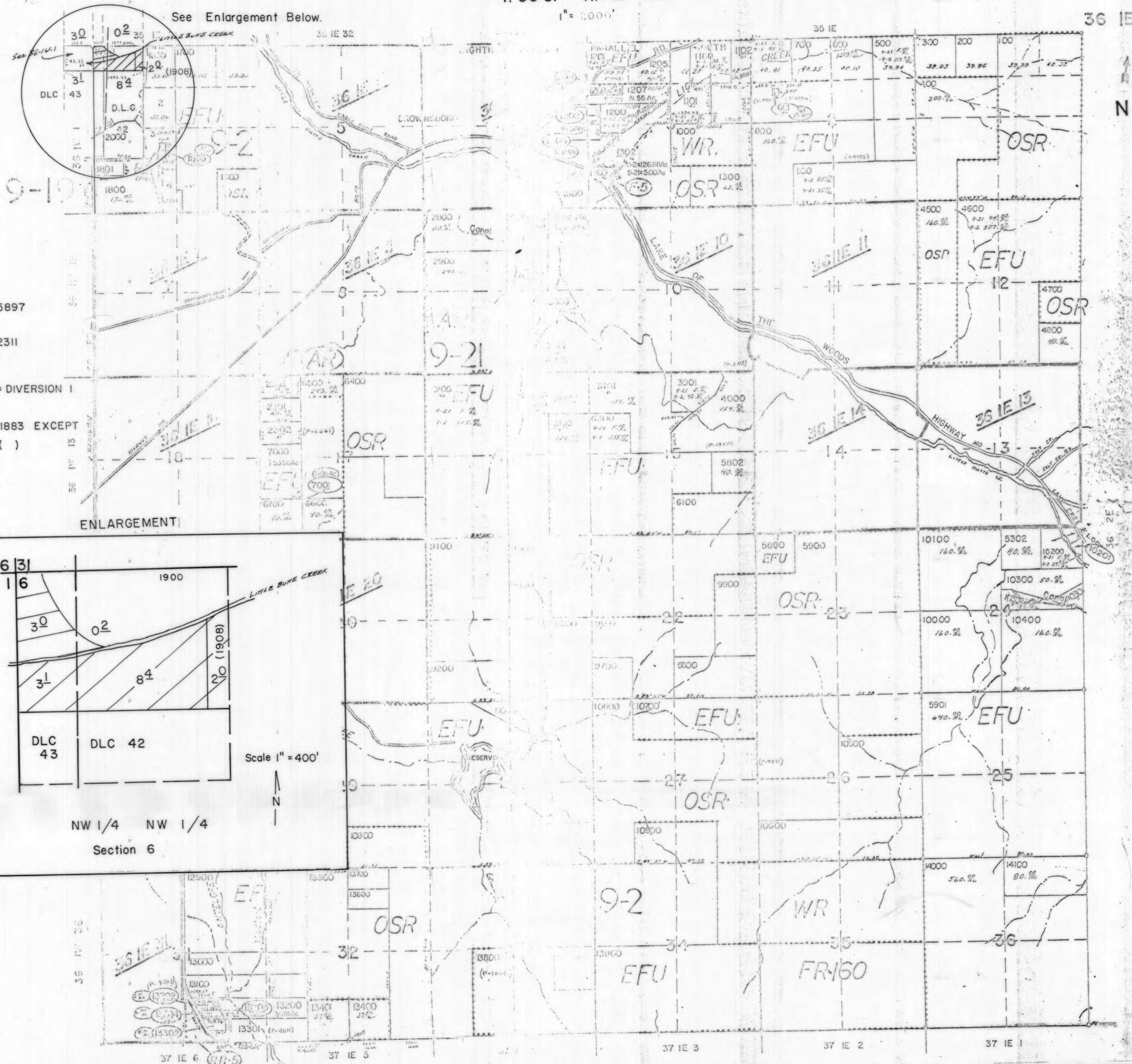
-  CERTS. 42286, 42287
-  CERT. 46183
-  CERT. 55897
-  CERT. 55897 PRIORITY NOTED
(LESS THAN 5.0 ACRES)
-  CERT. 52557
-  CERT. 37481
-  TRANSFER 5478



LITTLE BUTTE IRRIGATION CO.

1 1/2 (1908)
0 1/2 (1883)

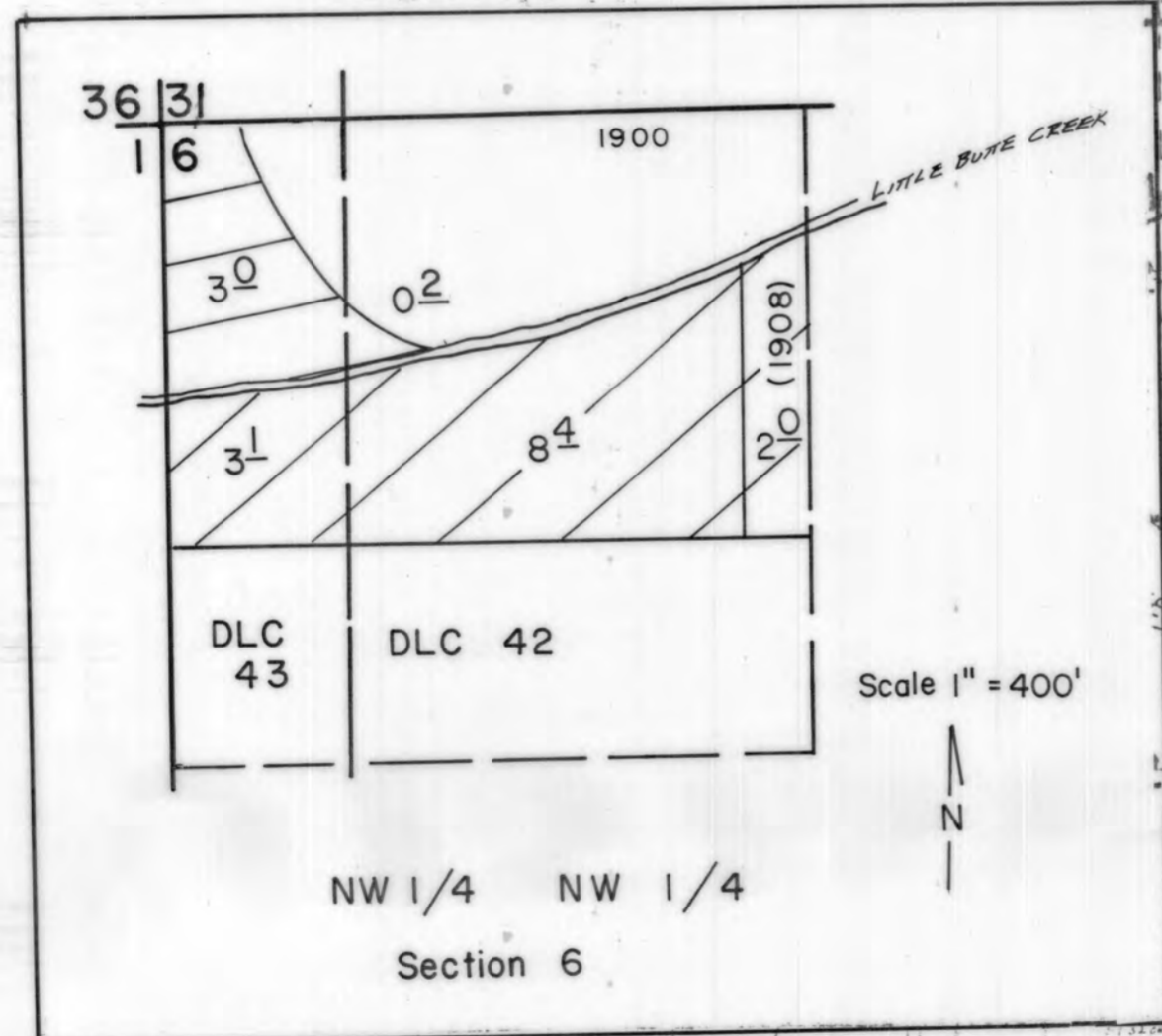




- CERT. 55897
- CERT. 62311

ALL LANDS = DIVERSION I
 ALL LANDS 1883 EXCEPT
 AS NOTED. ()

ENLARGEMENT



LITTLE BUTTE IRRIGATION COMPANY

ALL ALLEED TO 1700
1700 KILLED TO ROAD

SEC 10, TWP. 36 S., R. 1E., W. M.

SCALE, 1" = 400'

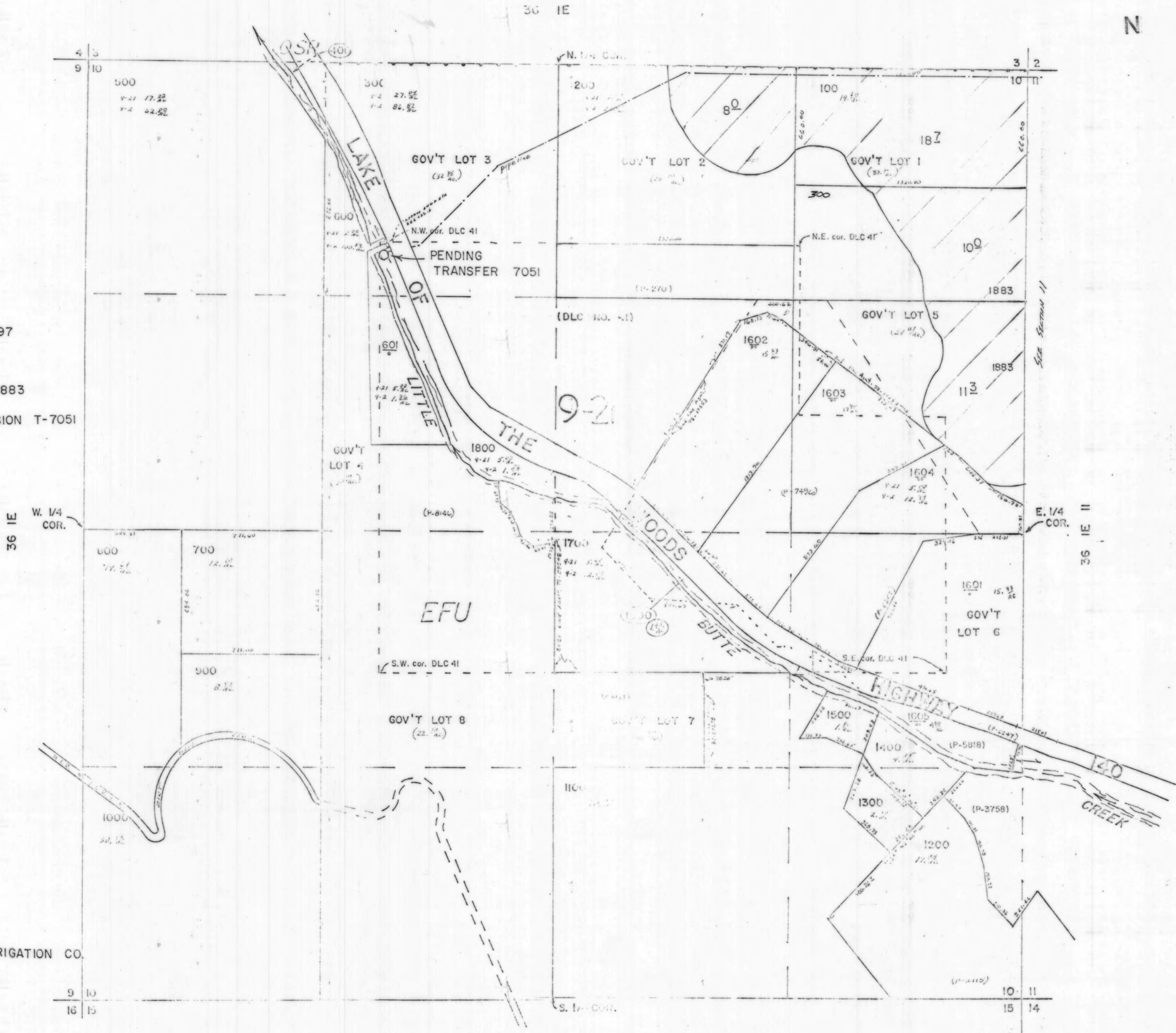
36 1E 10

A
R
N

CERT. 55897

ALL LANDS 1883

LANDS = DIVERSION T-7051



LITTLE BUTTE IRRIGATION CO.

G.M. 4/24/15

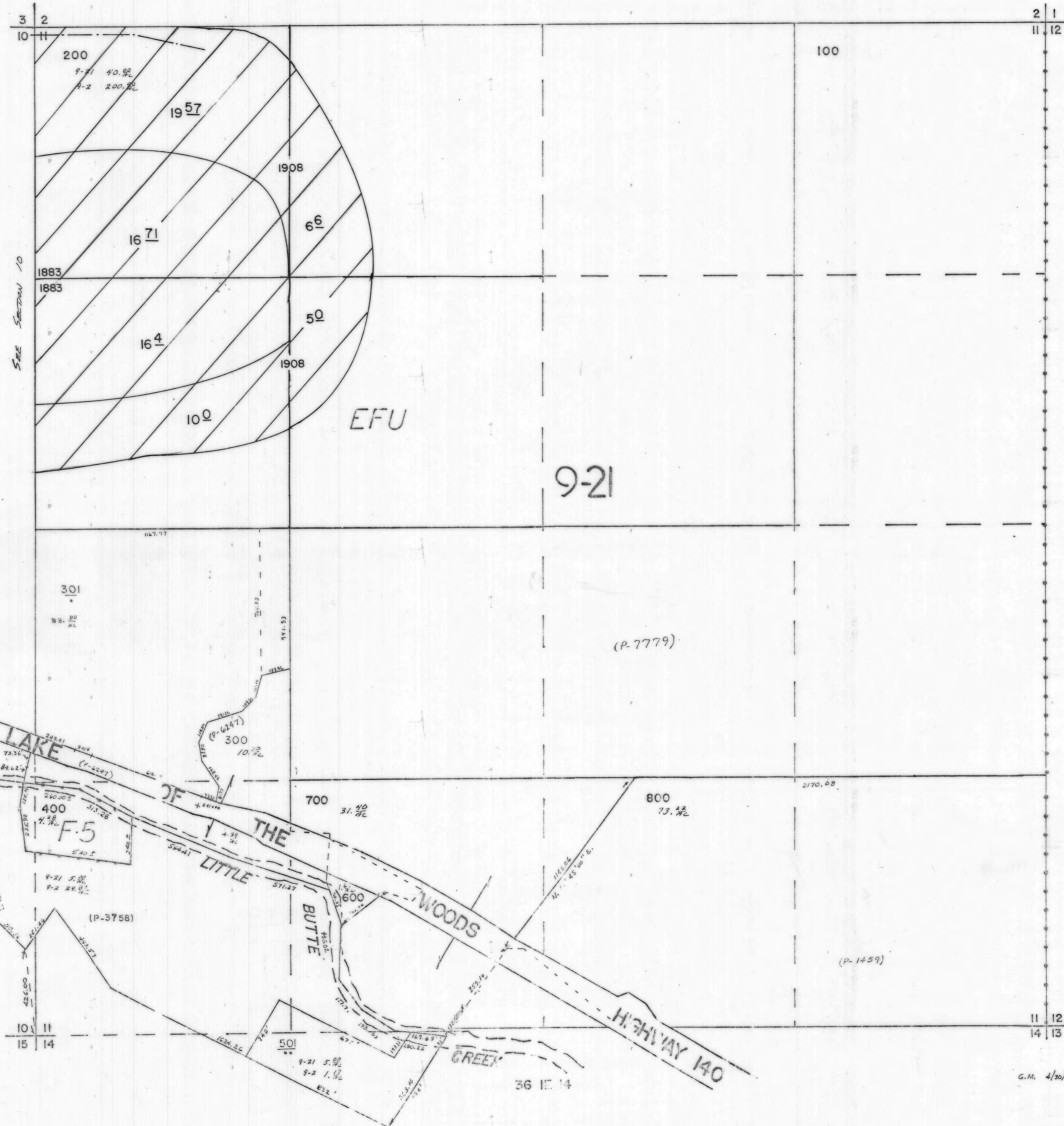
SEC. II, TWP. 36S., R. 1E., W.M.

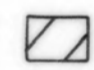

36 IE 11

SCALE, 1" = 400'



36 IE



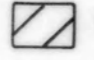

-  CERT. 55897
-  CERT. 55897
LESS THAN 50 ACRES
- LAND PRIORITY NOTED
- LAND DIVERSION = T-7051

LITTLE BUTTE IRRIGATION CO.

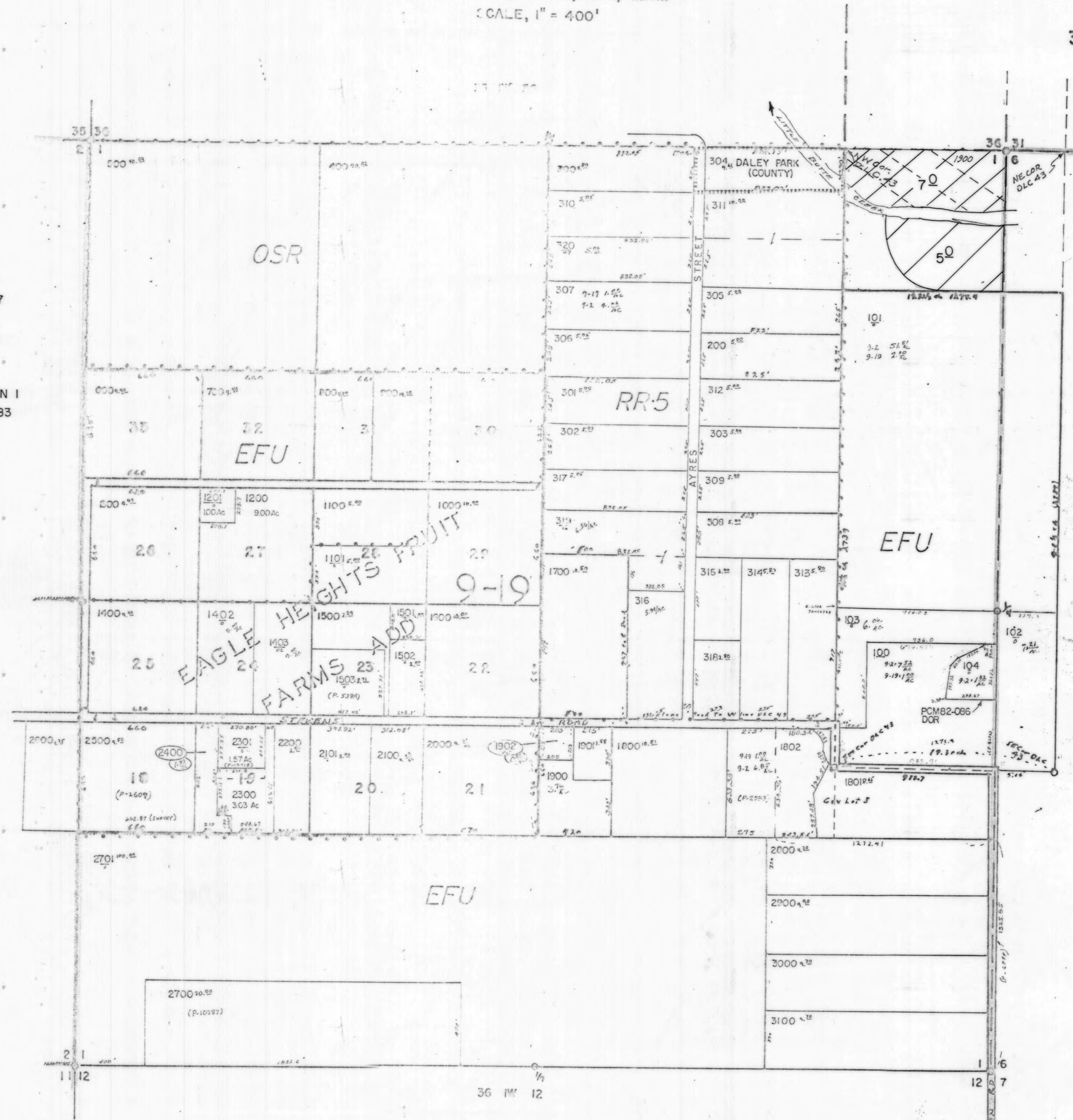
G.M. 4/30/75

SECTION 1, T.36 S., R.1W., W.1A.
SCALE, 1" = 400'

36 1W 1
N

-  CERT. 55897
-  CERT. 62311

LAND = DIVERSION I
ALL LANDS 1883



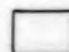
LITTLE BUTTE IRRIGATION CO.


36 1E 6

NE 1/4 NE 1/4 SECTION 3 T 36S R 1W WM

1" = 100'

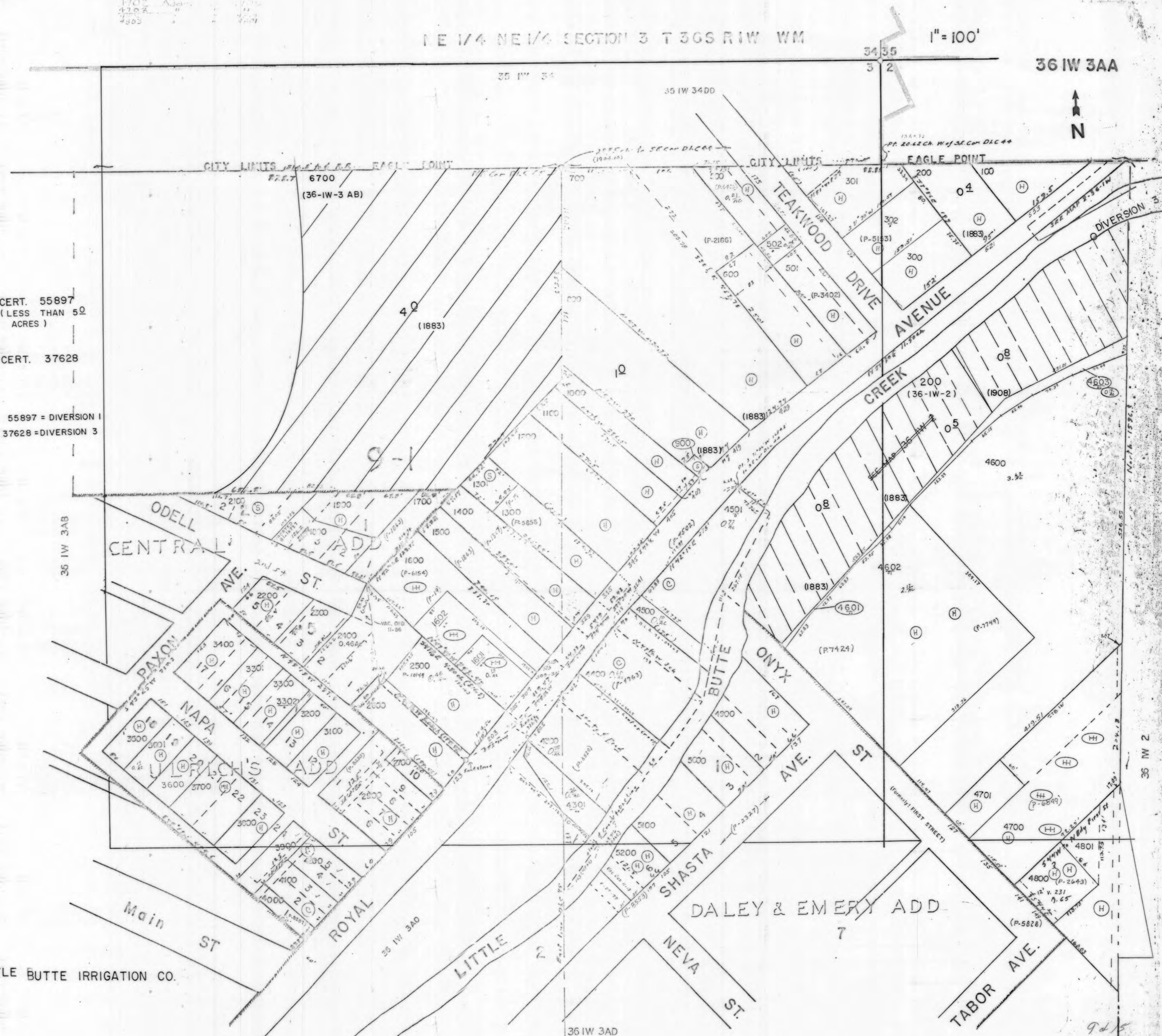
1702 Adams
4702
4803

 CERT. 55897
 (LESS THAN 50
 ACRES)

 CERT. 37628

 CERT. 55897 = DIVERSION 1
 CERT. 37628 = DIVERSION 3

LITTLE BUTTE IRRIGATION CO.



9d/5

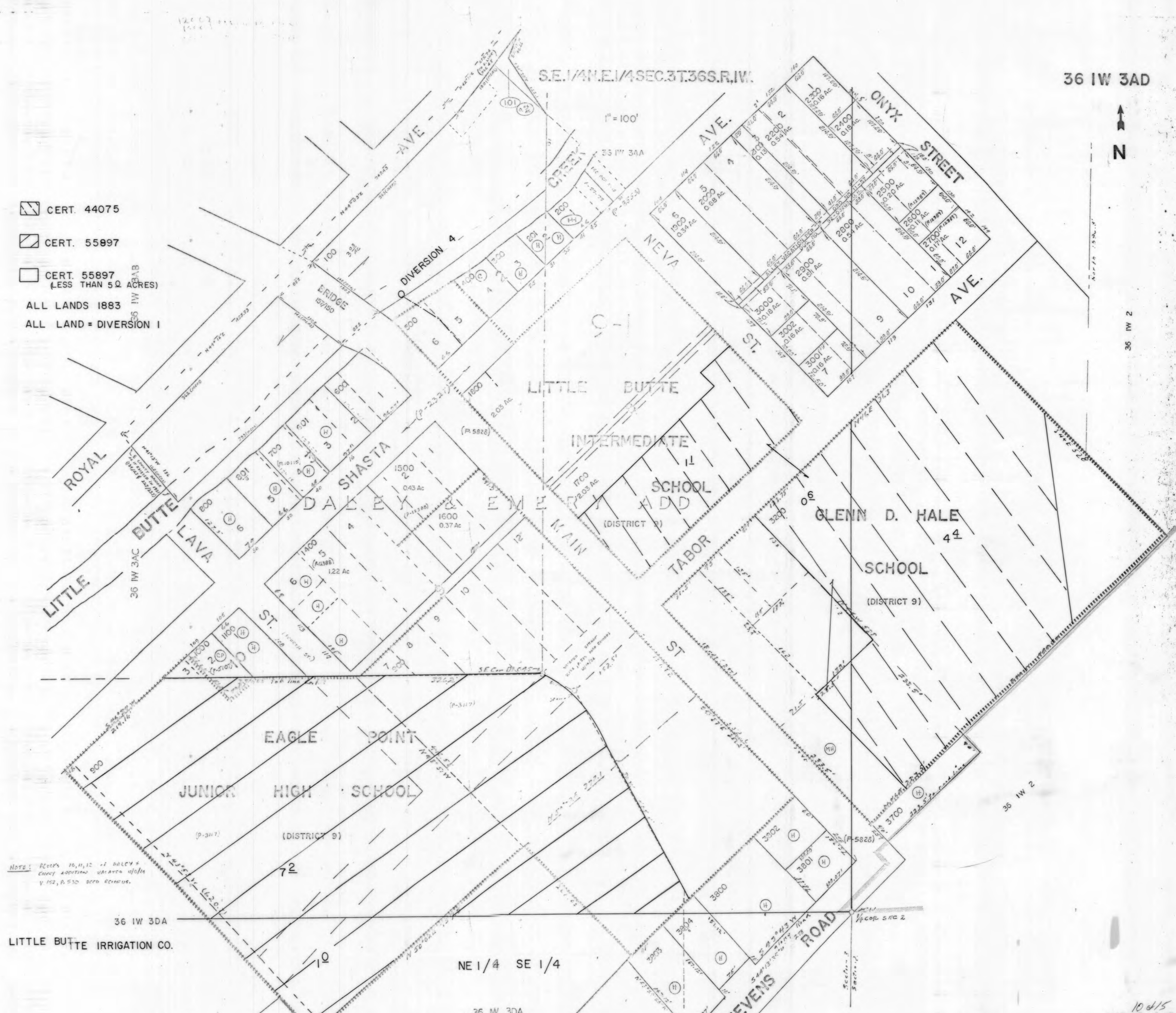
12007
1964

SE 1/4 NE 1/4 SEC. 3 T. 36 S. R. 1 W.

36 1W 3AD



-  CERT. 44075
-  CERT. 55897
-  CERT. 55897
(LESS THAN 5.0 ACRES)
- ALL LANDS 1883
- ALL LAND = DIVERSION I



NOTE: PLATS 10, 11, 12 - DALEY & EMERSON ADDITIONS UNLESS NOTED OTHERWISE, P. 530 DEED RECORDS.

LITTLE BUTTE IRRIGATION CO.

NE 1/4 SE 1/4


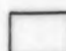
36 1W 3DA

2 MI 96

10/15

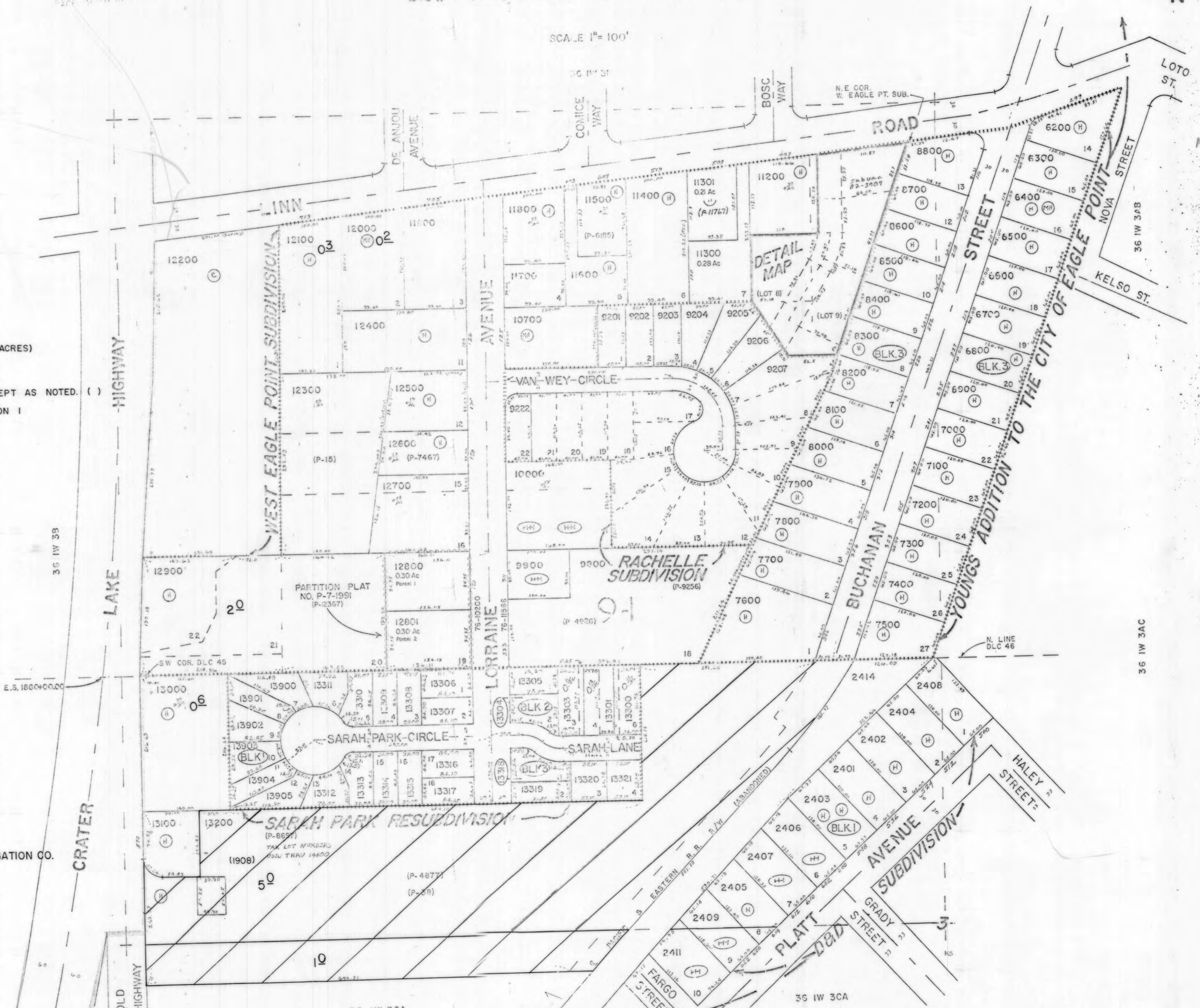


SCALE 1" = 100'

-  CERT. 55897
-  CERT. 55897 (LESS THAN 5.0 ACRES)

ALL LAND 1883 EXCEPT AS NOTED. ()
 ALL LANDS = DIVERSION I

LITTLE BUTTE IRRIGATION CO.



N.E. 1/4 S.W. 1/4 SEC. 3 TWP. 36S. R. 1W. W.M.

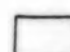
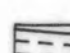
SCALE 1" = 100'

36 1W 3CA

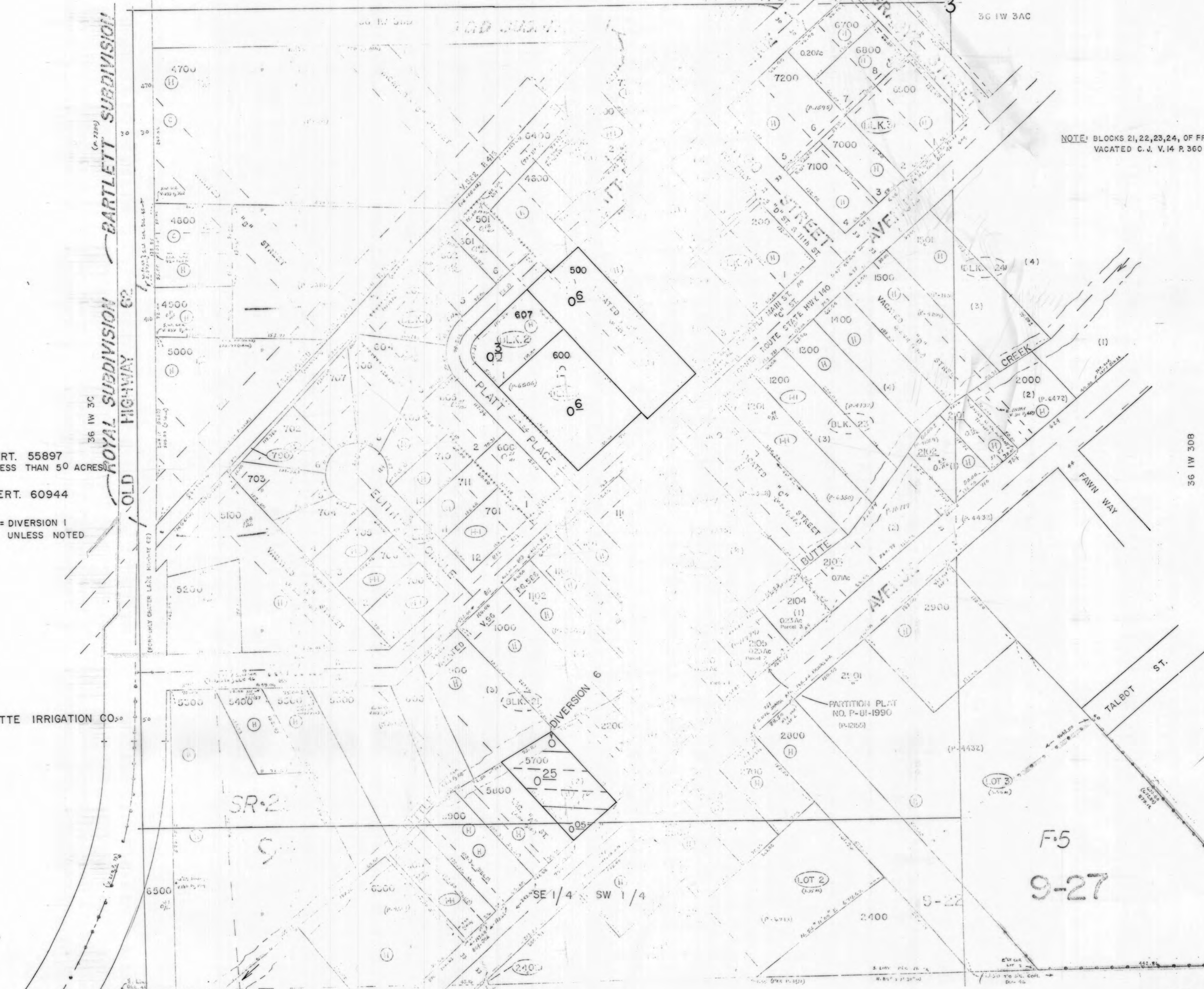


NOTE: BLOCKS 21, 22, 23, 24, OF FRYERS DIV. VACATED C. J. V. 14 P. 360




ROYAL SUBDIVISION
BARTLETT SUBDIVISION
HIGHWAY 62
OLD

-  CERT. 55897 (LESS THAN 50 ACRES)
-  CERT. 60944
- LANDS = DIVERSION 1 UNLESS NOTED

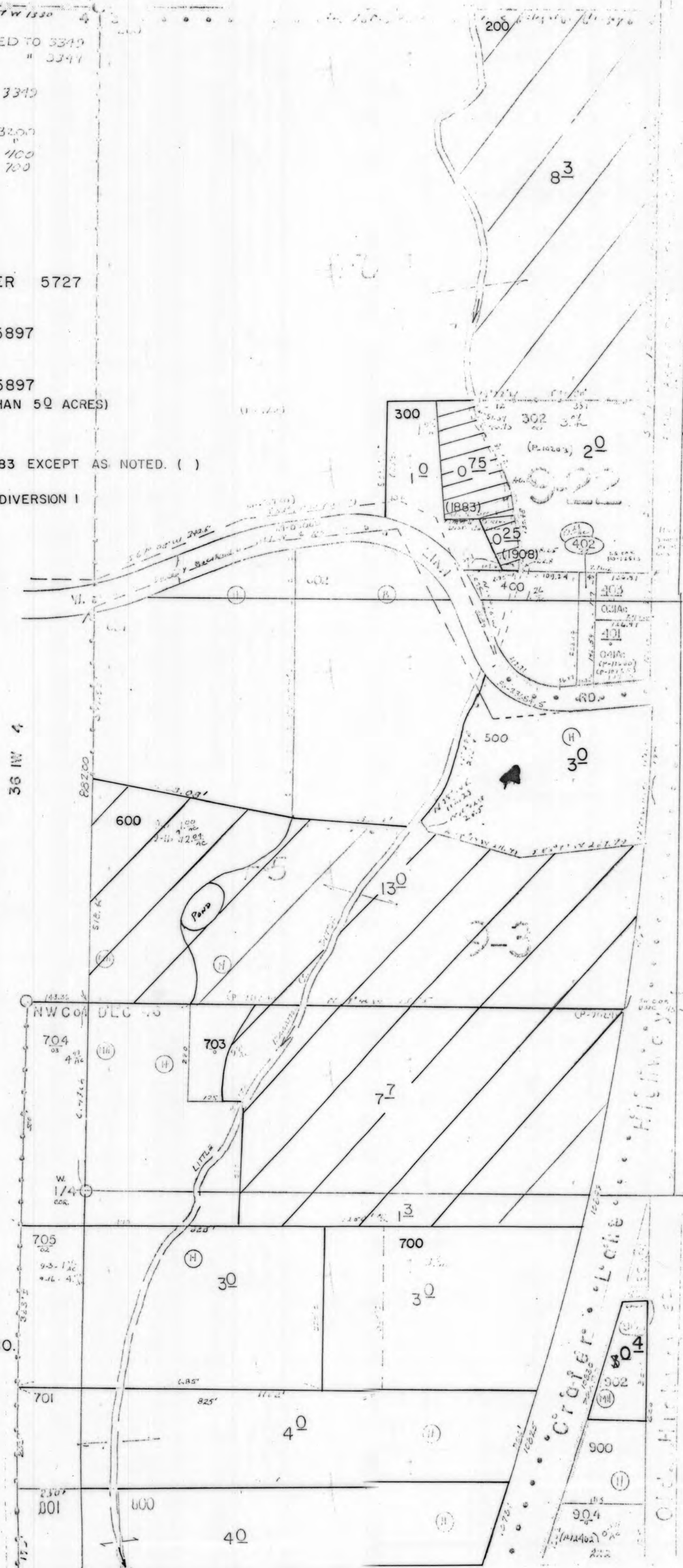
LITTLE BUTTE IRRIGATION CO.



361W 3AB-4101 ADDED TO 3349
 361W 3AB-6401 " " 3349
 3345 }
 3346 } ADDED TO 3349
 3347 }
 3348 }
 3000 " " 3000
 3101 " " 400
 301 " " 400
 702 " " 700

-  TRANSFER 5727
-  CERT. 55897
-  CERT. 55897
(LESS THAN 50 ACRES)

ALL LAND 1883 EXCEPT AS NOTED. ()
 ALL LANDS = DIVERSION I



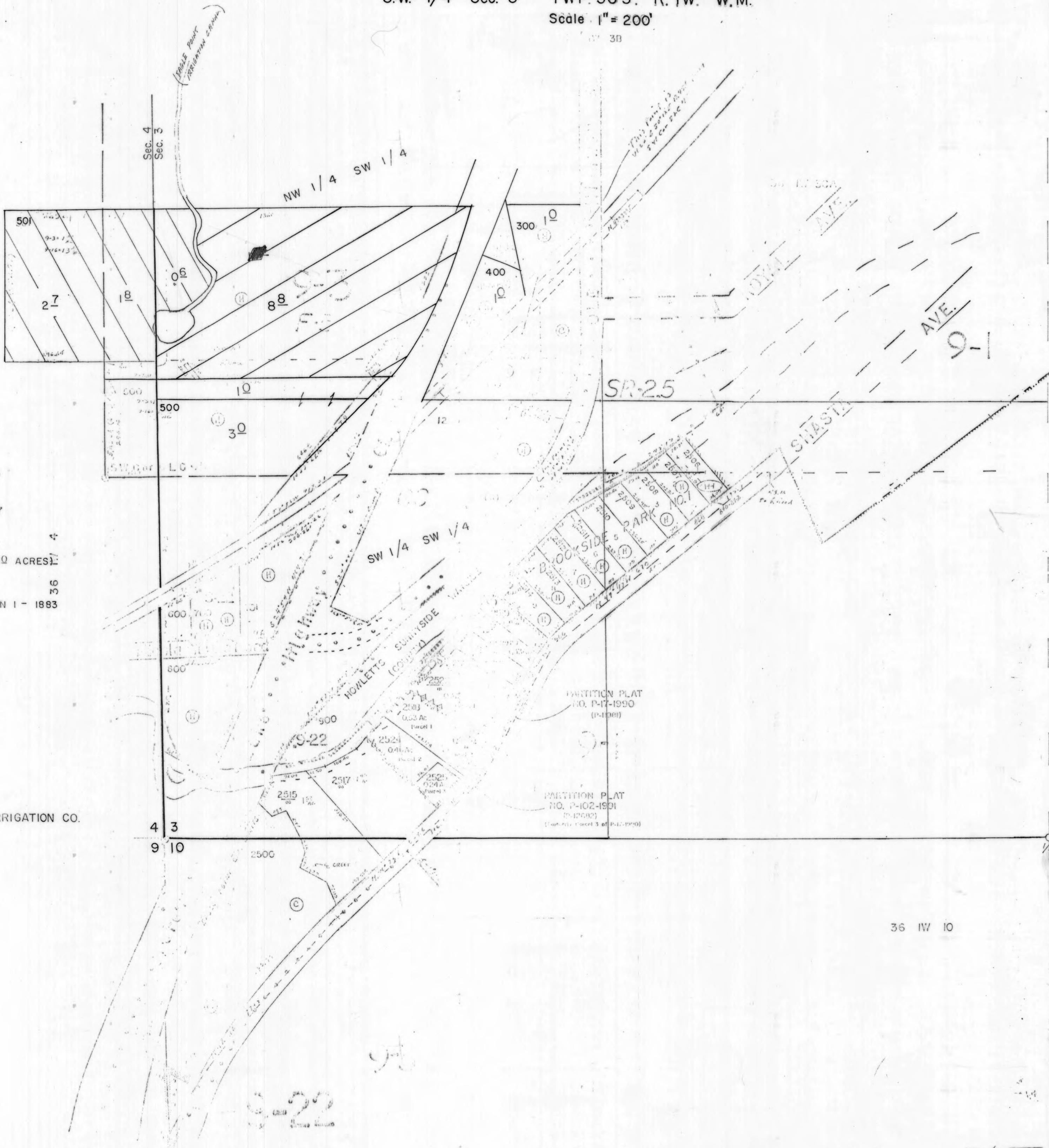
LITTLE BUTTE IRRIGATION CO.

SCALE, 1" = 200'
 35 1W 34



SE 1/4 NW 1/4

11/15



▨ CERT. 44186

▨ CERT. 55897

□ CERT. 55897
(LESS THAN 50 ACRES)

ALL LAND = DIVERSION 1 - 1883

LITTLE BUTTE IRRIGATION CO.

36 1W 10

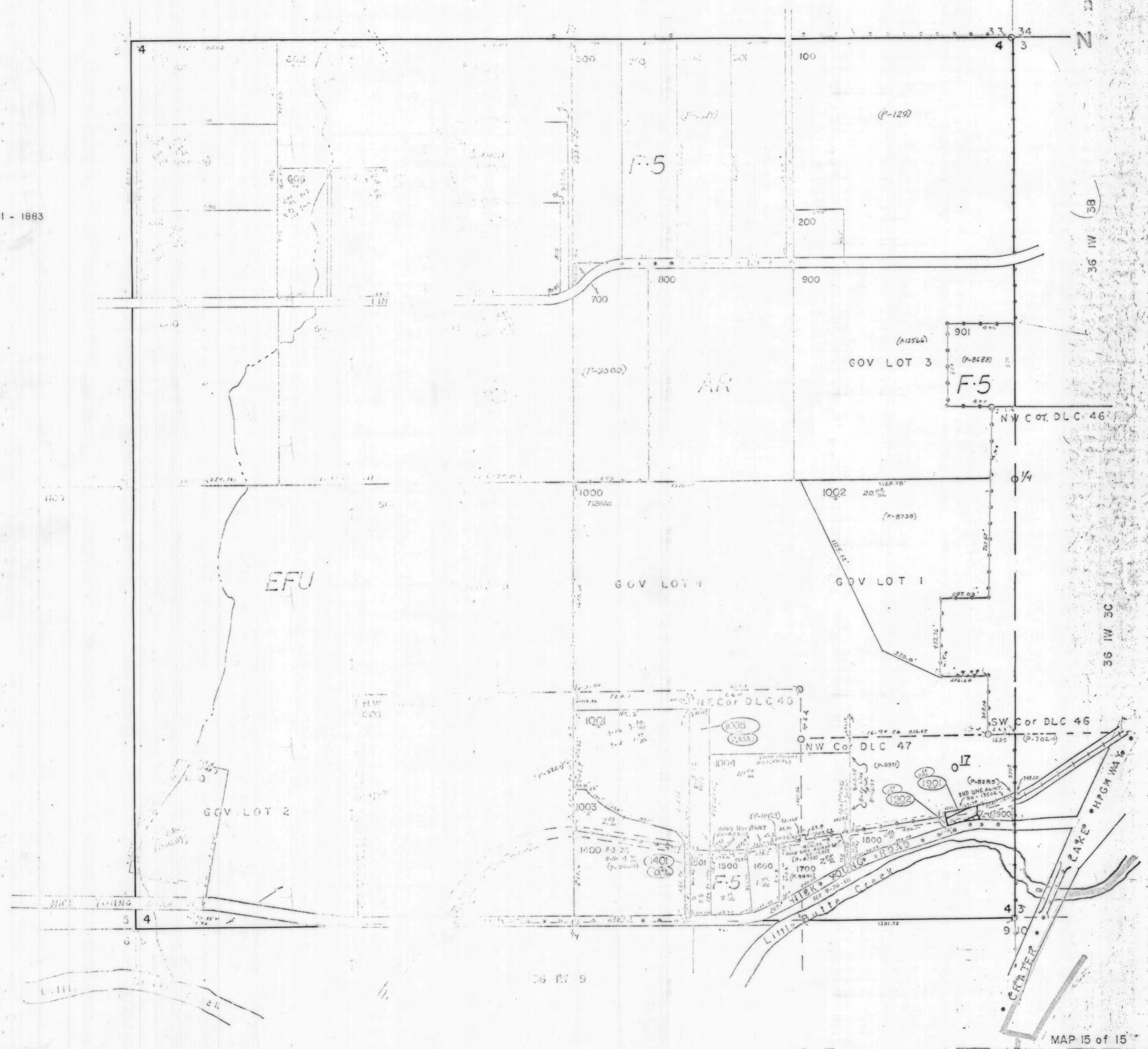
13 of 15

Section 4 T. 36 S. R. 1 W. W.M

Scale 1" = 400'

36 1W 4

CERT. 55897
LAND = DIVERSION 1 - 1863



LITTLE BUTTE IRRIGATION CO.