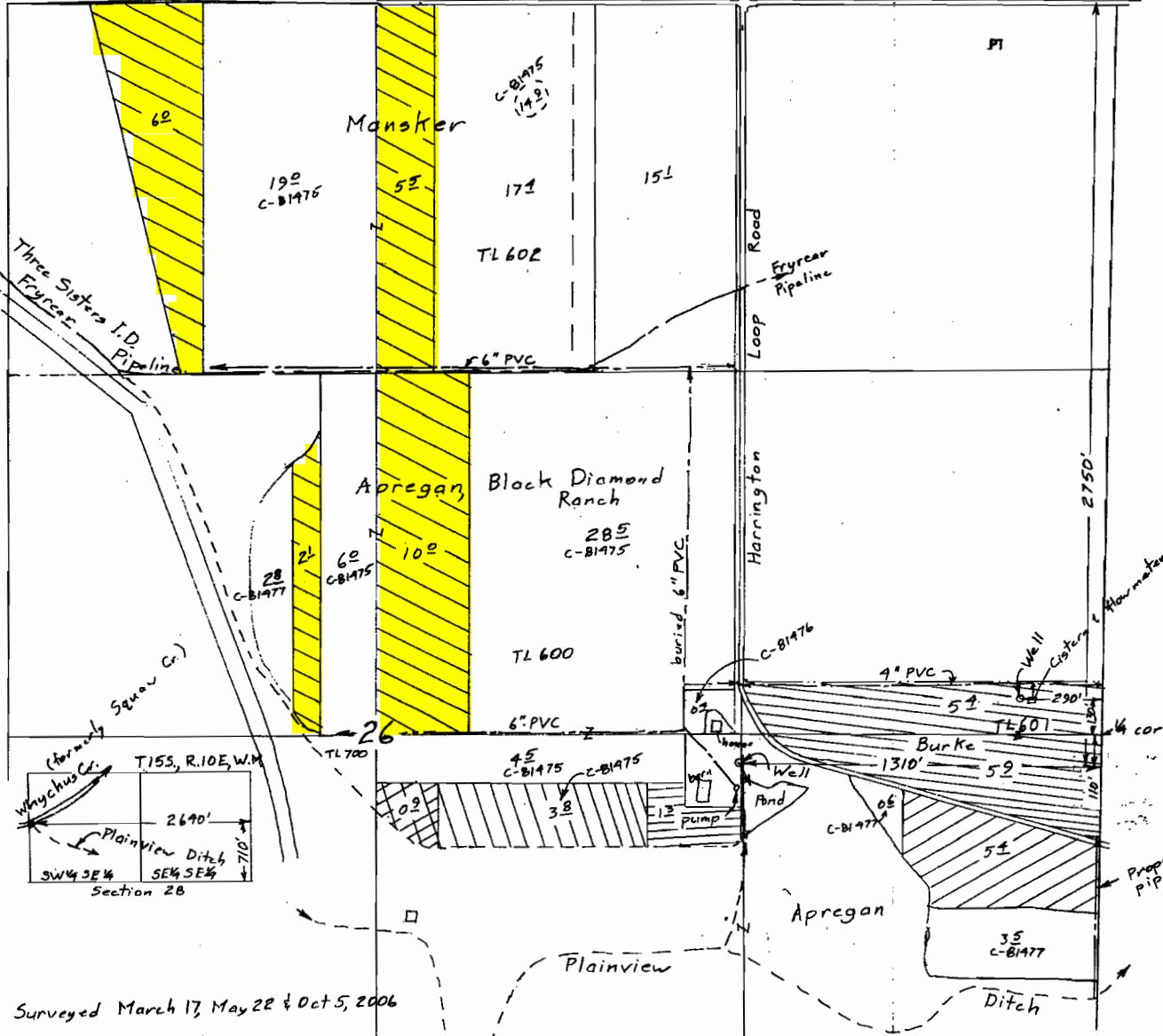


RR T-11603\_88902

TOWNSHIP 15 SOUTH, RANGE 10 EAST, W.M.



Claim of Beneficial Use Map  
for  
Craig Apregan, Mike Mansker  
and Doug & Barbara Burke

**RECEIVED**  
MAR 06 2007  
WATER RESOURCES DEPT  
SALEM, OREGON

Scale 1" = 400'

T- 9571

- Trsf Order
- ⊖ #10 (Burke) 112 acres supp to 1904
  - ⊖ #11 (Mansker) 11½ acres supp to 1895  
(Apregan) 102 acres supp to 1885  
2½ acres supp to 1895
  - ⊖ #14 (Apregan) 12 acres primary
  - ⊖ #17 (Apregan) 62 acres supp to 1904
  - ⊖ #19 (Apregan) 42 acres 1904 primary

**COMMP # 0260**



Surveyed March 17, May 22 & Oct 5, 2006

This map is for the purpose of locating a water right only and has no intent to provide legal dimensions or the location of property lines.

**ESTES SURVEYS, LLC**  
PO Box 17518      60382 Arnold Rd  
Salem, OR 97308-7510      Bend, OR 97702  
(503) 888-7383      (541) 382-7391